

SPRING

Flowering Bulbs 2025



Direct from The Netherlands

Our flower bulbs are grown and packaged on our family farms in De Zilk, the Netherlands and shipped directly to you. Guaranteeing the industry's best assortment and quality!

Fall Wholesale
Catalog

Vandenberg
Hort^{co} Inc.

Vandenberg Hort Inc.

Wholesale Bulbs • Perennials • Plants • Soils • Supplies

Vandenberg Hort Company is a wholesaler of horticultural products that supplies Greenhouses, Garden Centers, Nurseries and Landscapers. Supplying the industry with Flower Bulbs, Perennials, Fruit Plants, Started Greenhouse Plants and a wide range of Greenhouse and Nursery supplies from our 25,000 square foot warehouse facility. We are based out of Howell Michigan which is conveniently located within easy driving distance of many of the state's largest cities! We have trucks on the road all year round to make deliveries to you if minimums are met.

Family business

Vandenberg Hort Company has been a family business for five generations! Henry Vandenberg began traveling to the U.S. after the war in 1946 and in 1953 married Joanne and soon moved to the U.S. permanently to start his family and Vandenberg Hort Company in Howell, Michigan. They had two sons and two daughters. Their sons' Jack and John worked with the company throughout high school and joined the business full time in 1974 and 1975. Jack and his wife Jean have 3 children, Tim, Amy and Steve and also several grandchildren. Tim joined Vandenberg Hort Company full time in 2002 after graduating from Michigan State University, and Steve joined the company in 2009 also after graduating from MSU. John and his wife Susan have two daughters, Jennifer and Sarah and several grandchildren.

Growing company

Vandenberg Hort Company has grown and will continue to grow through sound business morals and ethics. We are dedicated to being a leading horticultural entity supplying the Great Lakes region and beyond. Vandenberg Hort Company will continue to strive to be your preferred supplier and nurture the needs of your growing company.

Contact

If you have any questions feel free to call us at 1-800-955-3813, or e-mail, sales@vandenbergbulb.com, also visit us at www.vandenberghort.com. We are looking forward to speaking with you in the near future!

Thank you
The Vandenberg Team



Kunyun (page 19)
Color-Changing



Jack Vandenberg
jackv@vandenberghort.com



John Vandenberg
johnv@vandenberghort.com



Tim Vandenberg
tim@vandenberghort.com

Meet our sales staff



Dave Tice
dave@vandenberghort.com



Dan Sparks-Jackson
dan@vandenberghort.com



Ryan Stehouwer
ryan@vandenberghort.com



Welcome!

To order bulbs

You may submit orders by phone, e-mail, your regional sales representative or online at www.adrbulbs.com. Please note that we are wholesale only and do not sell to the public.

Order deadline and availability

All orders received by us before July 15th will be shipped directly from Holland, with delivery beginning in early September. After this date, all orders are subject to availability. We carry approximately 75% of our program in stock at our Chester, New York warehouse each fall. If you have any questions or need a quotation for bulb varieties that are not listed, please contact us! It will be our pleasure to help you.

Customers in Canada

We ship directly to you from our farm in Holland. Due to difficulties in shipping from the USA to Canada, we are not able to supply you from our NY warehouse. Please contact us at info@ruigrokflowerbulbs.com for availability and shipping options to Canada.

Fall shipping in the USA

Bulb orders placed pre-deadline begin shipping in early September. Orders placed after the deadline begin shipping in mid-late September.

Guarantee

We 100% guarantee our bulbs to be viable, healthy and free from injurious insects and disease upon receipt. We guarantee that all of our bulbs are grown from cultivated stock (never harvested from the wild). All of our bulbs are inspected by United States, Canadian and Dutch Departments of Agriculture. We give no warranty to viability of our product after 10 days after receipt. We cannot guarantee survival of product after this time due to factors that are beyond our control, such as improper storage or planting, extreme weather or poor soil.

Bulb Treatment

Our bulbs are not treated with neonicotinoides. Pesticide use is heavily regulated in the Netherlands and extensive research has been done on this topic. A copy of the results from this study from the Royal Dutch Trade Association for Flowerbulbs and Nursery stock can be found on our website.



Terms and conditions

A full copy of our terms and conditions of sale and freight schedule can be found on our website or the enclosed order form.

Index page

About Us	2-3
Our Clientele	4-5
Planting and Care	6
Packaging	7
Program Overview	107

Main Program

Tulips	8-41
Tulip Mixtures	42-53
Daffodil Mixtures	54-57
Daffodils	58-70
Bulk Paperwhites	71
Hyacinths	72-73
Crocus	74-75
Muscari	76-77
Alliums	78-82
Specialty Bulbs	83-86
Bulk Specialties	87
Bearded Iris	88-89

Retail Collections

Store Collection NEW!	90
XL Bulbs	91
Value Packs	92-94
Jumbo Landscape Bags	95

Amaryllis

Dutch Amaryllis	96-101
Peruvian Amaryllis	102-103
Waxed Amaryllis NEW!	104-105
Counter Collection and Amaryllis kits	106

Ruigrok Flowerbulbs

Since 1910

We are proud to present our NEW Fall Bulb Wholesale Catalog! With 107 pages, 450 varieties and 88 new introductions, this year's edition features our most extensive assortment ever!

Most of our bulbs are grown, packed and shipped by our family farm (Ruigrok Flowerbulbs), located in the heart of the Dutch bulb district in De Zilk, the Netherlands.

We farm over 300 acres of tulips, hyacinths, daffodils and crocus annually, and keep the entire production process in house. For 113 years, generations of our family have gained expertise in all facets of the flower bulb industry, and we maintain close relationships with many top growers around the world today.

Flower bulbs are not just our livelihood, they are our family passion. We still live in the farm complex, and delight in walking the famed tulip fields of the Dutch Bollenstreek (Bulb District) each spring along with millions of visitors from around the world.

In 2021, our youngest daughter Romy created The Tulip Barn show garden in the neighboring town of Hillegom. Last spring, 40,000 visitors to the bulb district visited us to enjoy millions of tulips in bloom, and take that perfect picture amongst our actual production fields! The Tulip Barn serves a dual purpose as a gigantic test garden for new varieties and bulb blends. Each mixture that you find in our catalog has been carefully trialed, tested and showcased at The Tulip Barn to ensure stunning results for you and your clients.

We hope you enjoy our new catalog, and gain the same joy from these beautiful blooms each spring that we do!

With love from the Netherlands,

The Ruigrok Family





High quality flower bulbs,
grown on our family farm!

Our business is bulbs

Bulbs for Retail

We specialize in retail packaging for independent garden centers

Elevate your retail offerings and differentiate your program from big box competition. Our retail packaging features only top-size bulbs, ensuring superior quality and performance. With clean, colorful and unique packaging, you can captivate your customers and create a distinct identity. Unlike other bulb suppliers, we prioritize independent garden centers, florists and hardware stores throughout the USA and Canada. We do not sell to big box stores. Customize your program to your specifications by ordering individual varieties in small minimums, or select our best seller display. Partner with us to enhance your retail flower bulb selection, and delight your customers with exceptional bulbs that produce superior blooms!



Bulbs for Landscape

Landscape supply is the core of our business



We have supplied premium Dutch bulbs to landscape professionals in the USA and Canada for nearly 80 years. Our high-quality bulbs are the preferred choice of thousands of botanical gardens, cemeteries, golf courses, landscape professionals, municipalities, parks, universities & u-pick farms each fall. Enhance your landscape projects with the industry's best bulbs, and create stunning spring displays. Our US warehouse carries the largest, most comprehensive inventory of spring bulbs in the industry!

We have the flower bulb selection for every business



Bulbs for Growers

Let us help you compose your spring program

Greenhouse and cut flower growers alike favor our giant assortment! Our goal is to develop long-term relationships with our customers. Let our experienced sales force guide you through the process of forcing flower bulbs for cut flowers or pots. We will gladly assist in choosing the optimal varieties for Valentine's, Easter or Mother's Day. Pre-cooling services are available.

Bulbs for U-Pick Farms

Let your U-pick business grow by adding an extra (spring) season

People of all ages are showing greater interest in nature, gardening and outdoor activities and agritourism is a fast-growing market for flower bulbs. Many farms around the world (including us, at our very own *Tulip Barn!*) are creating u-pick festivals in the spring centered around tulips. As we are bulb growers and u-pick operators ourselves, we can advise you on the best varieties and planting techniques; we even supply specialized bulb planting machines direct from manufacturers in the Netherlands.



FLOWER BULB PLANTING AND CARE

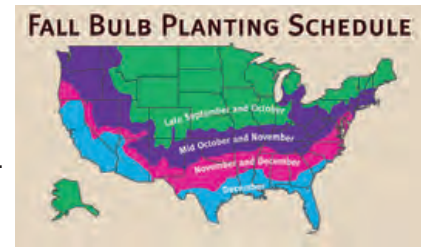
Landscaping with flower bulbs

1. Recommended planting time

Soil temperatures must be 55 F or below to ensure proper root development before winter sets in. Spring Flowering Bulbs must be planted in the Fall. You can continue planting as long as you can get in the ground, but ideally around the time of your first frost, and not later than the onset of winter.

In warmer climates (zones 7b-10), spring bulbs need to be pre-cooled for 8-10 weeks to ensure proper root development and to avoid stunted blooms. We offer complementary pre-cooling to USA customers at our New York warehouse by request only. Please note that pre-cooled bulbs must be planted immediately upon receipt and are unlikely to return the following year.

Always store bulbs in a cool, dark, dry, well ventilated place. Bulbs can tolerate temperatures between 35 and 75 degrees F.



Late September - October: Zones 4 and 5.

Mid October - November: Zones 6 and 7.

November - December: Zones 8 and 9.

December: Zone 10

2. Soil conditions

Good drainage and plenty of sunlight are critical. Never plant bulbs where water pools, all bulbs are harmed by "wet feet". If you have heavy clay soil, loosen to 10" deep before planting, and add topsoil, compost or peat to lighten the soil. Water thoroughly after planting. For optimal results, apply a slow release nitrogen-phosphorus-potassium fertilizer (10-10-10 or 3-5-3). We like Espoma Organic Bulb Tone. Ideal timing: Early Spring when the first shoots push thru the soil and/or after flowering. Early bloomers can be planted under trees where they will get enough sunlight prior to leaves regrowing. If the same type of bulb is planted in a bed year after year, Rhizoctonia may develop. We prevent this on our farm with crop rotation.

5. Prolong the flowering period by mixing bulb types

An informal effect will be achieved by combining bulbs with different flowering times. This can be different types of tulips, like our mixed and solid colors on pages 46-53, or our long-lasting daffodil mixes which can be found on pages 54-57. Combining tulips and daffodils with hyacinths and smaller bulbs will make a perfect and long-lasting spring display. As the options are endless and a matter of personal taste, we do not offer any standard mixes with multiple bulb types. If you need any assistance or advice on mixing bulbs, just let us know, we are ready to help!

9. Bulbs in flower containers

Flower containers are being used more and more to upgrade the appearance of urban areas and access roads. Bulbs can play an important role in container planting, as the flowering can start as early as February with crocus. Plant bulbs in layers (the bulbs flowering last are planted at the lowest level) or work with removable inner containers. The flowers can be replaced when their blooming period is finished. Especially in the winter period, too much water is dangerous to the bulbs. Therefore we advise to place the containers on blocks, so that the water can freely flow away. Use a layer of clay granules at the bottom and add a layer of compost between the bulb layers. We advise to choose shorter flowering bulb types as they are less susceptible to wind damage.

3. Planting depth and distance

The general rule of thumb is to plant bulbs at a depth of double the height of the bulb. Although not necessary as most bulbs will adjust on their own, it is good practice to plant bulbs in an upright position. Small bulbs can be scattered. The spacing of the bulbs depends on the visual effect you are looking for. When planting mixtures with sequential bloom times, make sure to plant them closer together than you would a single variety.

6. Perennializing

Many bulbs will perennialize if properly handled. It is vitally important for foliage to be allowed to die back (especially with daffodils). The browning, unsightly foliage you will see is an important part of the process. Do not cut back until the the foliage has finished dying back and lies limp on the ground (6-8 weeks). Foliage that is mowed/trimmed/tied does not allow the bulbs ample time to re-absorb nutrients, and in turn they will not have sufficient energy to bloom the following Spring.

7. Bulbs in lawns and grass strips

The earliest flowering bulb types are the best choice for planting under grass, as the bulb foliage has to be allowed to die down before mowing. Some bulbs like Chionodoxa, Scilla or Puschkinia depend upon seeds for propagation. These seeds take about 6 -8 weeks after flowering before they are ripe. When the seeds fall from the plants, the mowing can start. Here are some suggestions: chionodoxa lucilliae, crocus species and large flowering, fritillaria meleagris, all daffodils, leucojum aestivum and scilla siberica.

4. Choosing the right combination of bulbs

For the right choice of spring bulbs it is important to decide first which effect is desired. Bulbs can be grown in many ways, from formal to meadow gardens, scattered in lawns, under trees or strategically planted in beds or perennial borders. In a successful bulb combination, not only the colors but also the flower shapes are balanced. A classic bulb planting consists of at least 6 bulbs (tulips, daffodils, hyacinths) per square foot. When mixing tulips with perennials this can be 3-4 bulbs. Hyacinths are often applied in classic flower beds. All varieties have more or less the same height, which gives a peaceful effect. Tulips and daffodils combine very well because of their shapes and colors. The more natural looking daffodils in soft tones with the "royal" tulips in every possible color.

8. Mass plantings of bulbs in beds and borders

To enjoy perennial and rose borders earlier in the season, spring flowering bulbs can be added. As a bonus, the perennials will later hide the withering leaves of the bulbs. Large plantings of hyacinths, daffodils and tulips add a beautiful multi-color effect to the border. Tulips make a lovely combination with wallflowers, pansies, and forget-me-nots.

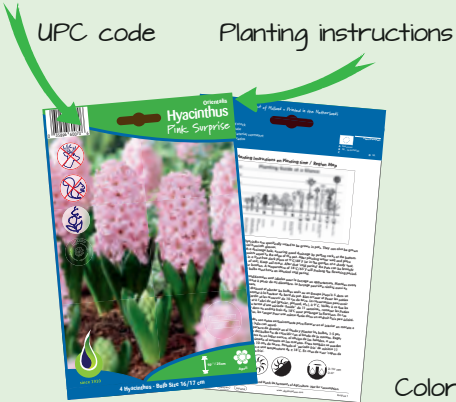


A COMPREHENSIVE BULB PROGRAM TO FIT YOUR NEEDS!

We have packaging suited to the needs of a wide array of clients including botanical gardens, cemeteries, cut flower growers, e-commerce, golf courses, greenhouses, independent garden centers, landscape professionals, municipalities, parks, re-wholesalers, universities & u-pick farms.

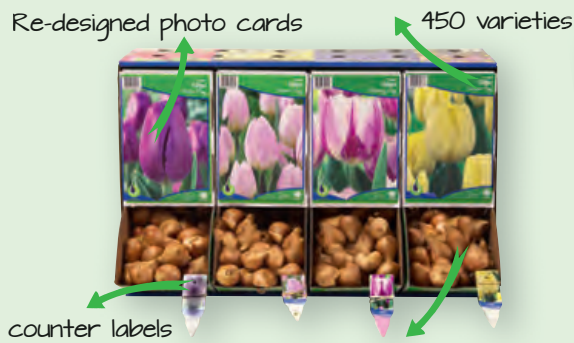
Retail Packages

Many of our 450 varieties are available in retail packaging (where indicated). These varieties can be ordered individually in small minimums, allowing you to customize your own bulb display. For customers that prefer a ready-made solution, our new retail store collection includes our 40 best sellers in a re-usable wooden display. UPC codes appear on the front of each package.



Bin Display Boxes

Our versatile bin boxes are popular with both independent garden centers and landscape professionals. Colorful plant ID tags are included with each box. Consumers can hand-pick their own bulbs, and tear of a tag as they go. All bulbs are divided into 6 suggested price groups that correspond with the color of the plant ID tag, and suggested retail pricing is included with each shipment. UPC codes appear on the front of each box, and back of each tag. Choose from



pages
8-86

Value Packs

Our value packs allow an independent garden center to compete with their big box neighbors by delivering top size bulbs at a competitive price point. Each variety is packed with an individual picture card, UPC code and full color poster affixed to the front of the display carton.

pages
92-94



Bulk Trays

Ideally suited for landscape use and mass plantings, all varieties are available in bulk trays at discounted pricing. A colorful picture ID card is included with each tray.

Jumbo Landscape Bags

Popular with both homeowners and landscape professionals, these items feature 50 bulbs per netton bag, available in a wooden pallet display or as container refills of 8 Jumbo bags per unit.

pages
95



TULIPS



Emperor

Early Spring

Bulb Size

12/+ cm

Retail Packages

10 bulbs per bag

Bin Display

100 bulbs per box

Bulk

500 bulbs per tray

Emperor (Fosteriana) tulips are identified by their large, oval flowers on sturdy, medium height stems. Emperor blooms are long-lasting, and amongst the earliest varieties to flower. A perfect choice for beds, borders, containers and the landscape. Pair well with early blooming daffodils.



Flaming Emperor & Exotic Emperor



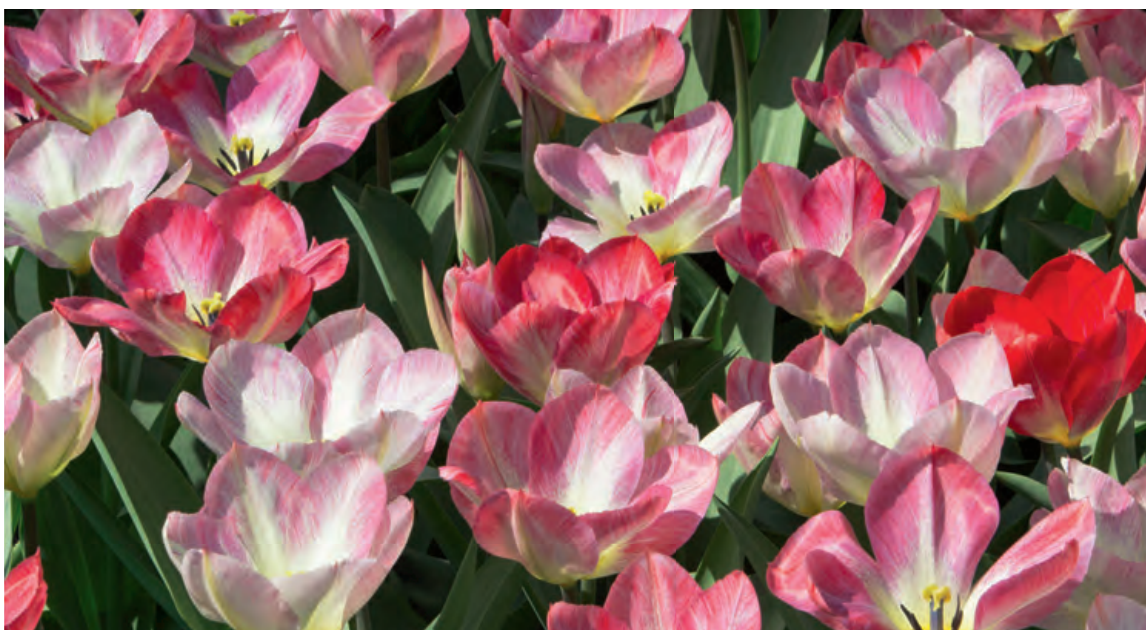
Double Flowering

Exotic Emperor 10/bag
Height 18" Size 12/+ cm
100/bin 500/tray



NEW

Apricot Emperor 10/bag
Height 16" Size 12/+ cm
100/bin 500/tray



Flaming Emperor 10/bag
Height 16" Size 12/+ cm
100/bin 500/tray

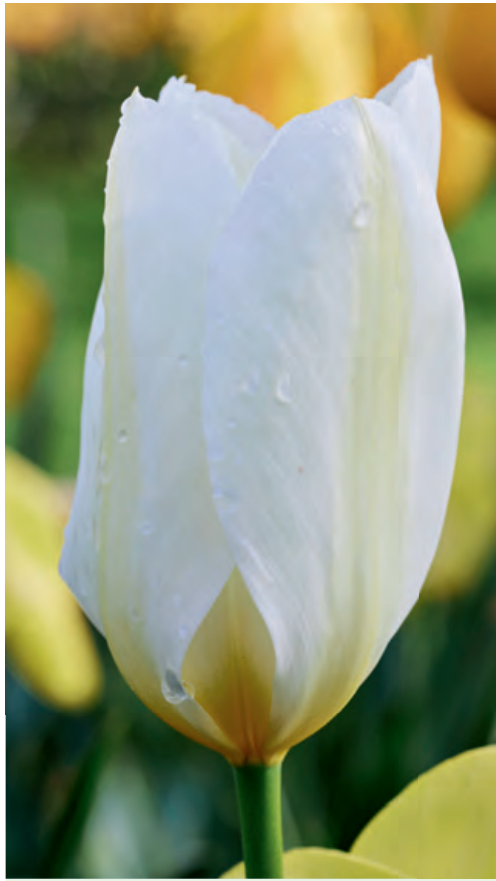


Golden Emperor 10/bag
Height 16" Size 12/+ cm
100/bin 500/tray



Orange Emperor
Height 16"
100/bin

10/bag
Size 12/+ cm
500/tray



White Emperor
Height 18"
100/bin

10/bag
Size 12/+ cm
500/tray



Red Emperor
Height 18"
100/bin

10/bag
Size 12/+ cm
500/tray



Double Flowering

Disneyland Paris
Height 16"
100/bin

10/bag
Size 12/+ cm
500/tray



Emperor Mix
Height 16-18"
100/bin

10/bag
Size 12/+ cm
500/tray

TULIPS



Botanical

Early Spring

Bulb Size

Varies

Retail Packages

10 or 25 bulbs per bag

Bin Display

100 or 150 bulbs per box

Bulk

not available in trays

Botanical (Miniature) tulips are the earliest to bloom in the spring, and feature unique flower shapes on short stems.

These tulips are the most reliable for naturalizing, and pair perfectly with crocus, scilla and early daffodils.

This year, we welcome back a few personal favorites; cardinal red Showwinner, and the Greigii variety Concerto.



Tulip Showwinner & Crocus Peter Pan (page 75)



Little Beauty (Humilis)

Height 6"
25/bag

Size 6/+ cm
150/bin



Multi-Flowering

Quebec (Greigii)

Height 8"
10/bag

Size 12/+ cm
100/bin



NEW

Concerto (Greigii)

Height 8"
10/bag

Size 12/+ cm
100/bin



NEW

Earliest tulip to bloom!

Showwinner (Kaufmanniana)

Height 8"
10/bag

Size 12/+ cm
100/bin



Lilac Wonder (Bakeri)

Height 6"
25/bag

Size 6/+ cm
150/bin



Tarda (Dasystemon)

Height 3"
25/bag

Size 8/+ cm
150/bin

TULIPS



Single Early

Early Spring

Bulb Size

12/+ cm

Retail Packages

10 bulbs per bag

Bin Display

100 bulbs per box

Bulk

500 bulbs per tray

Single Early (Prince) tulips are the earliest long-stemmed tulips to bloom, and an excellent choice for landscaping or Easter pot production. Their egg-shaped flowers stand strong in severe early spring weather and combine well with hyacinths and early to mid-season daffodils.



Mystic Prince
Height 14"
100/bin

10/bag
Size 12/+ cm
500/tray



Prince Mix
Height 14"
100/bin

10/bag
Size 12/+ cm
500/tray



Ruby Prince
Height 16"
100/bin

10/bag
Size 12/+ cm
500/tray



Sunny Prince
Height 14"
100/bin

10/bag
Size 12/+ cm
500/tray



Salmon Prince
Height 12"
100/bin

10/bag
Size 12/+ cm
500/tray



Purple Prince
Height 14"
100/bin

10/bag
Size 12/+ cm
500/tray



White Prince
Height 12"
100/bin

10/bag
Size 12/+ cm
500/tray

TULIPS



Double

Early to Late Season

Bulb Size

12/+ cm or 11/12 cm

Retail Packages

10 bulbs per bag

Bin Display

100 or 125 bulbs per box

Bulk

500 or 700 bulbs per tray

Featuring giant, peony-like blooms in an array of bright colors, Double tulips are a favorite of cut flower farmers! These varieties pair well with muscari, and are very attractive in mass plantings. Please note the taller varieties prefer a spot protected from wind.

Color-Changing



Early Season

Double Gudoshnik
Height 24"
100/bin

10/bag
Size 12/+ cm
500/tray



NEW

Late Season

Carnaval de Nice
Height 20"
125/bin

10/bag
Size 11/12 cm
700/tray



NEW

Early Season

Limousine
Height 14"
125/bin

10/bag
Size 11/12 cm
700/tray



NEW

Early Season

Pamplona
Height 14"
125/bin

10/bag
Size 11/12 cm
700/tray



Early Season

Columbus
Height 14"
125/bin

10/bag
Size 11/12 cm
700/tray



Mid Season

Yellow Pomponette 10/bag
Height 22" Size 12/+ cm
100/bin 500/tray



Mid Season

Sun Lover 10/bag
Height 22" Size 12/+ cm
100/bin 500/tray



Mid Season

Miranda 10/bag
Height 22" Size 12/+ cm
100/bin 500/tray



Mid Season

Spring Joy Mix 10/bag
Height 22" Size 12/+ cm
100/bin 500/tray



Mid Season

Foxy Foxtrot
Height 14"
100/bin

10/bag
Size 12/+ cm
500/tray



Mid Season

Double Negrita
Height 18"
100/bin

10/bag
Size 12/+ cm
500/tray



Mid Season

Foxtrot
Height 14"
100/bin

10/bag
Size 12/+ cm
500/tray



Mid Season

Romantic Mix
Height 14"
100/bin

10/bag
Size 12/+ cm
500/tray



Mid Season

Mondial
Height 12"
125/bin

10/bag
Size 11/12 cm
700/tray



Late Season

Palmyra
Height 20"
125/bin

10/bag
Size 11/12 cm
700/tray



Late Season

Icoon
Height 20"
100/bin

10/bag
Size 12/+ cm
500/tray

TULIPS



Darwin Hybrid

Mid Season

Bulb Size

12/+ cm

Retail Packages

10 bulbs per bag

Bin Display

100 bulbs per box

Bulk

500 bulbs per tray

Darwin Hybrid tulips are our specialty, and the most popular class for landscaping and outdoor cut flowers. Featuring massive flowers on tall, strong stems, these varieties are widely used for mass plantings. Most of the varieties in this section are grown on our own farms, including the Ruigrok exclusive Wedding Dress.

This year we are proud to introduce Kunyun, which offers a dazzling display of soft pink and yellow with streaks of fuchsia.



Golden Parade
 Height 24"
 100/bin

10/bag
 Size 12/+ cm
 500/tray



Parade
 Height 24"
 100/bin

10/bag
 Size 12/+ cm
 500/tray



Ad Rem
 Height 24"
 100/bin

10/bag
 Size 12/+ cm
 500/tray



Banja Luka 10/bag
 Height 22" Size 12/+ cm
 100/bin 500/tray



Daydream 10/bag
 Height 22" Size 12/+ cm
 100/bin 500/tray



Blushing Apeldoorn 10/bag
 Height 22" Size 12/+ cm
 100/bin 500/tray



Apeldoorn Elite 10/bag
 Height 22" Size 12/+ cm
 100/bin 500/tray



Olympic Flame 10/bag
 Height 24" Size 12/+ cm
 100/bin 500/tray



Apeldoorn Mix 10/bag
 Height 22" Size 12/+ cm
 100/bin 500/tray

TULIPS



Impression Series

A pretty impressive family of tulips!

This class stands out for their huge flower heads on tall, strong stems and comes in shades of red, pink and soft orange.

All varieties are grown on our own farm.

Red and Pink Impression are our top overall sellers for landscape tulips.



Best Seller

Pink Impression 10/bag
 Height 24" Size 12/+ cm
 100/bin 500/tray



Best Seller

Red Impression 10/bag
 Height 24" Size 12/+ cm
 100/bin 500/tray



variegated
 foliage

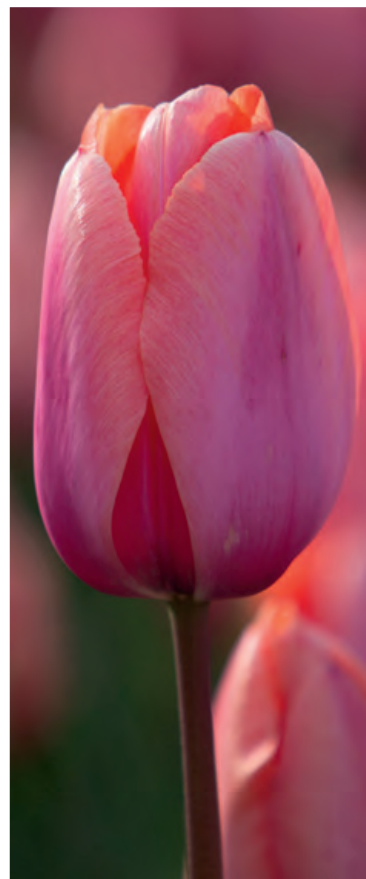
Design Impression 10/bag
 Height 24" Size 12/+ cm
 100/bin 500/tray



Impression Mix 10/bag
 Height 24" Size 12/+ cm
 100/bin 500/tray



Blushing Impression 10/bag
 Height 24" Size 12/+ cm
 100/bin 500/tray



Apricot Impression 10/bag
 Height 24" Size 12/+ cm
 100/bin 500/tray



Big Love 10/bag
 Height 24" Size 12/+ cm
 100/bin 500/tray



Wedding Dress 10/bag
 Height 24" Size 12/+ cm
 100/bin 500/tray



First to bloom

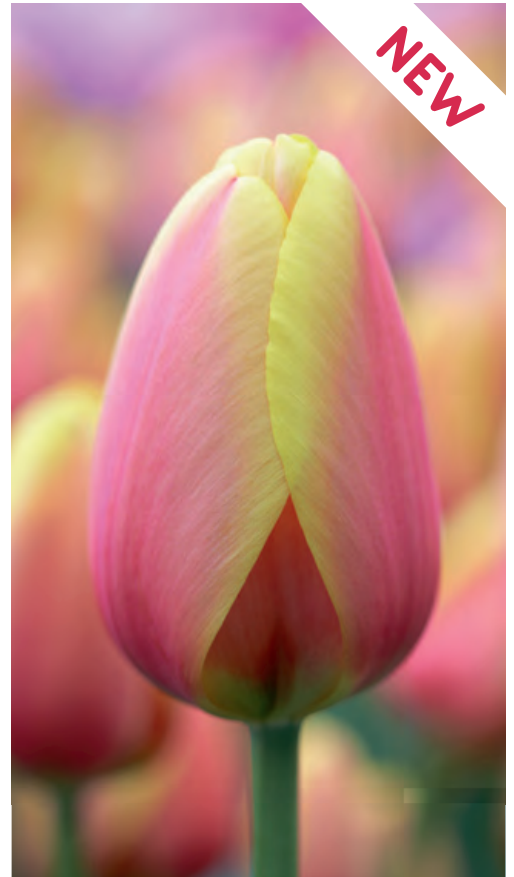
Lalibela 10/bag
 Height 24" Size 12/+ cm
 100/bin 500/tray



Purple Pride 10/bag
 Height 24" Size 12/+ cm
 100/bin 500/tray



World's Favourite 10/bag
 Height 24" Size 12/+ cm
 100/bin 500/tray



World Peace 10/bag
 Height 24" Size 12/+ cm
 100/bin 500/tray



#1 yellow!

Novi Sun
Height 24"
100/bin

10/bag
Size 12/+ cm
500/tray



Hakuun
Height 24"
100/bin

10/bag
Size 12/+ cm
500/tray



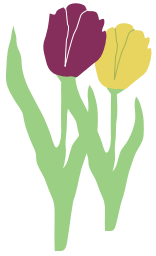
NEW

Color-Changing

Kunyun
Height 24"
100/bin

10/bag
Size 12/+ cm
500/tray

TULIPS



Van Eijk Series

Members of the Van Eijk tulip family are the earliest Darwin Hybrid's to bloom, and combine beautifully with late blooming daffodils. Van Eijk tulips feature long-lasting blooms in rich shades of red, pink and orange, and are an excellent choice for larger plantings.



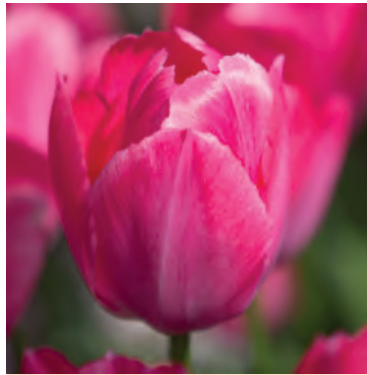
Van Eijk Mix
Height 22"
100/bin

Size 12/+ cm
500/tray



Van Eijk
Height 22"
100/bin

10/bag
Size 12/+ cm
500/tray



Lady van Eijk
Height 22"
100/bin

10/bag
Size 12/+ cm
500/tray



Pink Sound
Height 22"
100/bin

10/bag
Size 12/+ cm
500/tray



Red van Eijk
Height 22"
100/bin

10/bag
Size 12/+ cm
500/tray



Orange van Eijk
Height 22"
100/bin

10/bag
Size 12/+ cm
500/tray



Mystic van Eijk
Height 22"
100/bin

10/bag
Size 12/+ cm
500/tray



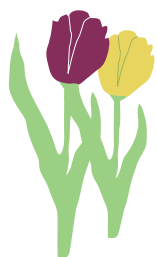
Salmon Van Eijk
Height 22"
100/bin

10/bag
Size 12/+ cm
500/tray



Van Eijk & Bridal Crown
(page 66)

TULIPS



Mixed

Darwin Hybrid Mixture

One of the all time favourites for landscaping is our Darwin Hybrid Mixture. All available shades of yellow, red, pink, white, orange and 2-tones are present in this mix. Especially impressive in mass displays.



Darwin Hybrid Mix
Height 22"
100/bin

Size 12+ cm
500/tray

TULIPS



Triumph

Mid Season

Bulb Size

12/+ cm

Retail Packages

10 bulbs per bag

Bin Display

100 bulbs per box

Bulk

500 bulbs per tray

Triumph tulips are the largest and most versatile class, available in an astonishing range of colors.

This category features long-lasting, angular flowers on medium height stems that stand up to severe spring weather.

The top choice for forcing in pots, Triumph tulips are also very popular for landscaping and cut flower production. Many of these varieties are grown on our own farm in the Netherlands!



Sunrise Dynasty 10/bag
Height 20" Size 12/+ cm
100/bin 500/tray



Dynasty 10/bag
Height 20" Size 12/+ cm
100/bin 500/tray



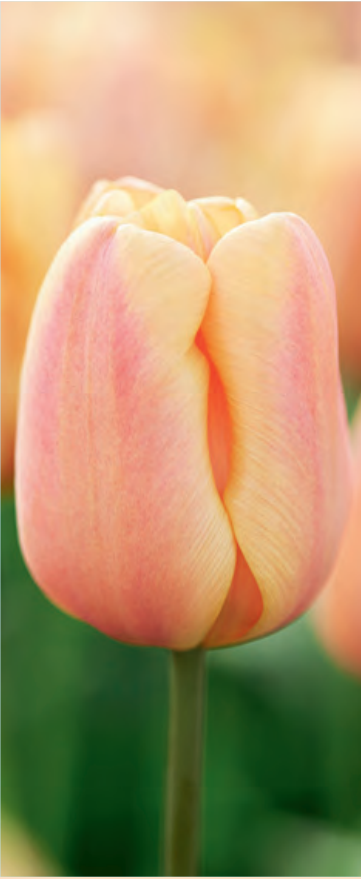
Orange Dynasty 10/bag
Height 18" Size 12/+ cm
100/bin 500/tray



Sunrise Dynasty



Tom Pouce 10/bag
Height 18" Size 12/+ cm
100/bin 500/tray



Apricot Foxx
Height 18"
100/bin

10/bag
Size 12/+ cm
500/tray



Spring Tide
Height 20"
100/bin

10/bag
Size 12/+ cm
500/tray



Spring Sunrise
Height 20"
100/bin

10/bag
Size 12/+ cm
500/tray



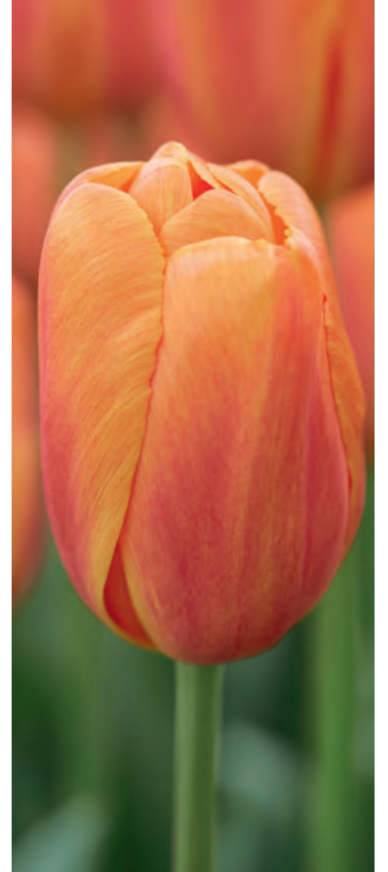
Color-Changing
Height 20"
100/bin

10/bag
Size 12/+ cm
500/tray



Slawa
Height 18"
100/bin

10/bag
Size 12/+ cm
500/tray



Delta Storm
Height 22"
100/bin

10/bag
Size 12/+ cm
500/tray



NEW

Cadans
Height 18"
100/bin

10/bag
Size 12/+ cm
500/tray



Carnaval de Rio
Height 16"
100/bin

10/bag
Size 12/+ cm
500/tray



NEW



Bingo
Height 16"
100/bin

10/bag
Size 12/+ cm
500/tray



Triumph Mix
Height 20"
100/bin

Size 12/+ cm
500/tray

NEW



Pink Ardour
Height 20"
100/bin

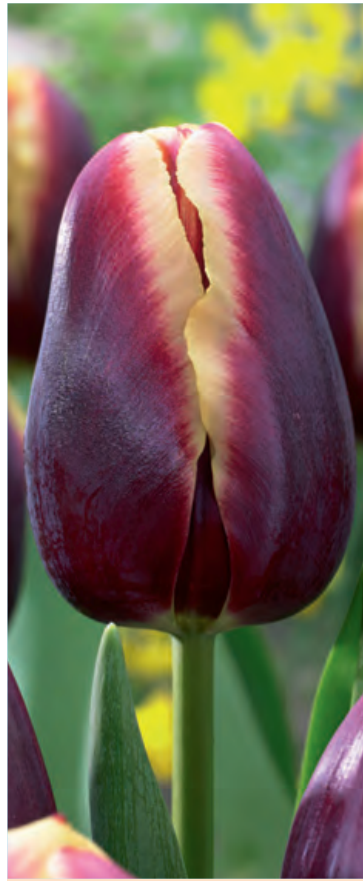
10/bag
Size 12/+ cm
500/tray

NEW



Jacuzzi
Height 16"
100/bin

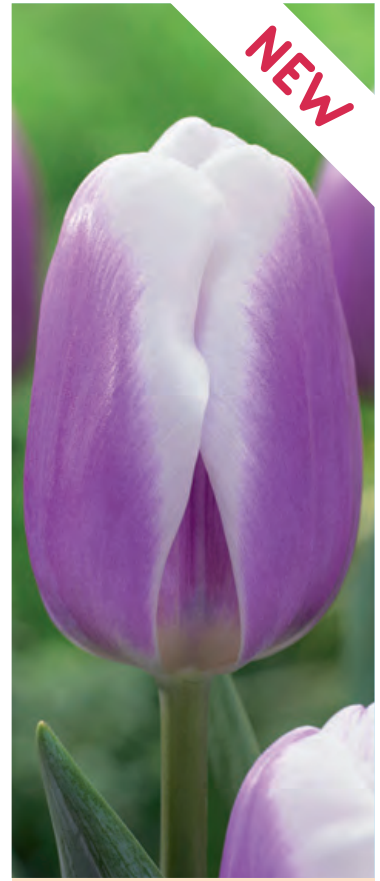
10/bag
Size 12/+ cm
500/tray



Doberman
Height 20"
100/bin

10/bag
Size 12/+ cm
500/tray

NEW



Librije
Height 18"
100/bin

10/bag
Size 12/+ cm
500/tray



Negrita
Height 18"
100/bin

10/bag
Size 12/+ cm
500/tray

NEW



Flag sport

Bojangles
Height 18"
100/bin

10/bag
Size 12/+ cm
500/tray



Ronaldo
Height 18"
100/bin

10/bag
Size 12/+ cm
500/tray



Royal Virgin
Height 20"
100/bin

10/bag
Size 12/+ cm
500/tray



Kansas Proud
Height 22"
100/bin

10/bag
Size 12/+ cm
500/tray



Jumbo Pink
Height 24"
100/bin

10/bag
Size 12/+ cm
500/tray



Rodolfo
Height 18"
100/bin

10/bag
Size 12/+ cm
500/tray



NEW



Strong Love
Height 20"
100/bin

10/bag
Size 12/+ cm
500/tray

Strong Gold
Height 20"
100/bin

10/bag
Size 12/+ cm
500/tray



NEW

Roman Empire
Height 20"
100/bin

10/bag
Size 12/+ cm
500/tray



NEW

Circuit
Height 20"
100/bin

10/bag
Size 12/+ cm
500/tray

TULIPS



Flag Series

Mid Season

Bulb Size

12/+ cm

Retail Packages

10 bulbs per bag

Bin Display

100 bulbs per box

Bulk

500 bulbs per tray

These strong and medium height tulips are all grown at our own nursery.

Excellent tulips for landscaping. Combine them with Muscari Armeniacum for a striking display.



Pink Flag
Height 20"
100/bin

10/bag
Size 12/+ cm
500/tray



Sweet Flag
Height 20"
100/bin

10/bag
Size 12/+ cm
500/tray



Cream Flag
Height 20"
100/bin

10/bag
Size 12/+ cm
500/tray



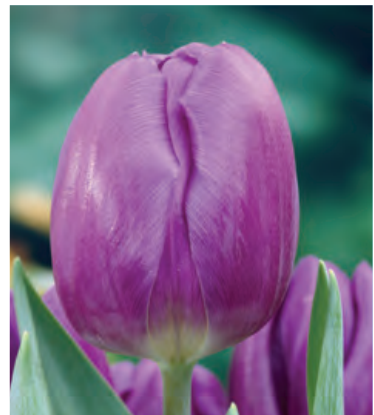
White Flag
Height 20"
100/bin

10/bag
Size 12/+ cm
500/tray



Flaming Flag
Height 20"
100/bin

10/bag
Size 12/+ cm
500/tray



Purple Flag
Height 20"
100/bin

10/bag
Size 12/+ cm
500/tray



All colors

Flag Mixture
Height 20"
100/bin

10/bag
Size 12/+ cm
500/tray



Purple and white

Flaming Purple Mix
Height 20"
100/bin

10/bag
Size 12/+ cm
500/tray

TULIPS



Lily Flowering

Late Spring

Bulb Size

12/+ cm

Retail Packages

10 bulbs per bag

Bin Display

100 bulbs per box

Bulk

500 bulbs per tray

Lily Flowering tulips are characterized by elegant flowers with outward pointed petals. These varieties perform especially well as the focal point of a border, mixed with Single Late tulips, or in combination with early perennials. Blooms can extend through late May.



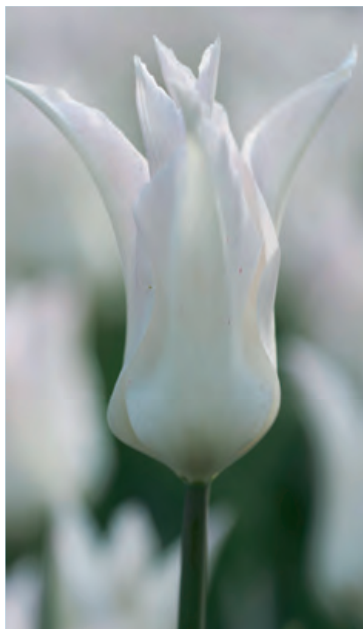
Fire Wings
Height 20"
100/bin

10/bag
Size 12/+ cm
500/tray



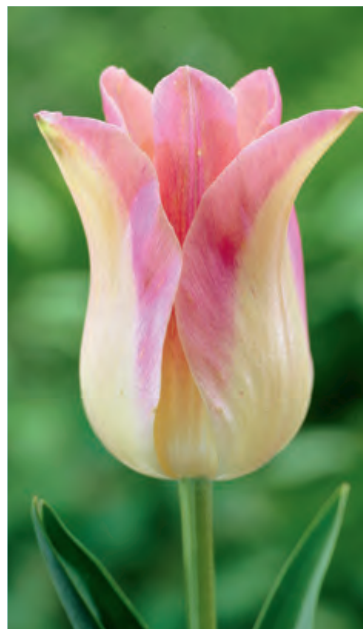
Ballerina
Height 22"
100/bin

10/bag
Size 12/+ cm
500/tray



White Triumphator
Height 24"
100/bin

10/bag
Size 12/+ cm
500/tray



Elegant Lady
Height 20"
100/bin

10/bag
Size 12/+ cm
500/tray



Lasting Love
Height 22"
100/bin

10/bag
Size 12/+ cm
500/tray



Purple Dream
Height 28"
100/bin

10/bag
Size 12/+ cm
500/tray



Thanksgiving Point
Height 20"
100/bin

10/bag
Size 12/+ cm
500/tray





Marilyn
Height 22"
100/bin

10/bag
Size 12/+ cm
500/tray



Claudia
Height 24"
100/bin

10/bag
Size 12/+ cm
500/tray



Lily Flowering Mix
Height 24"
100/bin

Size 12/+ cm
500/tray

TULIPS



Parrot

Late Spring

Bulb Size

11/12 cm

Retail Packages

10 bulbs per bag

Bin Display

125 bulbs per box

Bulk

700 bulbs per tray

The extraordinary shapes of Parrot tulips have been beloved since the Dutch Golden Age, and appear in many works of art from that period. Parrot tulips feature huge flowers with serrated petals, in an array of bright colors. Plant in areas that are protected from wind and heavy rain. Exceptionally popular with cut flower farmers. We recommend early ordering for these varieties, as availability is very limited.



Parrot King 10/bag
Height 16" Size 11/12 cm
125/bin 700/tray



Silver Parrot 10/bag
Height 16" Size 11/12 cm
125/bin 700/tray



La Courtine Parrot 10/bag
Height 24" Size 11/12 cm
125/bin 700/tray



Apricot Parrot 10/bag
Height 24" Size 11/12 cm
125/bin 700/tray



Black Parrot 10/bag
Height 20" Size 11/12 cm
125/bin 700/tray



Super Parrot 10/bag
Height 16" Size 11/12 cm
125/bin 700/tray



Avignon Parrot 10/bag
 Height 24" Size 11/12 cm
 125/bin 700/tray



Deejay Parrot 10/bag
 Height 24" Size 11/12 cm
 125/bin 700/tray



Negrita Parrot 10/bag
 Height 18" Size 11/12 cm
 125/bin 700/tray



Estella Rijnveld 10/bag
 Height 22" Size 11/12 cm
 125/bin 700/tray



Caribbean Parrot 10/bag
 Height 24" Size 11/12 cm
 125/bin 700/tray

TULIPS



Fringed

Late Spring

Bulb Size

11/12 cm

Retail Packages

10 bulbs per bag

Bin Display

125 bulbs per box

Bulk

700 bulbs per tray

Fringed (Crispa) tulips are categorized by their delicately fringed petals. One of the latest tulip classes to bloom. Ideal for beds, borders and cut flowers. This year, we have added a unique group of double flowering varieties.



Labrador
Height 20"
125/bin

10/bag
Size 11/12 cm
700/tray



Fancy Frills
Height 20"
125/bin

10/bag
Size 11/12 cm
700/tray



Fabio
Height 20"
125/bin

10/bag
Size 11/12 cm
700/tray



New Santa
Height 18"
125/bin

10/bag
Size 11/12 cm
700/tray



Lambada
Height 22"
125/bin

10/bag
Size 11/12 cm
700/tray



Color-Changing

Purple Circus
Height 16"
125/bin

10/bag
Size 11/12 cm
700/tray



NEW

Brisbane
 Height 18"
 125/bin

10/bag
 Size 11/12 cm
 700/tray



Flamenco
 Height 22"
 125/bin

10/bag
 Size 11/12 cm
 700/tray



NEW

Perth
 Height 16"
 125/bin

10/bag
 Size 11/12 cm
 700/tray



NEW

Qatar
 Height 18"
 125/bin

10/bag
 Size 11/12 cm
 700/tray



NEW

Snow Crystal
 Height 16"
 125/bin

10/bag
 Size 11/12 cm
 700/tray



NEW

Mid Season

Crystal Star
 Height 22"
 125/bin

10/bag
 Size 11/12 cm
 700/tray

TULIPS



Green

Late Spring

Bulb Size

11/12 cm

Retail Packages

10 bulbs per bag

Bin Display

125 bulbs per box

Bulk

700 bulbs per tray

Green (Viridiflora) tulips are categorized by their green petals with strikes of contrasting colors. Late blooming, these varieties feature sturdy stems and long-lasting flowers, which are often pointed outwards (similar to the Lily Flowering class). Excellent for cut flowers!



Purple Doll
Height 20"
125/bin

10/bag
Size 11/12 cm
700/tray



Greenland
Height 20"
125/bin

10/bag
Size 11/12 cm
700/tray



Doll's Minuet
Height 20"
125/bin

10/bag
Size 11/12 cm
700/tray



Green Power
Height 20"
125/bin

10/bag
Size 11/12 cm
700/tray



Orange Marmelade
Height 20"
125/bin

10/bag
Size 11/12 cm
700/tray

TULIPS



Multi-Flowering

Late Spring

Bulb Size

11/12 cm

Retail Packages

10 bulbs per bag

Bin Display

125 bulbs per box

Bulk

700 bulbs per tray

Multi-Flowering (Bunch-Flowering) tulips are the latest class to bloom, and feature 3-4 flowers per stem. Ideally suited for a prominent spot in borders, where their unique blooms stand out.

NEW



Antoinette 10/bag
Height 16" Size 11/12 cm
125/bin 700/tray

Sunshine Club 10/bag
Height 16" Size 11/12 cm
125/bin 700/tray

NEW



Purple Elegance 10/bag
Height 16" Size 11/12 cm
125/bin 700/tray

NEW



Candy Club 10/bag
Height 16" Size 11/12 cm
125/bin 700/tray

NEW



Flaming Club 10/bag
Height 16" Size 11/12 cm
125/bin 700/tray

TULIPS



Single Late

Late Spring

Bulb Size

12/+ cm

Retail Packages

10 bulbs per bag

Bin Display

100 bulbs per box

Bulk

500 bulbs per tray

Single Late (French) tulips are the tallest class, featuring elegant, bright flowers that can bloom for much of May. Combine beautifully with Lily Flowering and Parrot tulips. The best choice for landscape plantings in the southern USA (zones 5b – 9a).

NEW



Big Smile
Height 26"
100/bin

10/bag
Size 12/+ cm
500/tray

Sky High Scarlet
Height 28"
100/bin

10/bag
Size 12/+ cm
500/tray



Grand Perfection
Height 24"
100/bin

10/bag
Size 12/+ cm
500/tray



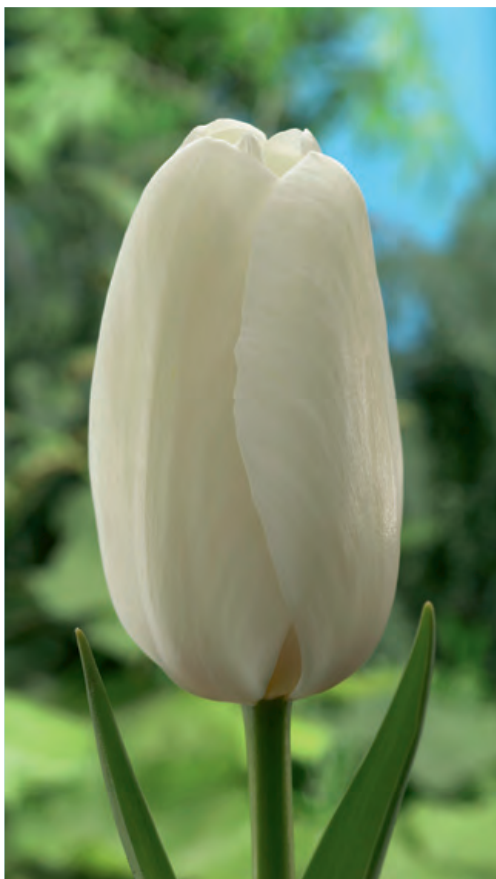
Helmar
Height 24"
100/bin

10/bag
Size 12/+ cm
500/tray



Sorbet
 Height 24"
 100/bin

10/bag
 Size 12/+ cm
 500/tray



Catherina
 Height 24"
 100/bin

10/bag
 Size 12/+ cm
 500/tray



Mata Hari
 Height 28"
 100/bin

10/bag
 Size 12/+ cm
 500/tray

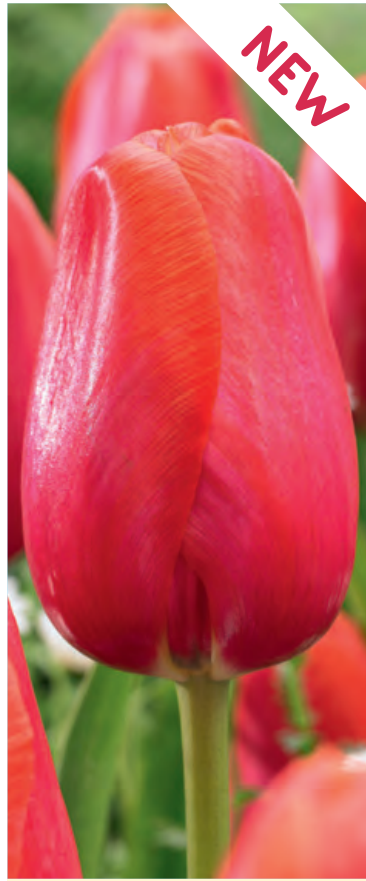


Kingsblood
 Height 26"
 100/bin

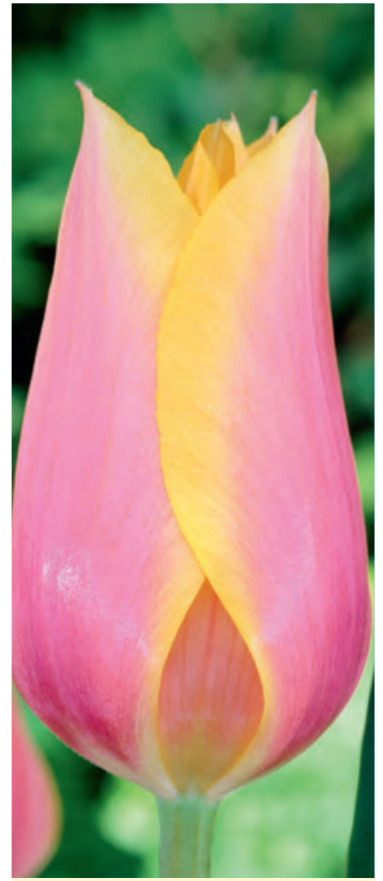
10/bag
 Size 12/+ cm
 500/tray



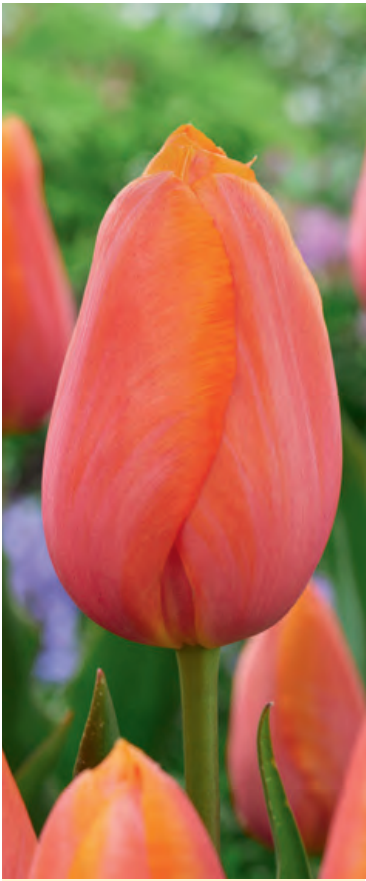
Color-Changing
 El Nino 10/bag
 Height 30" Size 12/+ cm
 100/bin 500/tray



Avignon 10/bag
 Height 24" Size 12/+ cm
 100/bin 500/tray



Blushing Lady 10/bag
 Height 24" Size 12/+ cm
 100/bin 500/tray



Dordogne 10/bag
 Height 24" Size 12/+ cm
 100/bin 500/tray



Stunning Apricot 10/bag
 Height 28" Size 12/+ cm
 100/bin 500/tray

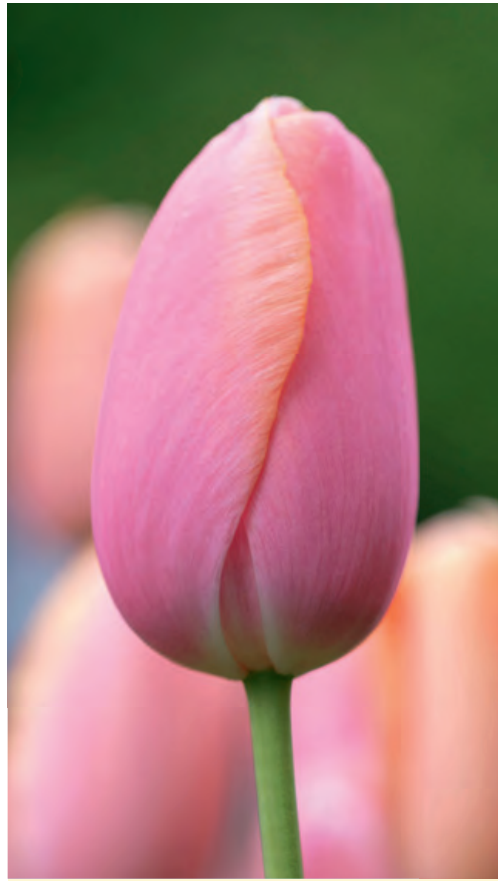


Temple of Beauty 10/bag
 Height 28" Size 12/+ cm
 100/bin 500/tray



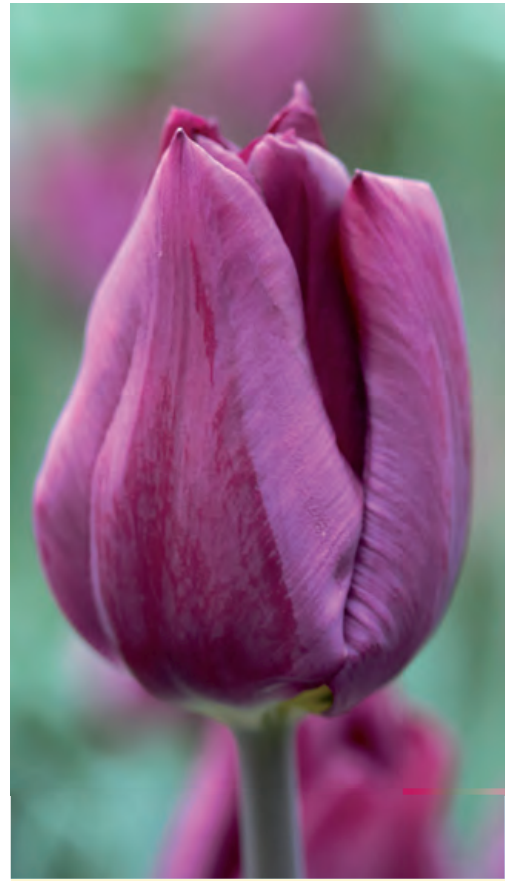
Queen of Night
Height 24"
100/bin

10/bag
Size 12/+ cm
500/tray



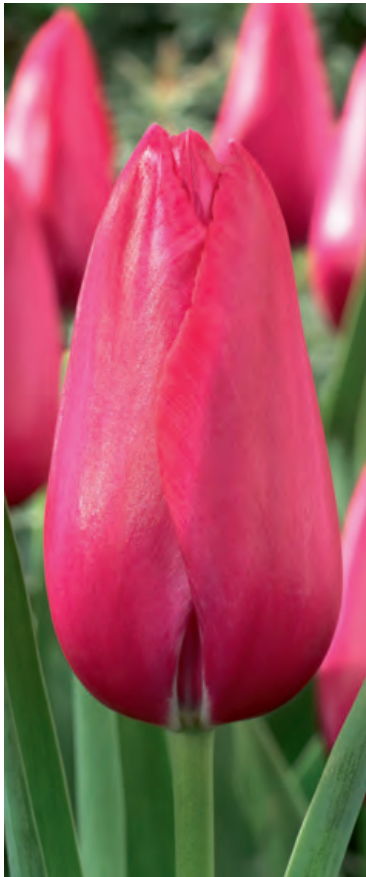
Menton
Height 26"
100/bin

10/bag
Size 12/+ cm
500/tray



Purple Lady
Height 24"
100/bin

10/bag
Size 12/+ cm
500/tray



Wilja
Height 24"
100/bin

10/bag
Size 12/+ cm
500/tray



Alibi
Height 22"
100/bin

10/bag
Size 12/+ cm
500/tray

TULIPS



Mixed

Single Late Mixtures

Most Single Late tulips descend from the famous Mrs. John T. Scheepers variety and were originally grown in France. Our popular French Mixture delivers an array of color, ranging from pure white to nearly black and everything in between. Purple Teddy Mix combines the simple beauty of Purple Lady and Teddy Kolk, whereas Black and White Cookie and Sunshine Mix are a perfect marriage of three colors.



French Mixture
Height 24-26" Size 12+ cm
100/bin 500/tray



Purple Teddy Mix
Height 24-26"
100/bin

Size 12/+ cm
500/tray



Black & White Cookie Mix
Height 24-26"
100/bin

Size 12/+ cm
500/tray



Sunshine Mix
Height 24-26"
100/bin

Size 12/+ cm
500/tray

TULIPS



Mixed

Mid Season Mixtures

We have carefully developed our mid-season blends to perfectly match color, height and bloom time.

All varieties are grown at the farm of Ruigrok Flowerbulbs.

Please note that all images of tulip mixes are the best representation of that bloom season.

Each spring is unique! Additional mixes can be found throughout the catalog.



Stars and Stripes Mix
Height 22" Size 12/+ cm
100/bin 500/tray



Supernova Mix
Height 22" Size 12/+ cm
100/bin 500/tray



Blushing Purple Mix

Height 22"
100/bin

Size 12/+ cm
500/tray



Changing Colors Mix

Height 22"
100/bin

Size 12/+ cm
500/tray



Holiday Mix

Height 18"
100/bin

Size 12/+ cm
500/tray



Easter Egg Mix

Height 22"
100/bin

Size 12/+ cm
500/tray



Spring Festival Mix

Height 22"
100/bin

Size 12/+ cm
500/tray

TULIPS



Long-lasting Single Color Mixtures

Our All Season Landscape Mixes are designed to bloom for an extended period, in overlapping sequences.

All mixes have been tested at our own Tulip Barn show garden in the Netherlands. Each blend contains at least 10 varieties of various tulip classes and is best suited for mass plantings where an extended bloom time is required.

For an optimal effect, plant more densely than usual (2 inches apart).



All Season Yellow

Height 14-28"
Size 12/+ cm
100/bin
500/tray



All Season Red

Height 14-28"
Size 12/+ cm
100/bin
500/tray



All Season Purple

Height 14-28"
Size 12/+ cm
100/bin
500/tray



All Season Orange

Height 14-28"
Size 12/+ cm
100/bin
500/tray



All Season White

Height 14-28"
Size 12/+ cm
100/bin
500/tray



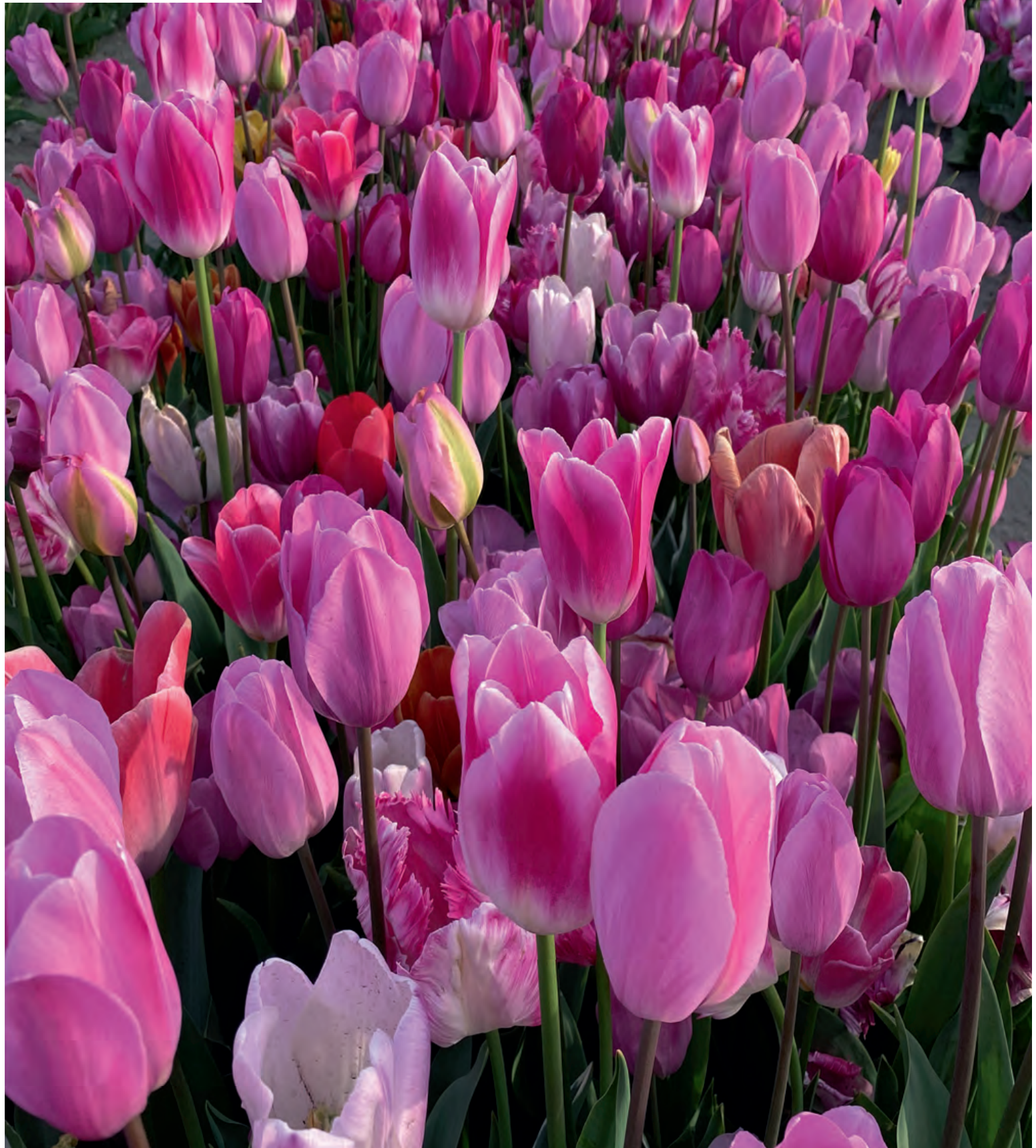
All Season Pink

Height 14-28"

Size 12/+ cm

100/bin

500/tray



NEW



Named after the Dutch painter Piet Mondriaan; a true pioneer of modern art who became famous for his compositions featuring primary colors on black grids. Last year, we tested this mix with varying types of red, yellow and purple tulips at The Tulip Barn show garden in Hillegom, the Netherlands. The contrasting bright colors made this mix a favorite photo spot for our visitors!

Mondriaan All Season Mix

Height 14-28"
Size 12/+ cm
100/bin
500/tray



Fire Glow All Season Mix

Height 14-28"

Size 12/+ cm

100/bin

500/tray



Sweet Pink All Season Mix

Height 14-28"
Size 12/+ cm
100/bin
500/tray



Blue Ribbon All Season Mix

Height 14-28"
Size 12/+ cm
100/bin
500/tray



TULIPS



Early to Late Season

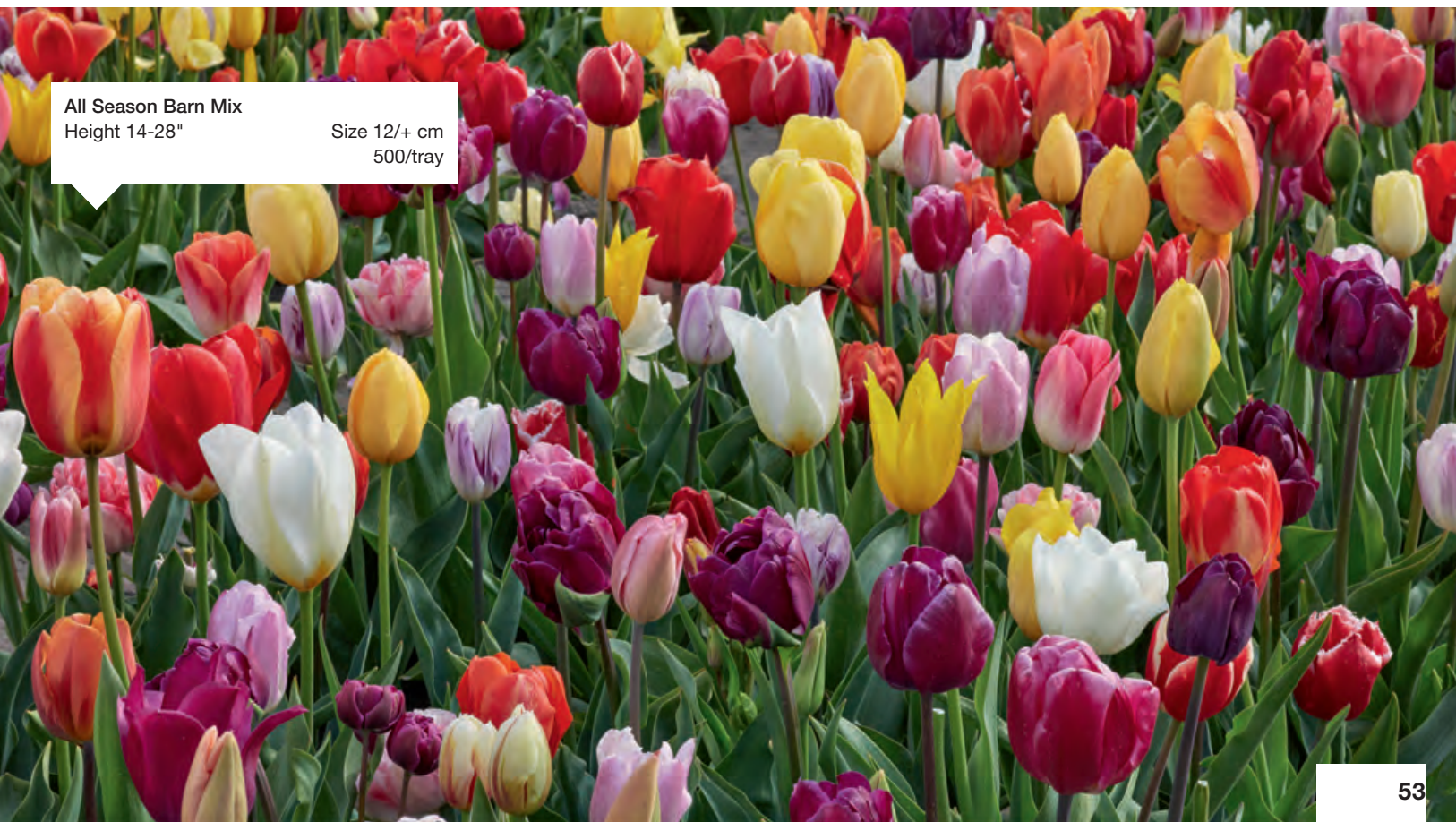
Our ultimate tulip mixture, with tens of millions of bulbs planted each fall. All Season Barn Mix is the most popular choice of our u-pick customers!



All Season Barn Mix

All Season Barn Mix
Height 14-28"

Size 12/+ cm
500/tray



DAFFODILS



multi-colored

Early to Mid Season

Large Flowering Mix

One of our best-selling items each year! Our all-inclusive Large Flowering Mix spans every class of long-stemmed daffodil, and includes every color on the market. A favorite of landscape professionals for mass plantings. Deer resistant and naturalizing, will return strongly for many years!



Height

14-20"

Bulb Size

12/14 cm

Bin Display

75 bulbs per box

Bulk

400 bulbs per tray

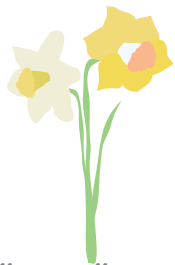
Bulb size

14/16 cm

Bulk

250 bulbs per tray

DAFFODILS



all yellows

Early to Mid Season Long-lasting Amsterdam Mix

For mass plantings that require an extended bloom time, Amsterdam Mix is the ideal choice.

This balanced mix contains at least 5 varieties that bloom sequentially and features the strongest varieties of yellow narcissus available.

In Southern states, the first blooms may appear as early as January. Plant approx. 12 bulbs per sq. Ft.



Height

14-20"

Bulb Size

12/14 cm

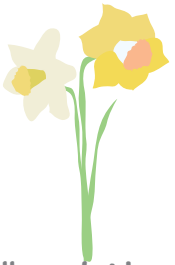
Bin Display

75 bulbs per box

Bulk

400 bulbs per tray

DAFFODILS



all whites

Early to Mid Season

Long-lasting Holland Mix

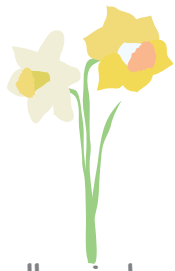
This elegant mix of pure white daffodils is a popular choice each fall! Holland Mix contains at least 5 varieties that bloom sequentially. In the southern USA, the first blooms may appear as early as January. Plant approximately 12 bulbs per square foot.



Holland Mix
Height 14-20"
75/bin

Size 12/14 cm
400/tray

DAFFODILS



all pinks

Early to Mid Season

Long-lasting Rotterdam Mix

This soft blend of pink cup daffodils is the perfect messenger of spring! Rotterdam Mix contains at least 5 varieties that bloom sequentially. Combines beautifully with All Season Orange or Pink Tulip Mix (pages 48 & 49). Plant approximately 12 bulbs per square foot.



Rotterdam Mix
Height 14-20"
75/bin

Size 12/14 cm
400/tray

DAFFODILS



Trumpet

Early Spring

Bulb Size

12/14 cm

Retail Packages

8 bulbs per bag

Bin Display

75 bulbs per box

Bulk

400 bulbs per tray

Trumpet daffodils are true heralds of spring.

The first class to appear after a long winter, this group includes the earliest daffodil to bloom (Rijnveld's Early Sensation) and our all-time best-seller (Dutch Master).

Featuring giant trumpets as large as the length of their petals, Trumpet daffodils are ideally suited for borders, containers, cut flowers and mass plantings.

Allow the foliage to completely die back to ensure strong perennialization. Like all daffodils, deer and rodent resistant.



Best Seller

Dutch Master
Height 18"
75/bin

8/bag
Size 12/14 cm
400/tray

Size 14/16 cm
250/tray



British Gamble 8/bag
Height 18" Size 12/14 cm
75/bin 400/tray



Goblet 8/bag
Height 18" Size 12/14 cm
75/bin 400/tray



Mount Hood 8/bag
Height 16" Size 12/14 cm
75/bin 400/tray



Rijnveld's Early Sensation 8/bag
Height 12" Size 12/14 cm
75/bin 400/tray

DAFFODILS



Large Cupped

Early Spring

Bulb Size

12/14 cm

Retail Packages

8 bulbs per bag

Bin Display

75 bulbs per box

Bulk

400 bulbs per tray

Large Cupped daffodils bloom right after the Trumpet's, and feature huge flowers in vivid colors. These varieties pair perfectly with early blooming tulips like Emperor's (pages 8 & 9). Well suited for beds, borders, containers and cut flowers.



Accent
Height 18"
75/bin

8/bag
Size 12/14 cm
400/tray



Standard Value
Height 20"
75/bin

8/bag
Size 12/14 cm
400/tray



Peaches and Cream
Height 18"
75/bin

8/bag
Size 12/14 cm
400/tray



Carlton
Height 18"
75/bin

8/bag
Size 12/14 cm
400/tray



Soestdijk
Height 18"
75/bin

8/bag
Size 12/14 cm
400/tray



Flower Record
Height 18"
75/bin

8/bag
Size 12/14 cm
400/tray



Ice Follies
Height 18"
75/bin

8/bag
Size 12/14 cm
400/tray



Pink Charm
Height 18"
75/bin

8/bag
Size 12/14 cm
400/tray



Pride of Lions
Height 18"
75/bin

8/bag
Size 12/14 cm
400/tray

DAFFODILS



Miniature

Early Spring

Bulb Size

12/14 cm

Retail Packages

10 bulbs per bag

Bin Display

100 bulbs per box

Bulk

500 bulbs per tray

Miniature (Botanical) daffodils come in many different shapes, and perform beautifully in low borders, containers, rock gardens or in the lawn. These varieties pair well with miniature tulips, scilla and muscari. This year we have added Tête de Luxe to our collection – a double version of the classic Tête a Tête!



Pueblo 10/bag
Height 14" Size 12/14 cm
100/bin 500/tray



Latest to bloom!

Thalia 10/bag
Height 14" Size 12/14 cm
75/bin 400/tray



Earliest to bloom!

February Gold 10/bag
Height 10" Size 12/14 cm
100/bin 500/tray



Jetfire 10/bag
Height 8" Size 12/14 cm
100/bin 500/tray



Double Tête

Tête de Luxe 10/bag
Height 10" Size 12/14 cm
100/bin 500/tray



Tête à Tête 10/bag
Height 8" Size 12/14 cm
100/bin 500/tray

NEW



Carice
Height 12"
100/bin

10/bag
Size 12/14 cm
500/tray



Minnow
Height 8"
100/bin

10/bag
Size 12/14 cm
500/tray



Hillstar
Height 10"
100/bin

10/bag
Size 12/14 cm
500/tray



Botanical Mixture
Height 8-14"
100/bin

10/bag
Size 12/14 cm
500/tray

DAFFODILS



Mid Season

Bulb Size

12/14 cm

Retail Packages

8 bulbs per bag

Bin Display

75 bulbs per box

Bulk

400 bulbs per tray

Double daffodils feature a filled center, instead of a traditional cup. Mid-season blooming, these stunning varieties pair perfectly with Darwin Hybrid and Triumph tulips, as well as hyacinths. Plant in small groups to highlight their fragrant, unique blooms! Planting in an area protected from strong wind is recommended, due to the heavy nature of the flowers.



White Lion
Height 18"
75/bin

8/bag
Size 12/14 cm
400/tray



Flower Drift
Height 18"
75/bin

8/bag
Size 12/14 cm
400/tray



Tahiti
Height 18"
75/bin

8/bag
Size 12/14 cm
400/tray



Obdam
Height 18"
75/bin

8/bag
Size 12/14 cm
400/tray



Sweet Desire
Height 18"
75/bin

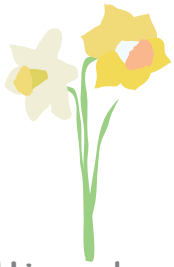
8/bag
Size 12/14 cm
400/tray



Ice King
Height 18"
75/bin

8/bag
Size 12/14 cm
400/tray

DAFFODILS



multi-colored

Mid Season

Double Mix

Our gorgeous Double Mix provides a spring blast of fragrance and rich color, and contains at least 5 varieties.

Well suited for small plantings along a border, and extremely popular for mass plantings as a change of pace from more traditional daffodils.



Double Mix
Height 18"
75/bin

Size 12/14 cm
400/tray

DAFFODILS



Bunch Flowering

Late Spring

Bulb Size

12/14 cm

Retail Packages

8 bulbs per bag

Bin Display

75 bulbs per box

Bulk

400 bulbs per tray

Bunch flowering daffodils flower abundantly, often producing 6 or more blooms per stem.

The latest to bloom and most fragrant class of daffodils!

Combine perfectly with mid-late season tulips.

NEW



Sir Winston Churchill 8/bag
Height 12" Size 12/14 cm
75/bin 400/tray



Martinette 8/bag
Height 14" Size 12/14 cm
75/bin 400/tray

Prom Dance 8/bag
Height 14" Size 12/14 cm
75/bin 400/tray



Yellow Cheerfulness 8/bag
Height 16" Size 12/14 cm
75/bin 400/tray

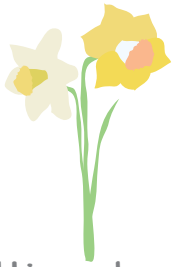


Bridal Crown 8/bag
Height 16" Size 12/14 cm
75/bin 400/tray



Geranium 8/bag
Height 14" Size 12/14 cm
75/bin 400/tray

DAFFODILS



Multi-colored

Our colorful Fragrant Mix is carefully composed of more than 5 varieties. Late blooming, they are at their best in large plantings, combined with mid season and late tulips.

Late Season

Fragrant Mix



Fragrant Mix
Height 14-16"
75/bin

Size 12/14 cm
400/tray

DAFFODILS



Butterfly

Late Spring

Bulb Size

12/14 cm

Retail Packages

8 bulbs per bag

Bin Display

75 bulbs per box

Bulk

400 bulbs per tray

Butterfly (Split-Corona) daffodils are truly spectacular!

Featuring large, fragrant, late blooming flowers, these varieties are ideally suited for borders, containers, cut flowers and mass plantings.

It is strongly recommended to order these varieties early, as availability is limited.



Cassata
Height 14"
75/bin

8/bag
Size 12/14 cm
400/tray



Cum Laude
Height 16"
75/bin

8/bag
Size 12/14 cm
400/tray



Donau Park
Height 16"
75/bin

8/bag
Size 12/14 cm
400/tray



Lemon Beauty
Height 14"
75/bin

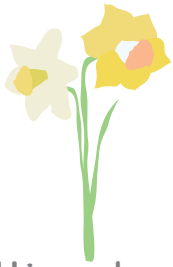
8/bag
Size 12/14 cm
400/tray



Orangery
Height 14"
75/bin

8/bag
Size 12/14 cm
400/tray

DAFFODILS



Multi-colored

The ideal choice for clients who want something a little different. This rich, abundant mixture of split-corona daffodils offers an array of bright colors and unusual blooms. Excellent for mass plantings, and deserving of a prominent spot in the border.

Late Season Butterfly Mix



Butterfly Mix
Height 14-16"
75/bin

Size 12/14 cm
400/tray

DAFFODILS



Small Cupped

Late Spring

Bulb Size

12/14 cm

Retail Packages

8 bulbs per bag

Bin Display

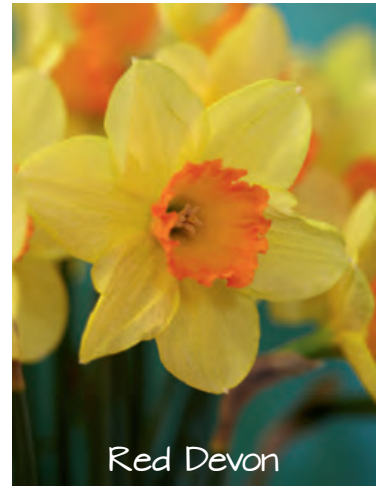
75 bulbs per box

Bulk

400 bulbs per tray

All Small Cupped daffodils descend from the original Poeticus, an heirloom variety originating in Southern Europe and the Balkans.

These elegant flowers combine well with late flowering tulips, especially the Lily Flowering class.



Red Devon



Poeticus Recurvus 8/bag
Height 14" Size 12/14 cm
75/bin 400/tray

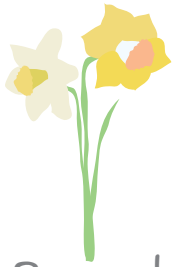


Barrett Browning 8/bag
Height 16" Size 12/14 cm
75/bin 400/tray



Red Devon 8/bag
Height 18" Size 12/14 cm
75/bin 400/tray

DAFFODILS



Bulk Paperwhites

Grown exclusively in Israel, Tazetta daffodils (commonly known as Paperwhites), are the tallest of the Narcissi growing to a height of up to 30". Their umbrels have as many as 8 flowers per stem. Very fragrant and primarily suited for indoor planting (can be planted outdoors in zones 8-11). Easy and quick to force at home; just place the bulbs on some pebble stones and water freely just below the base of the bulb. Blooms will appear in 4-6 weeks. Paperwhites have a tendency to topple over due to their height and heavy clusters of flowers - keep them upright with stakes or twine. Most fragrant & popular - Ziva. Least fragrant – Inbal.



Inbal
Bulb Size: bulbs/tray
 16/17 cm 350
 17/+ cm 300
 Use: late pot



Erlicheer
Bulb Size: bulbs/tray
 16/17 cm 350
 17/+ cm 300
 Use: all purpose



Winter Sun
Bulb Size: bulbs/tray
 16/17 cm 350
 17/+ cm 300
 Use: all purpose



Nir
Bulb Size: bulbs/tray
 16/17 cm 350
 17/+ cm 300
 Use: all purpose



Ziva (Paperwhite)
Bulb Size: bulbs/tray bulbs/bin bulb/bag
 15/16 cm 400 50 5
 16/17 cm 350
 17/+ 300
 Use: all purpose

HYACINTHS



Mid Season

Bulb Size

16/17 cm

Retail Packages

4 bulbs per bag

Bin Display

50 bulbs per box

Bulk

250 bulbs per tray

Hyacinths produce beautiful, immensely fragrant blooms, and are ideally suited for beds, borders, containers and the landscape. Make a splendid combo with early-mid season tulips. Our assortment encompasses all available colors, and most varieties are grown on our family farm. Perennial, and not particularly attractive to deer and rodents.



Aqua
Height 10"
50/bin

4/bag
Size 16/17 cm
250/tray



Rainbow Mix
Height 10"
50/bin

4/bag
Size 16/17 cm
250/tray



Mix the Blues
Height 10"
50/bin

4/bag
Size 16/17 cm
250/tray



Mix the Pinks
Height 10"
50/bin

4/bag
Size 16/17 cm
250/tray



Gypsy Queen
Height 10"
50/bin

4/bag
Size 16/17 cm
250/tray



Pink Surprise
Height 10"
50/bin

4/bag
Size 16/17 cm
250/tray



Cotton Candy Mix
Height 10"
50/bin

4/bag
Size 16/17 cm
250/tray



Gypsy Princess 4/bag
 Height 10" Size 16/17 cm
 50/bin 250/tray



Jan Bos 4/bag
 Height 10" Size 16/17 cm
 50/bin 250/tray



White Pearl 4/bag
 Height 10" Size 16/17 cm
 50/bin 250/tray



Pink Pearl 4/bag
 Height 10" Size 16/17 cm
 50/bin 250/tray



Miss Saigon 4/bag
 Height 10" Size 16/17 cm
 50/bin 250/tray



Blue Star 4/bag
 Height 10" Size 16/17 cm
 50/bin 250/tray

CROCUS



Small Flowering

Early Spring

Bulb Size

6/+ cm

Retail Packages

25 bulbs per bag

Bin Display

250 bulbs per box

Small Flowering (Botanical) crocus are amongst the earliest spring bulbs to bloom.

This group consists of various subtypes, crossbred from the original wild crocus.

Our assortment includes the wildly popular fall flowering variety *Sativus* (Saffron) and the only true orange (Orange Monarch).



Ruby Giant (Tommasinianus)
Height 4" Size 6/+ cm
25/bag 250/bin



Dorothy (Chrysanthus)
Height 4" Size 6/+ cm
25/bag 250/bin



Sativus (Saffron) 25/bag
Height 4" Size 8/9 cm
200/bin 1250/tray

Orange Monarch (Balansae)
Height 4" Size 6/+ cm
25/bag 250/bin



Botanical Mixture (Chrysanthus)
Height 4" Size 6/+ cm
25/bag 250/bin



Blue Pearl (Chrysanthus)
Height 4" Size 6/+ cm
25/bag 250/bin



Ard Schenk (Chrysanthus)
Height 4" Size 6/+ cm
25/bag 250/bin



Tricolor (Sieberi)
Height 4" Size 6/+ cm
25/bag 250/bin

CROCUS



Large Flowering

Early Spring

Bulb Size

8/9 cm

Retail Packages

25 bulbs per bag

Bin Display

200 bulbs per box

Bulk

1,750 bulbs per tray

Large Flowering (Vernus) crocus excel in borders, containers, the landscape, lawns & rock gardens. Provided the foliage is allowed to die down, they will return for many years. Make a great combo with Botanical tulips (page 10).



Flower Record & Showwinner



Flower Record 25/bag
Height 5" Size 8/9 cm
200/bin 1750/tray



Golden Yellow 25/bag
Height 5" Size 8/9 cm
200/bin 1750/tray



Peter Pan 25/bag
Height 5" Size 8/9 cm
200/bin 1750/tray



Large Flowering Mix 25/bag
Height 5" Size 8/9 cm
200/bin 1750/tray



Blue Moon Mix 25/bag
Height 5" Size 8/9 cm
200/bin 1750/tray



Pickwick 25/bag
Height 5" Size 8/9 cm
200/bin 1750/tray

MUSCARI



Mid Season

Bulb Size

varies

Retail Packages

20 bulbs per bag

Bin Display

250 bulbs per box

Bulk

1,250 or 1,750 bulbs per tray

Muscari (Grape Hyacinths) are a great choice for landscaping and containers.

Their striking blue colors liven up spring borders, and they combine perfectly with mid-season tulips. Perennial, and not particularly attractive to deer and rodents.

The best choice for mass plantings is Armeniacum.



Mondial (page 14)
& Armeniacum



Best Seller

Armeniacum 20/bag
Height 8" Size 9/10 cm
250/bin 1250/tray



Latifolium 20/bag
Height 10" Size 6+ cm
250/bin



Vallerie Finnis 20/bag
Height 8" Size 8/9 cm
250/bin



Fantasy Creation 20/bag
Height 10" Size 9/10 cm
250/bin



Muscari Mix 20/bag
Height 8" Size 8/9 cm
250/bin 1750/tray



White Pearl
Height 8"
20/bag

Size 7/8 cm
250/bin



Atlantic
Height 8"
20/bag

Size 9/10 cm
250/bin



Blue Magic
Height 8"
20/bag

Size 9/10 cm
250/bin



Paradoxum (Bellevalia Pycnantha)
Height 12"
20/bag

Size 6+ cm
250/bin

ALLIUM



Late Spring

Bulb Size varies

Retail Packages

1, 5, or 25 bulbs per bag

Bin Display

20, 100 or 250 bulbs per box

Bulk

100 bulbs per tray

50 bulbs per tray XXL

Alliums (Ornamental Onions) are the latest spring bulbs to bloom, and combine perfectly with perennials. Planted in rich, well-drained soil, they naturalize beautifully. The scent deters deer and rodents. Giant alliums in particular make for a breathtaking show in the landscape, and have surged in popularity over the last few years! Please note that due to state agricultural restrictions, we are not permitted to ship Allium bulbs to Idaho, or to the following five counties in the State of Washington: Adams, Benton, Franklin, Grant and Klickitat.



Ambassador XXL



Pinball Wizard
Height 40"
20/bin

1/bag
Size 20/+ cm
100/tray



Giant Mixture
Height 40"
20/bin

1/bag
Size 20/+ cm
100/tray



Gladiator
Height 40"
20/bin

1/bag
Size 20/+ cm
100/tray



Mount Everest
Height 40"
20/bin

1/bag
Size 20/+ cm
100/tray



Globemaster
Height 40"
20/bin

1/bag
Size 20/+ cm
100/tray



Ambassador	1/bag	Ambassador XXL	
Height 40"	Size 20/+ cm	Height 40"	Size 32/+ cm
20/bin	100/tray		50/tray



Giant blooms on short stems

Universe
Height 20"
20/bin

1/bag
Size 20/+ cm
100/tray



Albopilosum

Christophii
Height 14" Size 12/+ cm
5/bag 100/bin



Arctic Snow
Height 16" Size 12/+ cm
5/bag 100/bin



Bulgaricum

Nectaroscordum
Height 36" Size 10/+ cm
5/bag 100/bin



Schubertii
Height 16" Size 12/+ cm
5/bag 100/bin



Purple Sensation
 Height 36"
 100/bin

5/bag
 Size 12/+ cm
 500/tray



Red Mohican
 Height 40"
 5/bag

Size 10/+ cm
 100/bin



Multibulbosum

Nigrum
 Height 36"
 5/bag

Size 12/+ cm
 100/bin



Purple Rain
 Height 36"
 100/bin

5/bag
 Size 10/+ cm
 500/tray



Ping Pong
Height 40"
25/bag

Size 6/+ cm
250/bin



Azureum
Height 20"
25/bag

Size 5/+ cm
250/bin



Three-cornered Leek



Cowanii
Height 16"
25/bag

Size 5/+ cm
250/bin



Drumsticks

Sphaerocephalon
Height 24"
25/bag

Size 5/+ cm
250/bin

Triquetrum
Height 20"
25/bag

Size 4/5 cm
250/bin



Atropurpureum
Height 24"
25/bag

Size 7/+ cm
250/bin



Moly
Height 16"
25/bag

Size 5/+ cm
250/bin

SPECIALTIES



Early, Mid & Late Spring

Bulb Size

varies

Retail Packages

varies

Bin Display

20, 50 or 250 bulbs per box

Bulk

100 or 250 bulbs per tray

NEW



Mid Season

Fritillaria Persica Alba 1/bag
Height 38" Size 20/+ cm
20/bin 100/tray



Mid Season

Fritillaria Imperialis Rubra Maxima 1/bag
Height 36" Size 20/+ cm
20/bin 100/tray



Mid Season

Fritillaria Persica 1/bag
Height 40" Size 20/+ cm
20/bin 100/tray



Mid Season

Fritillaria Imperialis Lutea Maxima 1/bag
Height 36" Size 20/+ cm
20/bin 100/tray



Mid Season

Fritillaria Meleagris Mix
Height 8" Size 7/+ cm
20/bag 250/bin



Late Spring

Camassia Esculenta (Quamash)
Height 26" Size 6/+ cm
25/bag 250/bin



Mid Season

Anemone Blanda Mixture
Height 4" Size 5/+ cm
15/bag 250/bin



Late Spring

Hyacinthoides Hispanica White
Height 10" Size 8/10 cm
10/bag 250/bin



Mid Season

Ipheion Jessie
Height 4" Size 4/+ cm
20/bag 250/bin



Late Spring

Hyacinthoides Hispanica Mix
Height 10" Size 8/10 cm
10/bag 250/bin



Late Spring

Hyacinthoides Hispanica Pink
Height 10" Size 8/10 cm
10/bag 250/bin



Late Spring

Hyacinthoides Hispanica Blue
Height 10" Size 8/10 cm
10/bag 250/bin



Late Spring

Camassia Leichtlinii Alba 5/bag
Height 32" Size 14/16 cm
50/bin 250/tray



Late Spring

Camassia Leichtlinii Caerulea 5/bag
Height 32" Size 14/16 cm
50/bin 250/tray



Early Spring

Eranthis Cilicica (Winter Aconite)
Height 3" Size 4/+ cm
25/bag 250/bin



Early Spring

Chionodoxa Luciliae Alba
Height 4" Size 5/+ cm
25/bag 250/bin



Late Spring

Anemone Coronaria Mix De Caen
Height 10" Size 8/+ cm
15/bag 250/bin



Early Spring

Chionodoxa Luciliae (Glory of the Snow)
Height 4" Size 5/+ cm
25/bag 250/bin

NEW



Early Spring

Iris Katherine's Gold
Height 6"

Size 6/+ cm
250/bin



Early Spring

Leucojum Aestivum
Height 12"

Size 8/10 cm
250/bin



Early Spring

Iris Harmony
Height 6"

Size 6/+ cm
250/bin



Early Spring

Iris Katherine Hodgkin
Height 6"

Size 6/+ cm
250/bin



Early Spring

Puschkinia Libanotica
Height 4"

Size 5/+ cm
250/bin



Early Spring

Scilla Siberica
Height 6"

Size 8/+ cm
250/bin



Early Spring

Scilla Siberica Alba
Height 6"

Size 8/+ cm
250/bin



Mid Season

Scilla Litardierei (Amethystina)
Height 8"

Size 6/+ cm
250/bin

SPECIALTIES

Late Spring, Early & Late Summer



Bulk

Bulb Size

varies

Retail Packages

varies

Bin Display

50, 100 or 500 bulbs per box

Only available in the USA!



Amaryllis Belladonna

Height 30"
100/bin

Size 16/18 cm
Late Spring



Calla Aethiopica

Height 30"
100/bin

Size 14/16 cm
Early Summer



Lycoris Squamigera

Height 24"
50/bin

Size 12/14 cm
Late Summer



Lycoris Aurea

Height 35"
50/bin

Size 12/14 cm
Late Summer



Leucojum Gravetye Giant

Height 20"
100/bin

Size 12/13 cm
Late Spring



available in all colors of
the Aviv and Tecolote series

Ranunculus
Height 16-20"

Size 7/+ cm

**Aviv
Tecolote**

500/bag
100/bag
Early Summer



Lycoris Radiata

Height 24"
100/bin

Size 8/10 cm
Late Summer



Ornithogalum Arabicum

Height 18"
100/bin

Size 14/15 cm
Late Spring



also white &
orange

Ornithogalum Dubium

Height 16"
250/bin

Size 5/6 cm
Late Spring



Scilla Peruviana

Height 14"
100/bin

Size 14/16 cm
Late Spring

IRIS



Bearded (Germanica)

Summer

Root Size

#1

Bin Display

15 bulbs per box

Bulk

100 bulbs per tray

Delivery

August – September

Bearded Iris are not actually bulbs, but rhizomes. These stunning plants feature distinctive fuzzy beards upon their lower petals, or falls. Unlike most spring bulbs and tubers, Bearded Iris do not need a cold period to produce flowers, making them ideally suited for areas with mild winters. Very drought tolerant and love a sunny position. Well drained soil is critical, and planting no later than September is recommended for best results. Hardy in zones 3-10, and deer and rodent resistant. USA grown! Color picture tags included with each variety.

Only available in the USA!



Better Together
Height 40" Mid



All Night Long
Height 31" Late



Batik
Height 24" Early



Cantina
Height 35" Mid



Blood Moon
Height 38" Mid to Late



Care to Dance
Height 35" Mid



Cherry Blossom Song
Height 36" Mid



Clarence
Height 35" Early



Copper Classic
Height 35" Late



Devil's Punchbowl
Height 35" Early



Dracula's Kiss
Height 36" Early to Mid



Easter Candy
Height 37" Early/Late



Easter Charm
Height 30" Early to Mid



Feed Back
Height 36" Early/Mid



French Cancan
Height 33" Mid to Late



Grand Canyon Sunset
Height 35" Mid



Harvest of Memories
Height 38" Mid



NEW

fragrant

Champagne and Strawberries
Height 38" Mid



fragrant
re-bloom

Orange Harvest
Height 32" Early/Mid



NEW

fragrant

Honey Comb
Height 34" Early to Mid



OUI Madame
Height 38" Early to Mid



NEW

Idle Rich
Height 36" Mid



fragrant
re-bloom

Immortality
Height 29" Mid



NEW

fragrant

Nice Job
Height 32" Mid to Late



Over Alaska
Height 36" Early to Mid



re-bloom

Pagan Dance
Height 30" Early to Late



fragrant

Petalpalooza
Height 34" Mid to Late



fragrant
re-bloom

Pink Attraction
Height 30" Early to Mid



re-bloom

Presby's Crown Jewel
Height 36" Early to Mid



Rio Rojo
Height 37" Early to Mid



fragrant
re-bloom

Rosalie Figge
Height 39" Mid



NEW

fragrant

Sunrise Splendor
Height 35" Mid



Sun Devil
Height 40" Mid



fragrant
re-bloom

Victoria Falls
Height 40" Early to Late



fragrant
re-bloom

Struck Twice
Height 37" Early to Late



NEW

fragrant

Grays Peak
Height 42" Mid

Store Collections

NEW

Unit #600 Complete Store Collection

400 pre-packs on a re-usable wooden display rack with header card

Unit #699 Refill Store Collection

400 pre-packs
(rack and header card not included)

Unit #650 Refillable Rack + header card

Built to last, use it again every season and fill it up by picking from our extensive pre-pack assortment. Fits 40 pre-pack display boxes. (pre-packs not included)

Please order before July 15th.

Contents unit #600 Complete Store Collection

Specialty bulbs

10 pre-packs each of:

Muscari Armeniacum	Allium Mount Everest
Muscari Mixture	Leucojum Aestivum
Hyacinthoides Mixture	Daffodil Thalia
Scilla Siberica	Daffodil Tête à Tête
Allium Gladiator	Crocus Large Flowering Mix
Allium Purple Sensation	Crocus Flower Record

Hyacinths

10 pre-packs each of:

White Pearl	Pink Pearl
Blue Star	Miss Saigon

Tulips

10 pre-packs each of:

Red Emperor	Strong Gold
Exotic Emperor	Flaming Flag
Golden Emperor	Sunrise Dynasty
Wedding Dress	Strong Love
Banja Luka	Yellow Pomponette
Novi Sun	Double Gudoshnik
Red Impression	Foxtrot
Pink Impression	Double Negrita

Daffodils

10 pre-packs each of:

Dutch Master	Red Devon
Mount Hood	Ice Follies
Pink Charm	Tahiti
Goblet	Poeticus Recurvus



Collection #600

Easy to order, easy to sell!

Let us take the guesswork out of fall bulb planning. This collection includes 40 of our best selling varieties.

Sustainable

Our new custom wooden display is sturdy, easy to move and sustainable, as it can be re-used many times.

Rack size: 48 x 16 x 75 inches

A large full color header card is included.

Please order before July 15th.

XL-BULBS



Our vintage Dutch wooden crates are filled to the brim with the most popular XL bulbs we harvest! Only certain varieties produce XL bulbs, and these selections are all grown on our family farms in Holland. The exceptional size and quality of these bulbs will set you apart from big box competition. The lids of these crates flip up to display a large, full color poster. Free paper bags are included.



Extra Large Daffodils



#337 Dutch Master
Bulb Size 16/+ cm
150 bulbs/crate



#335 Mount Hood
Bulb Size 16/+ cm
150 bulbs/crate



#334 Goblet
Bulb Size 16/+ cm
150 bulbs/crate

Extra Large Tulips



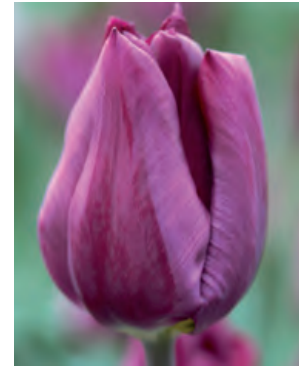
#322 Ad Rem
Bulb Size 14/+ cm
300 bulbs/crate



#325 Golden Parade
Bulb Size 14/+ cm
300 bulbs/crate



#324 Daydream
Bulb Size 14/+ cm
300 bulbs/crate



#327 Purple Lady
Bulb Size 14/+ cm
300 bulbs/crate



#326 Red Impression
Bulb Size 14/+ cm
300 bulbs/crate



#320 Wedding Dress
Bulb Size 14/+ cm
300 bulbs/crate



#321 Pink Impression
Bulb Size 14/+ cm
300 bulbs/crate

Extra Large Alliums



#350 Ambassador
Bulb Size 28/+ cm
50 bulbs/crate

VALUE PACKS



Top size bulbs, more bulbs per package.
Competitive price points

Our retail program is developed exclusively for Independent Garden Centers, and our Value Pack program is designed to deliver size and quality that big box competition can't, at a competitive price point. Great items for homeowners and landscape professionals alike, only our best-selling varieties are selected for this program.



Tulips Single Colors



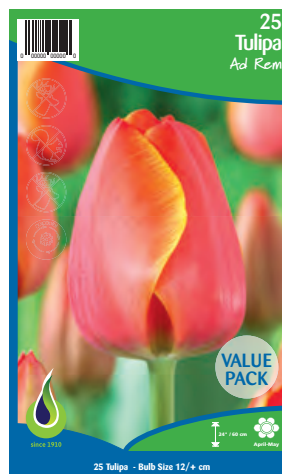
#127 Negrita
Bulb Size 12/+ cm
25 bulbs / 16 packages



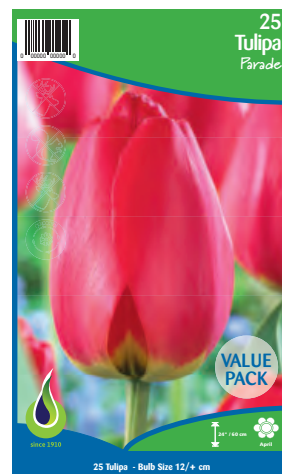
#125 Big Love
Bulb Size 12/+ cm
25 bulbs / 16 packages



#118 Golden Parade
Bulb Size 12/+ cm
25 bulbs / 16 packages



#123 Ad Rem
Bulb Size 12/+ cm
25 bulbs / 16 packages



#122 Parade
Bulb Size 12/+ cm
25 bulbs / 16 packages



#130 Wedding Dress
Bulb Size 12/+ cm
25 bulbs / 16 packages

Tulip Mixtures



#113 Darwin Hybrid Mix
Bulb Size 12/+ cm
25 bulbs / 16 packages



#112 Holiday Mix
Bulb Size 12/+ cm
25 bulbs / 16 packages



#120 Impression Mix
Bulb Size 12/+ cm
25 bulbs / 16 packages



#115 Flaming Purple Mix
Bulb Size 12/+ cm
25 bulbs / 16 packages



#117 Mondriaan Mix
Bulb Size 12/+ cm
25 bulbs / 16 packages



#126 Rembrandt Mix
Bulb Size 12/+ cm
25 bulbs / 16 packages



#110 Romantic Mix
Bulb Size 12/+ cm
25 bulbs / 16 packages



#116 Black & White Cookie Mix
Bulb Size 12/+ cm
25 bulbs / 16 packages

Long-lasting Tulip Mixtures



#111 Blue Ribbon Mix
Bulb Size 12/+ cm
25 bulbs / 16 packages



#114 Fire Glow Mix
Bulb Size 12/+ cm
25 bulbs / 16 packages



#124 Sweet Pink Mix
Bulb Size 12/+ cm
25 bulbs / 16 packages



Daffodils



#155 Botanical Mix
Bulb Size 12/14 cm
25 bulbs / 12 packages



#141 Dutch Master
Bulb Size 12/14 cm
25 bulbs / 12 packages



#142 Ice Follies
Bulb Size 12/14 cm
25 bulbs / 12 packages



#143 Large Flowering Mix
Bulb Size 12/14 cm
25 bulbs / 12 packages

Crocus



#160 Crocus Large Flowering Mix
Bulb Size 8/9 cm
50 bulbs / 30 packages



#144 Pink Charm
Bulb Size 12/14 cm
25 bulbs / 12 packages



#150 Tête à Tête
Bulb Size 12/14 cm
25 bulbs / 12 packages

Hyacinth Mixtures



#100 Rainbow Mix
Bulb Size 14/15 cm
10 bulbs / 16 packages



#101 The Blues Mix
Bulb Size 14/15 cm
10 bulbs / 16 packages



#102 The Pinks Mix
Bulb Size 14/15 cm
10 bulbs / 16 packages

JUMBO LANDSCAPE BAGS



Popular with both homeowners and landscape professionals. No less than 50 bulbs per netlon bag, with a large colorful label that can be used as a planting tag.

The solid and re-usable wooden pallet display contains 90 jumbo bags.

These competitively priced jumbo bags can also be ordered in refill multiples of 8.



Colorful label that can be used as a planting tag!

700 Wooden pallet display



Container Refills



Container Refills

#701 8 Jumbo Bags

Daffodils Dutch Master

50/bag 12/14 cm

#702 8 Jumbo Bags

Daffodils Mixed Colors

50/bag 12/14 cm

#703 8 Jumbo Bags

Friends & Family Mix

50/bag 12/14 cm

Bulb size 12/14 cm

Early to Mid Season

Contents 90 bags:

30 Jumbo Bags Daffodils Dutch Master 50/bag

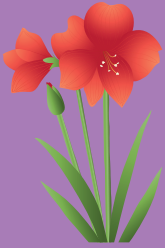
30 Jumbo Bags Daffodils Mixed Colors 50/bag

30 Jumbo Bags Friends & Family Mix 50/bag



AMARYLLIS

Indoors Winter



Dutch

Bulb Size

36/38, 34/36 or 30/32 cm

Display box

10 bulbs per box

Bulb Size

XXL-Bulbs 38/+ cm

Display box

8 bulbs per box

Our jumbo size amaryllis bulbs are the perfect gift for the holiday season! They are easy to grow indoors. The magnificent blooms will appear approximately 12 weeks after planting. We only supply the largest bulbs available in Holland, which will produce 2-3 stems per bulb and 4 blooms per stem.

Pick and choose your own assortment from our wide range of colors and types. Each bulb is individually labeled with a color tag and packed in a display box with colorful poster.

Amaryllis bulbs can be planted outdoors in zones 9 and 10.

They need plenty of sun and well drained soil, as well as bottom heat to kickstart growth.



Apple Blossom

Size 36/38 cm
Size 38/+ cm

10/box
8/box



Pink Rival

Size 36/38 cm

10/box

Delivery starts October 1st



Picotee

Size 34/36 cm

10/box



Terracotta Star

Size 36/38 cm

10/box



Rilona
Size 36/38 cm 10/box



Candy Queen
Size 34/36 cm 10/box



Pink Surprise
Size 36/38 cm 10/box



Christmas Gift
Size 36/38 cm 10/box
Size 38/+ cm 8/box



Naranja
Size 36/38 cm 10/box



Gervase
Size 34/36 cm 10/box



Luna
Size 36/38 cm 10/box



Samba
Size 36/38 cm 10/box



Magic Green & Red Lion



Carmen
Size 36/38 cm 10/box
Size 38/+ cm 8/box



Stardust
Size 36/38 cm 10/box



Barbados
Size 36/38 cm 10/box



Magical Touch
Size 36/38 cm

10/box



Magic Green
Size 36/38 cm

10/box



Minerva

Size 36/38 cm

10/box



Red Lion

Size 36/38 cm
Size 38/+ cm

10/box
8/box



Spartacus

Size 36/38 cm

10/box



Evergreen
Size 30/32 cm

10/box



Exotic Star
Size 30/32 cm

10/box



Show Master
Size 36/38 cm

10/box



Dancing Queen
Size 34/36 cm

10/box



Flamed Amadeus
Size 34/36 cm

10/box



Striped Amadeus
Size 34/36 cm

10/box



Giant Amadeus
Size 34/36 cm

10/box



Double Dream
Size 34/36 cm

10/box



White Amadeus
Size 34/36 cm

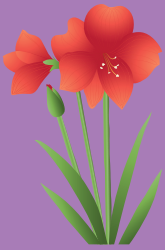
10/box



Cherry Nymph
Size 34/36 cm

10/box

AMARYLLIS



Peru

Forcing time:
4-6 weeks to ready-to-sell-stage

Growing temperature:
72 degrees F

Light intensity:
medium - high

Bulb Size
28/30 cm, 36/38 cm

Bulk
25 bulbs per tray,
16 bulbs per tray

Amaryllis tags included

Only Southern Hemisphere Amaryllis guarantee Christmas blooms. We import these bulbs direct from one of the world's finest growers for their impeccable quality and growing practices, as well as the reliable bloom times of Peruvian bulbs. Shipping begins in late September to ensure that our customers have ready-to-sell pots available throughout the holiday season. Ideal temperature for rooting is 70-77 degrees F.

Available in the USA only.

Please note these bulbs are suitable for greenhouse production only, and will sprout aggressively if used for retail.



Alasca
Size 28/30 cm 25/tray



Amadeus
Size 28/30 cm 25/tray
Size 36/38 cm 16/tray



Mandela
Size 28/30 cm 25/tray
Size 36/38 cm 16/tray



Bolero
Size 28/30 cm 25/tray
Size 36/38 cm 16/tray



Blossom Peacock
Size 28/30 cm 25/tray



Double King
Size 28/30 cm 25/tray
Size 36/38 cm 16/tray



Lemon Star
Size 28/30 cm 25/tray
Size 36/38 cm 16/tray



Denver
Size 28/30 cm 25/tray
Size 36/38 cm 16/tray



Minerva
Size 28/30 cm 25/tray
Size 36/38 cm 16/tray



Cape Horn
Size 28/30 cm 25/tray
Size 36/38 cm 16/tray



Olaf
Size 28/30 cm 25/tray
Size 36/38 cm 16/tray



Picasso
Size 28/30 cm 25/tray



Revelation
Size 28/30 cm 25/tray
Size 36/38 cm 16/tray



Cherry Blossom
Size 28/30 cm 25/tray
Size 36/38 cm 16/tray



Sovereign
Size 28/30 cm 25/tray
Size 36/38 cm 16/tray



Spartacus
Size 28/30 cm 25/tray
Size 36/38 cm 16/tray

AMARYLLIS

Easy care,
no water needed!



Wax Bulbs

Bulb Size
32/34 cm
Display box
10 bulbs per box

Waxed Amaryllis are completely self-sustaining, and require no soil or water to bloom! All bulbs are waxed by hand at our own farms in the Netherlands. Beautiful items for retail, e-commerce or client gifts. We use Dutch bulbs only, which are ideally suited for retail and resistant to sprouting. These large 32/34 cm bulbs produce 2-3 stems per bulb and 4 blooms per stem. Display case, color tags and metal support rings are included.



Shipping begins in late October.

Please note that Dutch amaryllis are unlikely to flower for Christmas.

Available in the U.S.A. only!

Classic Collection



Classic Red RED FLOWERS
Size 32/34 cm 10/box



Classic Green RED FLOWERS
Size 32/34 cm 10/box



Classic White WHITE FLOWERS
Size 32/34 cm 10/box



Classic Hot Pink WHITE FLOWERS
Size 32/34 cm 10/box

Shiny Collection



Shiny Silver WHITE FLOWERS
Size 32/34 cm 10/box



Shiny Gold WHITE FLOWERS
Size 32/34 cm 10/box



Shiny Copper RED FLOWERS
Size 32/34 cm 10/box



Shiny Red RED FLOWERS
Size 32/34 cm 10/box



Shiny Green RED FLOWERS
Size 32/34 cm 10/box



Glitter Collection



Shipping starts
late October!



Glitter Gold WHITE FLOWERS
Size 32/34 cm 10/box



Classic Green RED FLOWERS
Size 32/34 cm 10/box



Glitter Purple WHITE FLOWERS
Size 32/34 cm 10/box



Glitter White WHITE FLOWERS
Size 32/34 cm 10/box



Glitter Red RED FLOWERS
Size 32/34 cm 10/box



Glitter Copper RED FLOWERS
Size 32/34 cm 10/box

Order your bulbs at:

Vandenberg Bulb Inc.
P.O. Box 468
Howell MI 48844

Tel (toll free):
1-800-955-3813
1-517-546-3813
Fax: 1-517-546-3429

orders@vandenberghort.com
www.vandenberghort.com

**Vandenberg
Hort** Inc.

Wholesale Bulbs • Perennials • Plants • Soils • Supplies

Suppliers of spring!

Flower bulbs are not just our occupation, they are our family passion. For nearly 115 years, we have lived and worked amongst the tulip fields of the Bollenstreek (Dutch Bulb District).

Discover the industry's largest assortment of Fall Bulbs; tulips, daffodils, hyacinths, alliums, amaryllis & so much more!

