

SPRING

Flowering Bulbs 2026

Direct from The Netherlands

Grown on our family farm in the Netherlands and shipped directly to you. The most extensive bulb assortment in North America—your source for top-size bulbs, superior quality, proven reliability, and exceptional service.

Fall Wholesale
Catalog

**Vandenberg
Hort**

Vandenberg Hort

Wholesale Bulbs 🌱 Perennials 🌱 Plants 🌱 Soils 🌱 Supplies

Vandenberg Hort Company is a wholesaler of horticultural products that supplies Greenhouses, Garden Centers, Nurseries and Landscapers. Supplying the industry with Flower Bulbs, Perennials, Fruit Plants, Started Greenhouse Plants and a wide range of Greenhouse and Nursery supplies from our 25,000 square foot warehouse facility. We are based out of Howell Michigan which is conveniently located within easy driving distance of many of the state's largest cities! We have trucks on the road all year round to make deliveries to you if minimums are met.

Family business

Vandenberg Horticulture has been a family owned and operated business for several generations! Henry Vandenberg began traveling to the U.S shortly after the war in 1946. In 1953 he married Joanne and moved to the U.S permanently to start his family and Vandenberg Bulb Company in Howell, Michigan. They had a family of 4, 2 sons and 2 daughters. Theirs sons' Jack and John worked with the company throughout high school and joined the business full time in 1974 and 1975. The company changed its name in 2023 to Vandenberg Horticulture Inc. to better relate to the business model of supplying more than just "bulbs".

The company continues to be run by Tim Vandenberg and many long-term employees. Vandenberg Hort is truly a "family" owned and operated business.

Growing company

Vandenberg Hort Company has grown and will continue to grow through sound business morals and ethics. We are dedicated to being a leading horticultural entity supplying the Great Lakes region and beyond. Vandenberg Hort Company will continue to strive to be your preferred supplier and nurture the needs of your growing company.

Contact

If you have any questions feel free to call us at 1-800-955-3813, or e-mail, orders@vandenberghort.com, also visit us at www.vandenberghort.com. We are looking forward to being your preferred broker for all your horticultural needs.

Thank you
The Vandenberg Team



Jack Vandenberg
jackv@vandenberghort.com



John Vandenberg
johnv@vandenberghort.com

Office Staff – left to right

Shellie Noonchester
Tonya Olrich
Tim Vandenberg
Tracy Stapleton
Craig Boss
Laura Finley

Meet our sales staff



Dave Tice
dave@vandenberghort.com



Dan Sparks-Jackson
dan@vandenberghort.com



Ryan Stehouwer
ryan@vandenberghort.com



Bulbs directly from our Dutch farm

To Order Bulbs

Orders may be submitted by phone, e-mail, through your regional sales representative, or online at www.adrbulbs.com. Please note that we are a wholesale-only supplier and do not sell directly to the public.

Order Deadline and Availability

All orders received before **July 15th** will be shipped directly from Holland, with delivery beginning in early September. Orders received after this date are subject to availability. Approximately 75% of our program is stocked each fall at our Chester, New York warehouse.

If you have any questions or require a quotation for bulb varieties not listed, please contact us. We will be pleased to assist you.

Customers in Canada

Orders are shipped directly from our farm in Holland. Due to shipping constraints from the United States to Canada, we are unable to supply product from our New York warehouse. Please contact us at info@ruigrokflowerbulbs.com for availability and shipping options to Canada.

Fall Shipping in the USA

Bulb orders placed before the deadline begin shipping in early September. Orders placed after the deadline begin shipping in mid-to-late September.

Guarantee

We fully guarantee that our bulbs are viable, healthy, and free from injurious insects and disease upon receipt. All bulbs are grown from cultivated stock (never harvested from the wild) and are inspected by the United States, Canadian, and Dutch Departments of Agriculture.

No warranty is provided for product viability beyond 10 days after receipt. We cannot guarantee survival after this period due to factors beyond our control, including improper storage or planting, extreme weather, or poor soil conditions.

Bulb Treatment

Our bulbs are not treated with neonicotinoids. Pesticide use is strictly regulated in the Netherlands, and extensive research has been conducted on this subject. A copy of the study results, published by the Royal Dutch Trade Association for Flower Bulbs and Nursery Stock, is available on our website.



Terms and Conditions

A complete copy of our terms and conditions of sale, along with our freight schedule, can be found on our website or in the enclosed order form.

Index page

About Us	2-3
Our Clientele	4-5
Planting and Care	6
Packaging	7
Program Overview	107

Main Program

• Tulips	8-41
• Tulip Mixtures	42-55
• Daffodil Mixtures	56-59
• Daffodils	60-73
• Hyacinths	74-75
• Crocus	76-77
• Muscari	78
• Alliums	79-82
• Specialty Bulbs	83-86
• Bulk Specialties	87
• Bearded Iris	88-89

Retail Collections

• Store Collection	90
• XL Bulbs	91
• Value Packs	92-94
• Jumbo Landscape Bags	95

Amaryllis & Paperwhites

• Bulk Paperwhites	96
• Dutch Amaryllis	97-101
• Peruvian Amaryllis	102-103
• Counter Collection and Amaryllis Kits	104
• Waxed Amaryllis	105-106

Ruigrok Flowerbulbs

Since 1910

It is with pride that we present our Fall Wholesale Catalog for 2026-2027. With 105 pages of spring flowering bulbs, we continue to offer the largest assortment available in North America.

Most of our bulbs are grown, packed, and shipped by our family farm, Ruigrok Flowerbulbs, located in De Zilk, at the heart of the Dutch bulb district in the Netherlands.

The Ruigrok family is deeply rooted in the Dutch flower bulb tradition. For five generations, we have combined craftsmanship, a passion for the land, and innovative growing techniques to produce bulbs of the highest quality. Today, we cultivate over 350 acres of tulips, hyacinths, and daffodils. Bulbs are not only our livelihood—they are our family's passion. Each day we work to grow strong, healthy, sustainable, and beautifully blooming bulbs.

Additional varieties that complete our extensive assortment are sourced from the finest partner growers in the Netherlands and beyond.

To share the joy of spring flowers, we annually welcome a growing number of visitors to our show garden, **The Tulip Barn**, in Hillegom. Here we plant millions of tulips for visitors from around the world to enjoy and capture that perfect photo among the blooms. The Tulip Barn also serves as our test garden, where we trial new varieties and mixtures for our wholesale customers.

Every mixture in this catalog has been trialed and showcased at our own tulip festival to ensure stunning results for you and your customers.

We hope this catalog reflects both the beauty of our spring flowering bulbs and the passion we have for our trade.

With greetings from the Netherlands,

The Ruigrok Family





High quality flower bulbs,
grown on our family farm!

Our business is bulbs

Bulbs for Retail

We specialize in retail packaging for independent retailers.

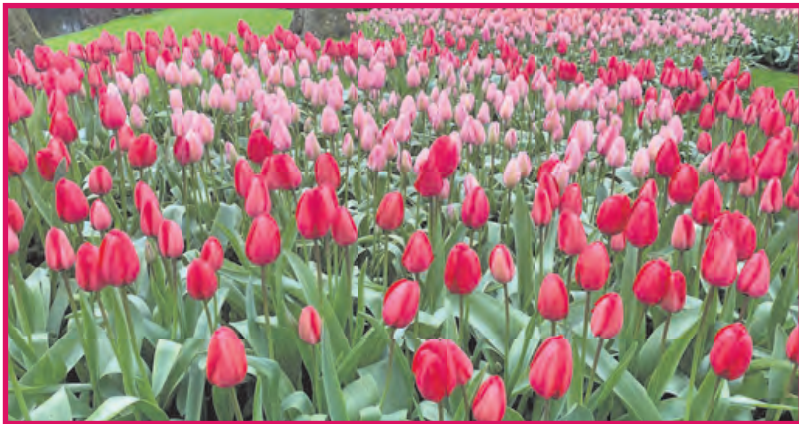
Elevate your offerings and let us help set you apart from big box competitors. Our retail packaging features only top-size bulbs, ensuring superior quality and performance. With clean, colorful, and distinctive packaging, you can captivate customers and create a unique identity. Unlike other suppliers, we prioritize independent garden centers, florists, and hardware stores throughout the USA and Canada. We do not sell to big-box stores.

Customize your program to your specifications by ordering individual varieties in small quantities, or choose our best seller display. Let us help you compose your retail selection and delight customers with bulbs of exceptional quality that produce outstanding blooms.



Bulbs for Landscaping

Landscape supply is the core of our business.



Since 1946, we have supplied premium Dutch bulbs to landscape professionals in the USA and Canada. Our high-quality bulbs are the preferred choice for public and botanical gardens, municipalities, cemeteries, golf courses, universities, and more. Enhance your projects with the industry's best bulbs and create stunning spring displays. Our U.S. warehouse carries the largest and most comprehensive inventory in the industry and offers same day shipment. For advice on your project, we are only a phone call away.

Bulbs for Parks and Gardens

Your partner for a stunning spring display.

Spring is the perfect time to escape city life and enjoy the beauty of blooming bulbs in public parks and gardens. Create vivid displays with special cultivars of daffodils, hyacinths, and tulips, or choose from our mixtures designed for outstanding and long lasting spring color.

Our premium bulbs are supplied to public gardens, parks, and municipalities across the USA and Canada. As trusted partners, we maintain long-term relationships with landscape designers, botanists, and municipal buyers in every region. Our extensive assortment, top size bulbs, premium quality, and tailored advice are the key benefits we provide.



We have the flower bulb selection for every business



Bulbs for Growers

Let us help you compose your flower program for greenhouse or outdoor production.

Both greenhouse and outdoor cut flower growers favor our extensive assortment. We aim to build long term relationships with our customers.

Our experienced sales team will gladly advise you through the process of greenhouse forcing for pots and cuts. They can assist in selecting optimal varieties for Valentine's, Easter, or Mother's Day crops. Pre-cooling services are available.

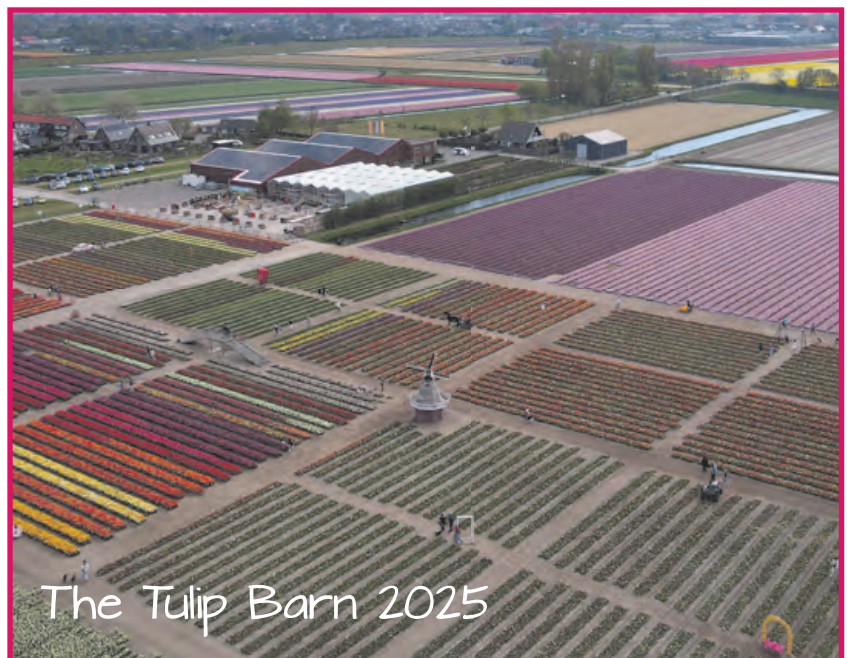


Bulbs for U-Pick Farms and Tulip Festivals

Let your U-pick business grow by adding an extra (spring) season.

For agritourism farms, tulips are an excellent addition to year round programs. As one of the most popular flowers, tulips are associated with the first signs of spring. Many farms worldwide—including us, at our own **The Tulip Barn**—host tulip festivals each spring.

If you are considering adding tulips to your U-pick business, you have come to the right place. As professional bulb growers and operators of our own tulip festival, we can advise you on every aspect. We will help you select the best varieties for your festival and design a planting scheme to maximize bloom days. Additionally, we can provide specialized planting machines directly from the Netherlands.



FLOWER BULB PLANTING AND CARE

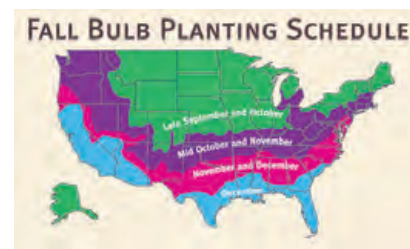
Landscaping with flower bulbs

1. Recommended Planting Time

Soil temperatures must be 55°F or below to ensure proper root development before winter sets in. Spring flowering bulbs must be planted in the fall. Planting can continue as long as the ground is workable, ideally around the time of the first frost and not later than the onset of winter.

In warmer climates (Zones 7b–10), bulbs must be pre-cooled for 8–10 weeks to ensure proper root development and to avoid stunted blooms. We offer complimentary pre-cooling to U.S. customers at our New York warehouse by request only. Please note that pre-cooled bulbs must be planted immediately upon receipt and are unlikely to return the following year.

Always store bulbs in a cool, dark, dry, and well-ventilated place. Bulbs can tolerate temperatures between 35°F and 75°F.



Recommended Planting Windows by Zone:

- Late September–October: Zones 4–5
- Mid October–November: Zones 6–7
- November–December: Zones 8–9
- December: Zone 10

2. Soil Conditions

Good drainage and ample sunlight are critical. Never plant bulbs where water pools, as all bulbs are harmed by “wet feet.” If you have heavy clay soil, loosen it to a depth of 10 inches before planting, and add topsoil, compost, or peat to improve drainage. Water thoroughly after planting.

For optimal results, apply a slow release nitrogen-phosphorus-potassium fertilizer (10-10-10 or 3-5-3). We recommend **Espoma Organic Bulb Tone**. Ideal timing is early spring when the first shoots emerge, and/or immediately after flowering.

Early bloomers can be planted under trees where they receive sunlight before leaves regrow.

If the same type of bulb is planted in the same bed year after year, **Rhizoctonia** may develop. On our farm, we prevent this through crop rotation.

5. Prolonging the Flowering Period by Mixing Bulb Types

An informal effect can be achieved by combining bulbs with different flowering times. Examples include mixed and solid tulip colors (pages 42-55) or long-lasting daffodil mixes (pages 56-59).

Combining tulips and daffodils with hyacinths and smaller bulbs creates a perfect, extended spring display. Because options are endless and a matter of personal taste, we do not offer standard multi type mixes. If you need assistance, we are ready to help.

9. Bulbs in Flower Containers

Flower containers are increasingly used to enhance urban areas and access roads. Bulbs are ideal for container planting, with crocus flowering as early as February. Plant bulbs in layers (with later-flowering bulbs at the lowest level) or use removable inner containers. Replace flowers once their blooming period ends. Excess water is dangerous in winter. Place containers on blocks to allow drainage. Use clay granules at the bottom and compost between bulb layers. Shorter bulb types are recommended, as they are less susceptible to wind damage.

3. Planting Depth and Distance

The general rule of thumb is to plant bulbs at a depth equal to **twice the bulb's height**. Although bulbs will often adjust naturally, it is good practice to plant them upright. Small bulbs can be scattered.

Spacing depends on the desired visual effect. When planting mixtures with sequential bloom times, bulbs should be placed closer together than single-variety plantings.

6. Perennializing

Many bulbs will perennialize if properly handled. It is vital to allow foliage to die back naturally (especially daffodils). The browning foliage is an essential part of the process. Do not cut back until the foliage has completely died and lies limp on the ground (6–8 weeks).

Foliage that is mowed, trimmed, or tied does not allow bulbs sufficient time to re absorb nutrients, resulting in reduced energy for blooming the following spring.

7. Bulbs in Lawns and Grass Strips

The earliest-flowering bulbs are best for planting under grass, as foliage must die down before mowing. Some bulbs, such as *Chionodoxa*, *Scilla*, or *Puschkinia*, propagate by seed, which ripens 6–8 weeks after flowering. Mowing should begin only after seeds have fallen.

Recommended species include: *Chionodoxa luciliae*, *crocus species*, *Fritillaria meleagris*, *daffodils*, *Leucojum aestivum*, and *Scilla siberica*.

4. Choosing the Right Combination of Bulbs

Selecting the right spring bulbs begins with deciding the desired effect.

Bulbs can be planted formally, in meadow gardens, scattered in lawns, under trees, or strategically in beds and borders.

In a successful bulb combination, both colors and flower shapes are balanced. A classic bulb planting consists of at least **six bulbs per square foot** (tulips, daffodils, hyacinths). When mixing tulips with perennials, this can be reduced to 3–4 bulbs.

Hyacinths are often used in formal beds, as their uniform height creates a peaceful effect. Tulips and daffodils combine well due to their complementary shapes and colors.

8. Mass Plantings in Beds and Borders

Spring-flowering bulbs can be added to perennial and rose borders for early-season color. As a bonus, perennials later conceal the withering bulb foliage.

Large plantings of hyacinths, daffodils, and tulips create a striking multi-color effect. Tulips combine beautifully with wallflowers, pansies, and forget-me-nots.



A COMPREHENSIVE BULB PROGRAM TO FIT YOUR NEEDS!

We offer packaging solutions tailored to a wide array of clients, including botanical gardens, cemeteries, cut-flower growers, e-commerce retailers, golf courses, greenhouses, independent garden centers, landscape professionals, municipalities, parks, re-wholesalers, universities, and U-pick farms.

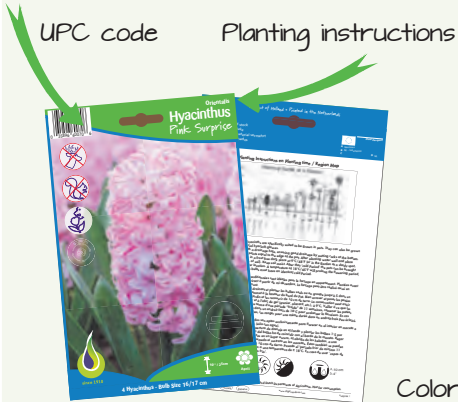
Retail Packages

Many of our 450 varieties are available in retail packaging (where indicated). These can be ordered individually in small minimums, allowing you to customize your display. For a ready-made solution, our retail store collection (page 90) includes 40 best sellers in a reusable wooden display. UPC codes appear on the front of each package.

Bin Display Boxes

Versatile bin boxes are popular with independent garden centers and landscape professionals. Colorful plant ID tags are included with each box. Consumers can hand-pick bulbs and tear off a tag as they go. Bulbs are divided into six suggested price groups, corresponding to tag colors. Suggested retail pricing is included with each shipment. UPC codes appear on the front of each box and the back of each tag.

pages
8-86



Bulk Trays

Ideal for landscape use and mass plantings, all varieties are available in bulk trays at discounted pricing. Each tray includes a colorful picture ID card.

Value Packs

Value packs allow independent garden centers to compete with big box stores by offering top-size bulbs at competitive prices. Each variety is packed with an individual picture card, UPC code, and a full color poster affixed to the display carton.

pages
92-94



pages
95

Jumbo Landscape Bags

Popular with homeowners and landscape professionals, these feature 50 bulbs per netton bag. Available in pallet displays or container refills of eight jumbo bags per unit.



TULIPS



Emperor

Early Spring

Bulb Size

12/+ cm

Retail Packages

10 bulbs per bag

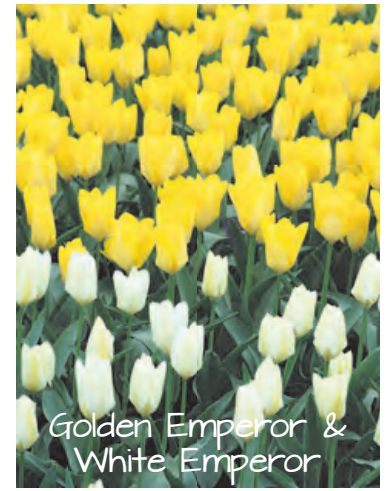
Bin Display

100 bulbs per box

Bulk

500 bulbs per tray

Emperor, or Fosteriana Tulips are early blooming varieties known for their large, elegant flowers and strong, tall stems. They bring vivid color to early spring landscapes in shades of red, orange, yellow, and white. Their broad, blue-green leaves and reliable performance make them a favorite for mass plantings and borders. They also pair well with early blooming daffodils.



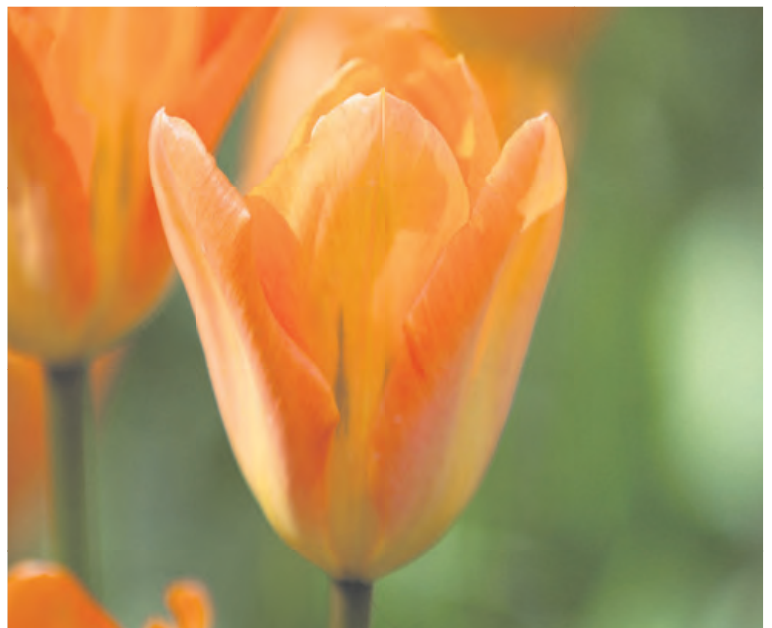
Apricot Emperor 10/bag
Height 16" Size 12/+ cm
100/bin 500/tray



Golden Emperor 10/bag
Height 16" Size 12/+ cm
100/bin 500/tray



Red Emperor 10/bag
Height 18" Size 12/+ cm
100/bin 500/tray



Orange Emperor 10/bag
Height 16" Size 12/+ cm
100/bin 500/tray



White Emperor
Height 18"
100/bin

10/bag
Size 12/+ cm
500/tray



Double Flowering

Disneyland Paris
Height 16"
100/bin

10/bag
Size 12/+ cm
500/tray



Flames Mystery
Height 16"
100/bin

10/bag
Size 12/+
500/tray



Emperor Mix
Height 16-18"
100/bin

10/bag
Size 12/+ cm
500/tray

TULIPS



Botanical

Early Spring

Bulb Size

Varies

Retail Packages

10 or 25 bulbs per bag

Bin Display

100 or 150 bulbs per box

Bulk

not available in trays

Botanical, or Miniature Tulips, bring a touch of natural beauty to early spring gardens. Perfect for rock gardens, borders, and naturalized areas, these hardy tulips return year after year. They pair beautifully with crocus, scilla, and early daffodils.



Tinka



Earliest to bloom!

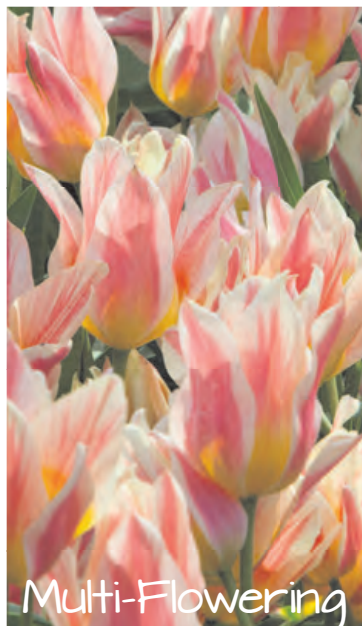
Showwinner (Kaufmanniana) 10/bag
Height 8" Size 12/+ cm
100/bin 500/tray



Tinka (Chrysantha)
Height 10" Size 6/+
25/bag 150/bin

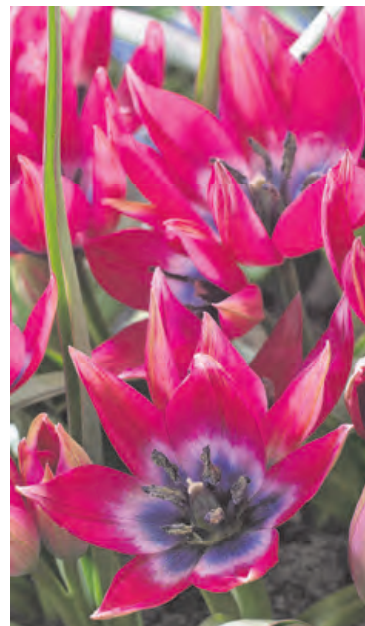


Lilac Wonder (Bakeri)
Height 6" Size 6/+ cm
25/bag 150/bin



Multi-Flowering

Quebec (Greigii) 10/bag
Height 8" Size 12/+ cm
100/bin 500/tray



Little Beauty (Humilis)
Height 6" Size 6/+ cm
25/bag 150/bin



Tarda (Dasystemon)
Height 3" Size 8/+ cm
25/bag 150/bin

TULIPS



Single Early

Early Spring

Bulb Size

12/+ cm

Retail Packages

10 bulbs per bag

Bin Display

100 bulbs per box

Bulk

500 bulbs per tray

The Single Early Prince Tulips, are the earliest long-stemmed tulips to bloom and are an excellent choice for landscaping or Easter pot production. Their egg-shaped flowers on medium sized stems stand strong in severe early spring weather. They combine well with hyacinths and early- to mid-season daffodils.



Mystic Prince
Height 14"
100/bin

10/bag
Size 12/+ cm
500/tray



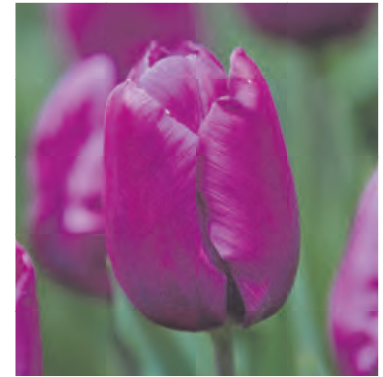
Prince Mix
Height 14"
100/bin

10/bag
Size 12/+ cm
500/tray



Ruby Prince
Height 16"
100/bin

10/bag
Size 12/+ cm
500/tray



Purple Prince
Height 14"
100/bin

10/bag
Size 12/+ cm
500/tray



Salmon Prince
Height 14"
100/bin

10/bag
Size 12/+ cm
500/tray



Sunny Prince
Height 14"
100/bin

10/bag
Size 12/+ cm
500/tray



White Prince
Height 12"
100/bin

10/bag
Size 12/+ cm
500/tray

TULIPS



Double

Early to Late Season

Bulb Size

12/+ cm or 11/12 cm

Retail Packages

10 bulbs per bag

Bin Display

100 or 125 bulbs per box

Bulk

500 or 700 bulbs per tray

Featuring giant, peony-like flowers in an array of bright colors, Double Tulips are a favorite among cut-flower farmers. The shorter varieties pair well with muscari and are especially attractive in mass plantings. Taller varieties should be planted in spots protected from wind to ensure best performance.



Limousine

Giant flowers



Early Season

Double Gudoshnik 10/bag
Height 24" Size 12/+ cm
100/bin 500/tray



Early Season

Northcap 10/bag
Height 18" Size 11/12
125/bin 700/tray



Mid Season

Double Negrita 10/bag
Height 18" Size 12/+ cm
100/bin 500/tray



Early Season

Limousine 10/bag
Height 14" Size 11/12 cm
125/bin 700/tray



Mid Season

Double Pastel Mix 10/bag
 Height 16" Size 12/+ cm
 100/bin 500/tray



Mid Season

Foxtrot 10/bag
 Height 14" Size 12/+ cm
 100/bin 500/tray



Mid Season

Foxy Foxtrot 10/bag
 Height 14" Size 12/+ cm
 100/bin 500/tray



Mid Season

Romantic Mix 10/bag
 Height 14" Size 12/+ cm
 100/bin 500/tray

Color-changing blooms



Mid Season

Sun Lover
Height 22"
100/bin

10/bag
Size 12/+ cm
500/tray



Mid Season

Miranda
Height 22"
100/bin

10/bag
Size 12/+ cm
500/tray



Mid Season

Yellow Pomponette
Height 22"
100/bin

10/bag
Size 12/+ cm
500/tray



Mid Season

Spring Joy Mix
Height 22"
100/bin

10/bag
Size 12/+ cm
500/tray

Giant flowers

NEW



Late Season

Bombastic Red
Height 22"
100/bin

10/bag
Size 12/+
500/tray



Late Season

Double Surprise 10/bag
 Height 16" Size 11/12
 125/bin 700/tray



Late Season

Rosy Diamond 10/bag
 Height 14" Size 11/12 cm
 125/bin 700/tray



Late Season

Canyon 10/bag
 Height 16" Size 11/12
 125/bin 700/tray



Late Season

Icoon 10/bag
 Height 20" Size 12/+ cm
 100/bin 500/tray



Late Season

Carnaval de Nice 10/bag
 Height 20" Size 11/12 cm
 125/bin 700/tray

TULIPS



Darwin Hybrid

Mid Season

Bulb Size

12/+ cm

Retail Packages

10 bulbs per bag

Bin Display

100 bulbs per box

Bulk

500 bulbs per tray

Renowned for their impressive size and strength, Darwin Hybrid Tulips are the stars of the mid-spring garden. Featuring massive flowers on tall, sturdy stems, they are especially effective for mass plantings. Most of the varieties in this section are grown in the fields of our hometown, De Zilk, in the Netherlands. Among our new introductions this year, we especially recommend *Dafeng*, a variety that stands tall with exceptionally large blooms.



Ad Rem 10/bag
Height 24" Size 12/+ cm
100/bin 500/tray



Banja Luka 10/bag
Height 22" Size 12/+ cm
100/bin 500/tray



Apeldoorn's Elite 10/bag
Height 22" Size 12/+ cm
100/bin 500/tray



Daydream 10/bag
Height 22" Size 12/+ cm
100/bin 500/tray



Jade Maiden 10/bag
Height 20" Size 12/+ cm
100/bin 500/tray



Light and Dreamy 10/bag
Height 22" Size 12/+ cm
100/bin 500/tray



Apeldoorn Mix
Height 22"
100/bin

10/bag
Size 12/+ cm
500/tray



Giant flowers

Dafeng
Height 24"
100/bin

10/bag
Size 12/+ cm
500/tray



Kunyun &
Chongming Love



Chongming Love
Height 22"
100/bin

10/bag
Size 12/+ cm
500/tray



Color-changing blooms

Kunyun
Height 24"
100/bin

10/bag
Size 12/+ cm
500/tray



#1 yellow!

Novi Sun
Height 24"
100/bin

10/bag
Size 12/+ cm
500/tray



Hakuun
Height 24"
100/bin

10/bag
Size 12/+ cm
500/tray



First to bloom

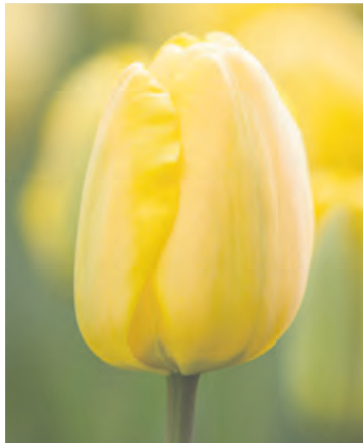
Lalibela
Height 24"
100/bin

10/bag
Size 12/+ cm
500/tray



Parade
Height 24"
100/bin

10/bag
Size 12/+ cm
500/tray



Golden Parade
Height 24"
100/bin

10/bag
Size 12/+ cm
500/tray



Triple A
Height 20"
100/bin

10/bag
Size 12/+ cm
500/tray



Imperial Garden
Height 22"
100/bin

10/bag
Size 12/+ cm
500/tray

TULIPS



Impression Series

The Impression Series is a truly impressive family of tulips. Distinguished by their huge flower heads on tall, strong stems, they are available in shades of red, pink, and soft orange. All varieties are grown on our own farm, ensuring consistent quality. This year we are pleased to welcome back *Salmon Impression*.



Salmon Impression 10/bag
 Height 24" Size 12/+ cm
 100/bin 500/tray



#1 Red

Red Impression 10/bag
 Height 24" Size 12/+ cm
 100/bin 500/tray



#1 Pink

Pink Impression 10/bag
 Height 24" Size 12/+ cm
 100/bin 500/tray



Variegated foliage

Design Impression 10/bag
 Height 24" Size 12/+ cm
 100/bin 500/tray



Impression Mix 10/bag
 Height 24" Size 12/+ cm
 100/bin 500/tray

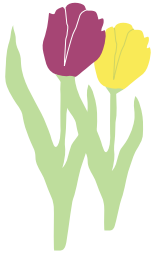


Blushing Impression 10/bag
 Height 24" Size 12/+ cm
 100/bin 500/tray



Apricot Impression 10/bag
 Height 24" Size 12/+ cm
 100/bin 500/tray

TULIPS



Van Eijk Series

Members of the Van Eijk tulip family are the earliest Darwin Hybrids to bloom, making them especially well-suited for pairing with later-blooming daffodil types. Van Eijk tulips feature long-lasting blooms in rich shades of red, pink, and orange, and they are our top choice for U-pick farms and tulip festivals.

Long-lasting flowers!



Van Eijk Mix
Height 22"
100/bin

10/bag
Size 12/+ cm
500/tray



Orange Van Eijk
Height 22"
100/bin

10/bag
Size 12/+ cm
500/tray



Lady Van Eijk
Height 22"
100/bin

10/bag
Size 12/+ cm
500/tray



Salmon Van Eijk
Height 22"
100/bin

10/bag
Size 12/+ cm
500/tray



Mystic Van Eijk
Height 22"
100/bin

10/bag
Size 12/+ cm
500/tray



Red Van Eijk
Height 22"
100/bin

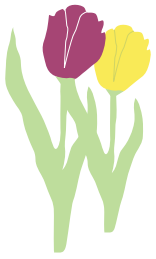
10/bag
Size 12/+ cm
500/tray



Van Eijk
Height 22"
100/bin

10/bag
Size 12/+ cm
500/tray

TULIPS



Mixed

Darwin Hybrid Mixture

One of the all-time favorites for landscaping, our Darwin Hybrid Mixture includes all available shades of yellow, red, pink, white, orange, and two-tone varieties. This mix is especially impressive in mass displays, creating bold and colorful spring landscapes.



Darwin Hybrid Mix	10/bag
Height 22"	Size 12/+
100/bin	500/tray

TULIPS



Triumph

Mid Season

Bulb Size

12/+ cm

Retail Packages

10 bulbs per bag

Bin Display

100 bulbs per box

Bulk

500 bulbs per tray

The largest and most versatile class of tulips, Triumphs are available in an astonishing range of colors. They feature long-lasting, angular flowers on medium-height stems that stand up well to severe spring weather. Triumph Tulips are the top choice for forcing in pots and for cut-flower production. Many of these varieties are grown on our own farm in the Netherlands. This year we are pleased to introduce nine new varieties.



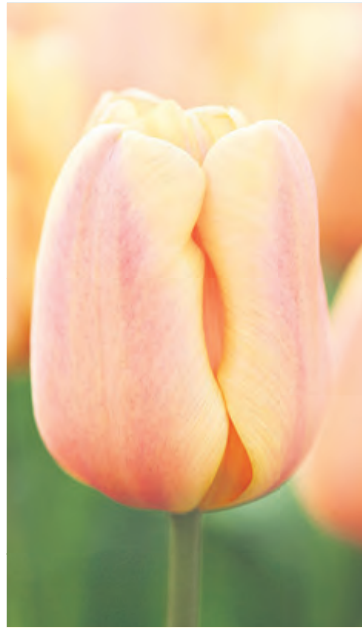
Cadans
Height 18"
100/bin

10/bag
Size 12/+ cm
500/tray



Denmark
Height 20"
100/bin

10/bag
Size 12/+ cm
500/tray



Apricot Foxx
Height 18"
100/bin

10/bag
Size 12/+ cm
500/tray



Kissable
Height 16"
100/bin

10/bag
Size 12/+ cm
500/tray



Happy Generation
Height 18"
100/bin

10/bag
Size 12/+ cm
500/tray



Rodolfo
Height 18"
100/bin

10/bag
Size 12/+ cm
500/tray



Roman Empire
Height 20"
100/bin

10/bag
Size 12/+ cm
500/tray



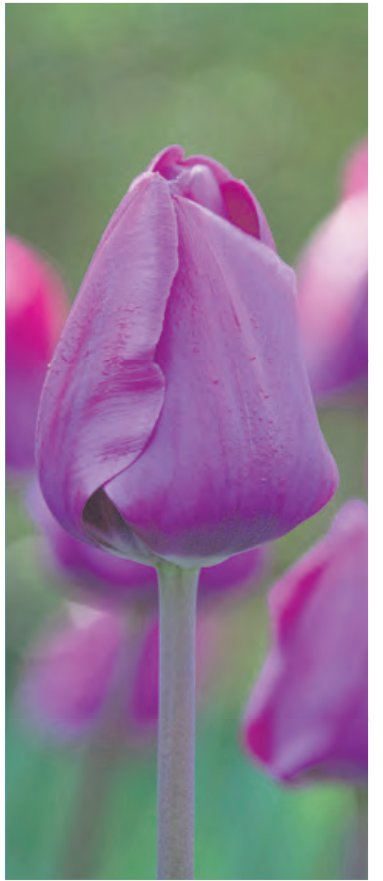
Jacuzzi
Height 16"
100/bin

10/bag
Size 12/+ cm
500/tray



Kansas Proud
Height 22"
100/bin

10/bag
Size 12/+ cm
500/tray



Negrita
Height 18"
100/bin

10/bag
Size 12/+ cm
500/tray



Slawa
Height 18"
100/bin

10/bag
Size 12/+ cm
500/tray



Royal Virgin
Height 20"
100/bin

10/bag
Size 12/+ cm
500/tray



Ohio
Height 16"
100/bin

10/bag
Size 12/+ cm
500/tray



Roeska
Height 20"
100/bin

10/bag
Size 12/+ cm
500/tray



One Direction
Height 16"
100/bin

10/bag
Size 12/+ cm
500/tray



Pink Ardour
Height 20"
100/bin

10/bag
Size 12/+ cm
500/tray



Tiramisu
Height 20"
100/bin

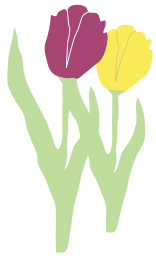
10/bag
Size 12/+ cm
500/tray



Jumbo Pink
Height 24"
100/bin

10/bag
Size 12/+ cm
500/tray

TULIPS



Dynasty Series

The Dynasty Series has proven its quality as a reliable forcing tulip while also excelling in garden displays. Soft shades of pink, salmon, and yellow pastels create a lovely spring painting. All of these varieties are grown on our own farm. New this year is the *Dynasty Mixture*, composed of all six varieties.



NEW

Dynasty Mixture
Height 18"
100/bin Size 12/+ cm
500/tray



Bingo 10/bag
Height 16" Size 12/+ cm
100/bin 500/tray

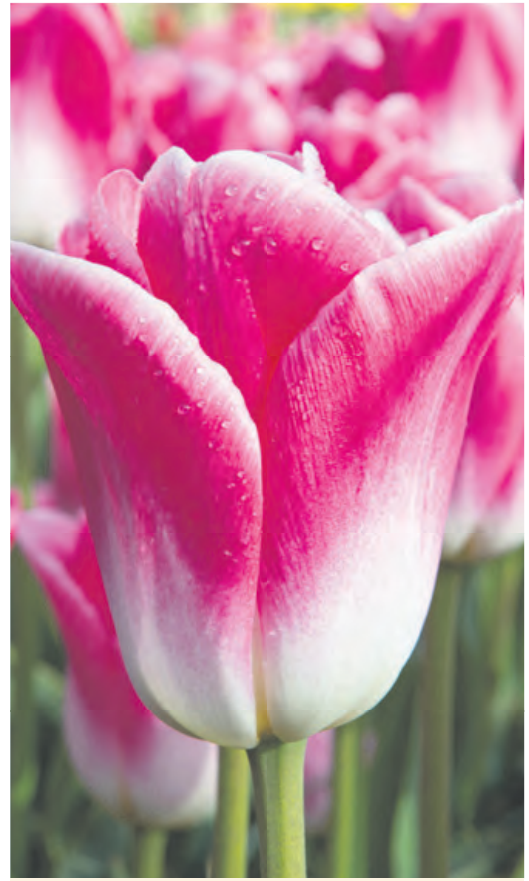


Orange Dynasty 10/bag
Height 18" Size 12/+ cm
100/bin 500/tray



Salmon Dynasty
Height 18"
100/bin

10/bag
Size 12/+ cm
500/tray



Dynasty
Height 20"
100/bin

10/bag
Size 12/+ cm
500/tray



Tom Pouce
Height 18"
100/bin

10/bag
Size 12/+ cm
500/tray



Sunrise Dynasty
Height 20"
100/bin

10/bag
Size 12/+ cm
500/tray



Color-changing blooms

Spryng Break 10/bag
Height 20" Size 12/+ cm
100/bin 500/tray



Spryng Tide 10/bag
Height 20" Size 12/+ cm
100/bin 500/tray



Color-changing blooms

Spryng Sunrise 10/bag
Height 20" Size 12/+ cm
100/bin 500/tray



Spryng Tide & Spryng Break



Strong Gold 10/bag
Height 20" Size 12/+ cm
100/bin 500/tray



Strong Love 10/bag
Height 20" Size 12/+ cm
100/bin 500/tray

TULIPS



Flag Series

Mid Season

Bulb Size

12/+ cm

Retail Packages

10 bulbs per bag

Bin Display

100 bulbs per box

Bulk

500 bulbs per tray

These strong, medium height tulips are all grown at our own nursery and are excellent for landscaping. Flag Mix is particularly long lasting, making it one of the best options for mass displays and U-pick farms.



Flaming Flag
Height 20"
100/bin

10/bag
Size 12/+ cm
500/tray



Sweet Flag
Height 20"
100/bin

10/bag
Size 12/+ cm
500/tray



White Flag
Height 20"
100/bin

10/bag
Size 12/+ cm
500/tray



Purple Flag
Height 20"
100/bin

10/bag
Size 12/+ cm
500/tray



Pink Flag
Height 20"
100/bin

10/bag
Size 12/+ cm
500/tray



Flag Mixture
Height 20"
100/bin

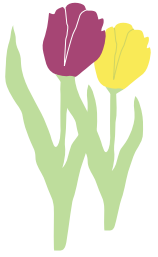
10/bag
Size 12/+ cm
500/tray



Cream Flag
Height 20"
100/bin

10/bag
Size 12/+ cm
500/tray

TULIPS



Mixed

Triumph Mixture

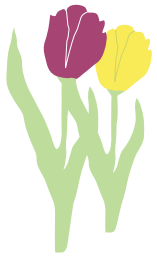
Our most colorful mid-season mixture, Triumph Mix is an all-time favorite among landscape professionals. It includes all available shades of yellow, red, pink, purple, and white, making it especially effective in mass displays.



Triumph Mix
Height 20"
100/bin

Size 12/+ cm
500/tray

TULIPS



Mixed

Mid-Season Mixtures

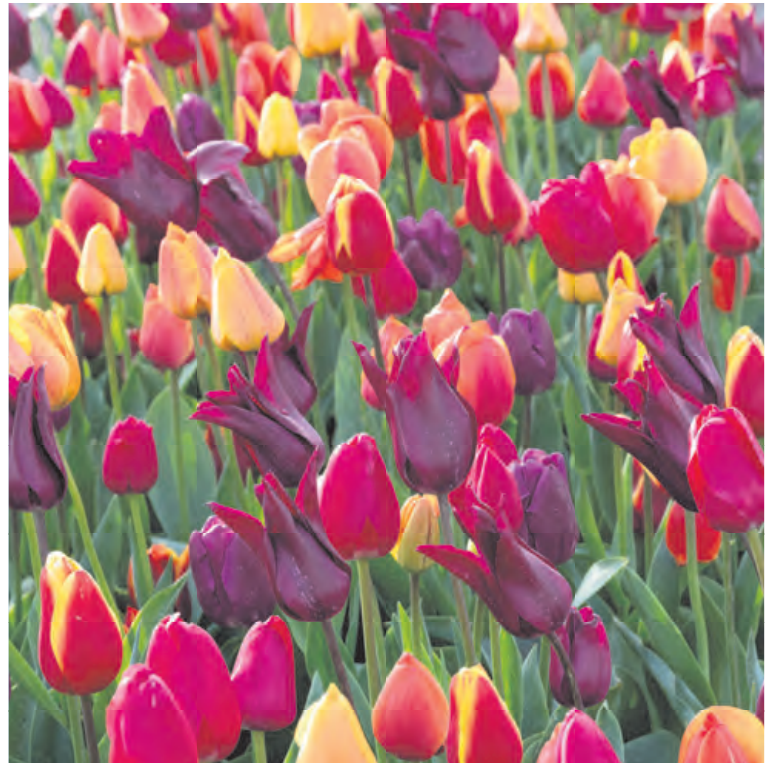
We have carefully developed our mid-season blends to perfectly balance color, height, and bloom time. All varieties are grown at the farm of Ruijgrok Flowerbulbs, ensuring consistent quality. Please note that all images of tulip mixes represent the best display of that particular bloom season. Each spring is unique, and additional mixes can be found throughout the catalog.



Holiday Mix
Height 18"
100/bin Size 12/+ cm
500/tray



Stars and Stripes Mix
Height 22"
100/bin Size 12/+ cm
500/tray



Blushing Purple Mix
Height 22"
100/bin Size 12/+ cm
500/tray

TULIPS



Fringed

Late Spring

Bulb Size

11/12 cm

Retail Packages

10 bulbs per bag

Bin Display

125 bulbs per box

Bulk

700 bulbs per tray

Fringed, or Crispa Tulips, are admired for their distinctive fringed petal edges that add texture and sparkle to the spring garden. Their elegant blooms appear in a wide range of vivid colors, making them perfect for striking floral displays.



Fabio
Height 18"
125/bin

10/bag
Size 11/12 cm
700/tray



Mid Season

Crystal Star
Height 22"
125/bin

10/bag
Size 11/12 cm
700/tray



Mid Season

Crystal Beauty
Height 22"
125/bin

10/bag
Size 11/12 cm
700/tray



Flamenco
Height 22"
125/bin

10/bag
Size 11/12
700/tray



New Santa
Height 18"
125/bin

10/bag
Size 11/12 cm
700/tray



Labrador
Height 20"
125/bin

10/bag
Size 11/12 cm
700/tray



Salsa
Height 22"
125/bin

10/bag
Size 11/12 cm
700/tray



Lambada 10/bag
 Height 22" Size 11/12 cm
 125/bin 700/tray



Color-changing blooms

Purple Circus 10/bag
 Height 16" Size 11/12 cm
 125/bin 700/tray



Double Crispa

Qatar 10/bag
 Height 18" Size 11/12 cm
 125/bin 700/tray



San Martin 10/bag
 Height 18" Size 11/12 cm
 125/bin 700/tray



Fancy Frills 10/bag
 Height 20" Size 11/12 cm
 125/bin 700/tray

TULIPS



Lily Flowering

Late Spring

Bulb Size

12/+ cm

Retail Packages

10 bulbs per bag

Bin Display

100 bulbs per box

Bulk

500 bulbs per tray

Elegant and refined, Lily Flowering Tulips feature pointed petals and a graceful, flared form on tall, slender stems. These varieties perform especially well as the focal point of a border, mixed with Single Late Tulips, or in combination with early perennials. Blooms can extend through late May, adding lasting beauty to the spring garden.



Claudia 10/bag
Height 24" Size 12/+ cm
100/bin 500/tray



Elegant Lady 10/bag
Height 20" Size 12/+ cm
100/bin 500/tray



Oriental Pearl 10/bag
Height 20" Size 12/+ cm
100/bin 500/tray



Purple Dream 10/bag
Height 28" Size 12/+ cm
100/bin 500/tray



Marilyn 10/bag
Height 22" Size 12/+ cm
100/bin 500/tray



Lily Flowering Mix
Height 24" Size 12/+ cm
100/bin 500/tray



Fire Wings
Height 20"
100/bin

10/bag
Size 12/+ cm
500/tray



NEW

Royal Charm
Height 20"
100/bin

10/bag
Size 12/+ cm
500/tray



NEW

La Perla
Height 18"
100/bin

10/bag
Size 12/+ cm
500/tray



NEW

Color-changing blooms

Vendee Globe
Height 24"
100/bin

10/bag
Size 12/+ cm
500/tray



NEW

Sarah Raven
Height 22"
100/bin

10/bag
Size 12/+ cm
500/tray

TULIPS



Parrot

Late Spring

Bulb Size

11/12 cm

Retail Packages

10 bulbs per bag

Bin Display

125 bulbs per box

Bulk

700 bulbs per tray

Parrot Tulips captivate with their bold, ruffled petals and vivid, painterly colors.

Blooming in late spring, these large, exotic flowers are perfect for borders and as cut flowers in dramatic floral displays.

Please note to order early, as stocks of this type will be limited.



Black Parrot
Height 20"
125/bin

10/bag
Size 11/12 cm
700/tray



Apricot Parrot
Height 24"
125/bin

10/bag
Size 11/12 cm
700/tray



Caribbean Parrot
Height 24"
125/bin

10/bag
Size 11/12 cm
700/tray



Power Parrot
Height 20"
125/bin

10/bag
Size 11/12 cm
700/tray



Negrita Parrot
Height 18"
125/bin

10/bag
Size 11/12 cm
700/tray



Cabanna
Height 20"
125/bin

10/bag
Size 11/12 cm
700/tray



Red Madonna 10/bag
 Height 20" Size 11/12 cm
 125/bin 700/tray



Deejay Parrot 10/bag
 Height 24" Size 11/12 cm
 125/bin 700/tray



Texas Flame 10/bag
 Height 18" Size 11/12 cm
 125/bin 700/tray



Amazing Parrot 10/bag
 Height 20" Size 11/12 cm
 125/bin 700/tray



Parrot King 10/bag
 Height 16" Size 11/12 cm
 125/bin 700/tray



Estella Rijnveld 10/bag
 Height 22" Size 11/12 cm
 125/bin 700/tray

TULIPS



Green

Late Spring

Bulb Size

11/12 cm

Retail Packages

10 bulbs per bag

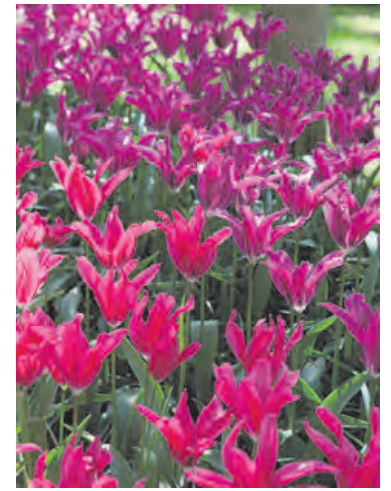
Bin Display

125 bulbs per box

Bulk

700 bulbs per tray

Viridiflora, or Green Tulips, are distinguished by their striking green petals accented with contrasting colors. Late-blooming and supported by sturdy stems, they produce long-lasting flowers that often point outward, similar to the Lily Flowering class. These tulips are excellent for cut-flower arrangements and add unique texture to spring displays.



Doll's Minuet 10/bag
Height 20" Size 11/12 cm
125/bin 700/tray



Purple Doll 10/bag
Height 20" Size 11/12 cm
125/bin 700/tray



Orange Marmelade 10/bag
Height 20" Size 11/12 cm
125/bin 700/tray



Greenland 10/bag
Height 20" Size 11/12 cm
125/bin 700/tray

TULIPS



Single Late

Late Spring

Bulb Size

12/+ cm

Retail Packages

10 bulbs per bag

Bin Display

100 bulbs per box

Bulk

500 bulbs per tray

Single Late (French) Tulips are celebrated for their tall, elegant stems and large, perfectly shaped blooms. Flowering in late spring, they combine beautifully with Lily Flowering and Parrot Tulips. The best choice for landscape plantings in the southern USA (zones 5b - 9a).



Blushing Lady
Height 24"
100/bin

10/bag
Size 12/+ cm
500/tray



Big Smile
Height 26"
100/bin

10/bag
Size 12/+ cm
500/tray



Dordogne
Height 24"
100/bin

10/bag
Size 12/+ cm
500/tray



Alibi
Height 22"
100/bin

10/bag
Size 12/+ cm
500/tray



Catherina
Height 24"
100/bin

10/bag
Size 12/+ cm
500/tray



Color-changing blooms

El Nino 10/bag
 Height 30" Size 12/+ cm
 100/bin 500/tray



Grand Perfection 10/bag
 Height 24" Size 12/+ cm
 100/bin 500/tray



Kingsblood 10/bag
 Height 26" Size 12/+ cm
 100/bin 500/tray



Helmar 10/bag
 Height 24" Size 12/+ cm
 100/bin 500/tray



Mata Hari 10/bag
 Height 28" Size 12/+ cm
 100/bin 500/tray



Menton
 Height 26"
 100/bin

10/bag
 Size 12/+ cm
 500/tray



Orleans
 Height 24"
 100/bin

10/bag
 Size 12/+ cm
 500/tray



Purple Lady
 Height 24"
 100/bin

10/bag
 Size 12/+ cm
 500/tray



Queen of Night
 Height 24"
 100/bin

10/bag
 Size 12/+ cm
 500/tray



Sorbet
 Height 24"
 100/bin

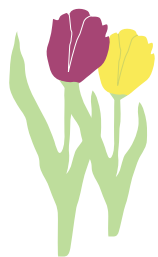
10/bag
 Size 12/+ cm
 500/tray



Wilja
 Height 24"
 100/bin

10/bag
 Size 12/+ cm
 500/tray

TULIPS



Mixed

Single Late Mixtures

Most Single Late Tulips descend from the famous *Mrs. John T. Scheepers* variety and were originally grown in France. Our popular French Mixture delivers an array of colors ranging from pure white to nearly black and everything in between. *Black and White Cookie* and *Sunshine Mix* are perfect marriages of three complementary colors. New this year is the *French Cancan Mix*, an exciting blend of red, pink, orange, and apricot.



French Mixture

Height 24-26"
100/bin

Size 12/+ cm
500/tray



French Cancan Mix

Height 24-26"
100/bin

Size 12/+ cm
500/tray



Black & White Cookie Mix

Height 24-26"
100/bin

Size 12/+ cm
500/tray



Sunshine Mix

Height 24-26"
100/bin

Size 12/+ cm
500/tray

TULIPS



Early to
Late Season

Our All Season Landscape Mixes are designed to bloom over an extended period in overlapping sequences. These unique blends are tested each year at our show garden, *The Tulip Barn*, in the Netherlands, and are carefully fine tuned and upgraded each season. Each mix contains at least ten varieties from various tulip classes and is best suited for mass plantings where extended bloom time is desired. For optimal effect, plant more densely than usual, approximately two inches apart.

All Season Landscape Mixes



All Season Yellow

Height 14-28"

Size 12/+ cm

100/bin

500/tray



All Season Red

Height 14-28"
Size 12/+ cm
100/bin
500/tray



All Season White

Height 14-28"
Size 12/+ cm
100/bin
500/tray



Mondriaan All Season Mix

Height 14-28"
Size 12/+ cm
100/bin
500/tray



All Season Orange

Height 14-28"

Size 12/+ cm

100/bin

500/tray



All Season Purple

Height 14-28"

Size 12/+ cm

100/bin

500/tray



All Season Pink

Height 14-28"

Size 12/+ cm

100/bin

500/tray



Lollipop All Season Mix

Height 14-28"

Size 12/+ cm

100/bin

500/tray

NEW



All Season Pink and Yellow

Height 14-28"
Size 12/+ cm
100/bin
500/tray

NEW



All Season White and Yellow

Height 14-28"

Size 12/+ cm

100/bin

500/tray

NEW



Fire Glow All Season Mix

Height 14-28"

Size 12/+ cm

100/bin

500/tray



All Season Pink and Purple Mix

Height 14-28"

Size 12/+ cm

100/bin

500/tray



TULIPS



Early to Late Season

Our ultimate tulip mixture, with tens of millions of bulbs planted each fall, produces a rainbow of colors blooming from early to late season. Every tulip type, shape, and shade is represented in this blend, making it the most popular choice among our U-pick customers.



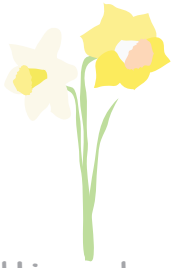
All Season Barn Mix

All Season Barn Mix

Height 14-28"
Size 12/+ cm
500/tray



DAFFODILS



multi-colored

Early to Mid Season

Large Flowering Mix

One of our best-selling items each year, this all-inclusive Large Flowering Mix spans every class of long-stemmed daffodil and includes every color available on the market. A favorite among landscape professionals for mass plantings, it is deer-resistant and naturalizing, returning strongly for many years.



Height

14-20"

Bulb Size

12/14 cm

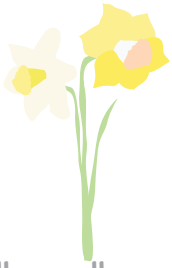
Bin Display

75 bulbs per box

Bulk

400 bulbs per tray

DAFFODILS



all yellows

Early to Mid Season

Long-lasting Amsterdam Mix

For mass plantings that require an extended bloom time, Amsterdam Mix is the ideal choice. This balanced blend contains at least five varieties that bloom sequentially and features the strongest yellow narcissus available. In southern states, the first blooms may appear as early as January. For optimal results, plant approximately 12 bulbs per square foot.



Height

14-20"

Bulb Size

12/14 cm

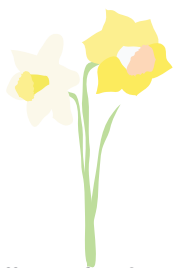
Bin Display

75 bulbs per box

Bulk

400 bulbs per tray

DAFFODILS



all whites

Early to Mid Season Long-lasting Holland Mix

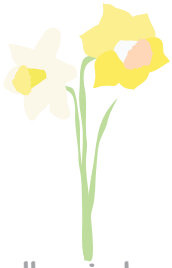
This elegant mix of pure white daffodils is a popular choice each fall. Holland Mix contains at least five varieties that bloom sequentially, ensuring an extended display. In the southern USA, the first blooms may appear as early as January. For optimal results, plant approximately 12 bulbs per square foot.



Holland Mix
Height 14-20"
75/bin

Size 12/14 cm
400/tray

DAFFODILS



all pinks

This soft blend of pink-cup daffodils is the perfect messenger of spring. Rotterdam Mix contains at least five varieties that bloom sequentially, ensuring an extended display. It combines beautifully with the All Season Orange or Pink Tulip Mix (pages 48 & 50). For optimal results, plant approximately 12 bulbs per square foot.

Early to Mid Season Long-lasting Rotterdam Mix



Rotterdam Mix
Height 14-20"
75/bin

Size 12/14 cm
400/tray

DAFFODILS



Trumpet

Early Spring

Bulb Size

12/14 cm

Retail Packages

8 bulbs per bag

Bin Display

75 bulbs per box

Bulk

400 bulbs per tray

Trumpet Daffodils are true heralds of spring, as they are the first class to appear and bloom very early in the season. They feature giant trumpets, often as long as the petals themselves. The earliest daffodil to bloom is *Rijnveld's Early Sensation*, while *Dutch Master* remains our #1 overall seller each year. Trumpet Daffodils are perfectly suited for containers, cut flowers, borders, and mass plantings. Like all daffodils, they are perennial and deer-resistant, provided the foliage is allowed to die down naturally.



Chromacolor
Height 16"
75/bin

8/bag
Size 12/14 cm
400/tray



British Gamble 8/bag
Height 18" Size 12/14 cm
75/bin 400/tray



Goblet 8/bag
Height 18" Size 12/14 cm
75/bin 400/tray



Earliest to bloom!

Rijnveld's Early Sensation 8/bag
Height 12" Size 12/14 cm
75/bin 400/tray



Mount Hood 8/bag
Height 16" Size 12/14 cm
75/bin 400/tray



#1 seller

Dutch Master 8/bag
Height 18" Size 12/14 cm
75/bin 400/tray

DAFFODILS



Large Cupped

Early Spring

Bulb Size

12/14 cm

Retail Packages

8 bulbs per bag

Bin Display

75 bulbs per box

Bulk

400 bulbs per tray

This group features large flowers in vivid colors that brighten the early spring garden. They are the perfect match for early blooming tulips such as Emperors (pages 8–9) and perform well in beds, borders, and containers. Large-Cupped Daffodils also make excellent cut flowers. Like all daffodils, they are perennial and deer-resistant, provided the foliage is allowed to die down naturally.



Carlton 8/bag
Height 18" Size 12/14 cm
75/bin 400/tray



Ice Follies 8/bag
Height 18" Size 12/14 cm
75/bin 400/tray



Audubon 8/bag
Height 16" Size 12/14 cm
75/bin 400/tray



Peaches and Cream 8/bag
Height 18" Size 12/14 cm
75/bin 400/tray



Pride of Lions 8/bag
Height 18" Size 12/14 cm
75/bin 400/tray

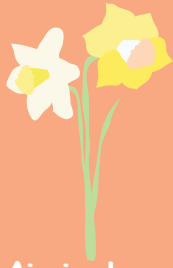


Soestdijk 8/bag
Height 18" Size 12/14 cm
75/bin 400/tray



Accent 8/bag
Height 18" Size 12/14 cm
75/bin 400/tray

DAFFODILS



Miniature

Early Spring

Bulb Size

12/14 cm

Retail Packages

10 bulbs per bag

Bin Display

100 bulbs per box

Bulk

500 bulbs per tray

Miniature, or Botanical Daffodils, come in many different shapes and perform beautifully in low borders, rock gardens, containers, or even naturalized in the lawn. They pair well with miniature tulips, scilla, and muscari. The latest to bloom in this section is *Thalia*, making it a perfect partner for mid-season tulips.



Earliest to bloom!

February Gold

Height 10"

100/bin

10/bag

Size 12/14 cm

500/tray



Tête à Tête

Height 8"

100/bin

10/bag

Size 12/14 cm

500/tray



Pueblo

Height 14"

100/bin

10/bag

Size 12/14 cm

500/tray



Minnow

Height 8"

100/bin

10/bag

Size 12/14 cm

500/tray



Double Tête

Tête DeLuxe

Height 10"

100/bin

10/bag

Size 12/14 cm

500/tray



Carice
 Height 12"
 100/bin

10/bag
 Size 12/14 cm
 500/tray



Hillstar
 Height 10"
 100/bin

10/bag
 Size 12/14 cm
 500/tray



Jetfire
 Height 8"
 100/bin

10/bag
 Size 12/14 cm
 500/tray



Latest to bloom!

Thalia
 Height 14"
 75/bin

10/bag
 Size 12/14 cm
 400/tray



Botanical Mixture
 Height 8-14"
 100/bin

10/bag
 Size 12/14 cm
 500/tray

DAFFODILS



Double

Mid Season

Bulb Size

12/14 cm

Retail Packages

8 bulbs per bag

Bin Display

75 bulbs per box

Bulk

400 bulbs per tray

Double Daffodils feature a filled center instead of a traditional cup, creating a lush, layered bloom. Mid-season flowering, they combine beautifully with Darwin Hybrid and Triumph Tulips, as well as hyacinths. Plant in small groups to highlight their fragrant and distinctive flowers. Due to the heavy nature of the blooms, planting in an area protected from strong wind is recommended.



Double Sunrise

8/bag

Height 20"

Size 12/14 cm

75/bin

400/tray



Replete

8/bag

Height 18"

Size 12/14 cm

75/bin

400/tray



Flower Drift

8/bag

Height 18"

Size 12/14 cm

75/bin

400/tray



Tahiti

8/bag

Height 18"

Size 12/14 cm

75/bin

400/tray



White Lion
Height 18"
75/bin

8/bag
Size 12/14 cm
400/tray



Obdam
Height 18"
75/bin

8/bag
Size 12/14 cm
400/tray



Sweet Desire
Height 18"
75/bin

8/bag
Size 12/14 cm
400/tray



Sizzling Fire
Height 18"
75/bin

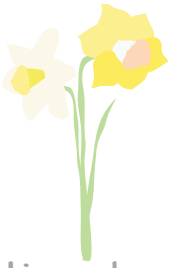
8/bag
Size 12/14 cm
400/tray



Ice King
Height 18"
75/bin

8/bag
Size 12/14 cm
400/tray

DAFFODILS



multi-colored

Mid Season Double Mix

Our gorgeous Double Daffodil Mix provides a spring burst of rich colors and fragrance. It contains at least five different varieties and is well suited for small plantings along borders or in groups paired with tulips. Most popular for mass plantings, this mix offers a refreshing change of pace from more traditional daffodils.



Double Mix
Height 18"
75/bin

Size 12/14 cm
400/tray

DAFFODILS



Small-Cupped

Mid-Late Spring

Bulb Size

12/14 cm

Retail Packages

8 bulbs per bag

Bin Display

75 bulbs per box

Bulk

400 bulbs per tray

The class of Small-Cupped Daffodils descends from *Narcissus poeticus*, a classic daffodil originating in Southern Europe and the Balkans. These standout bloomers offer vibrant, long-lasting flowers that are perfect for borders, naturalizing, and cut-flower use. Like all daffodils, they are perennial and deer-resistant, provided the foliage is allowed to die down naturally.



Barrett Browning 8/bag
 Height 16" Size 12/14 cm
 75/bin 400/tray



Poeticus Recurvus 8/bag
 Height 14" Size 12/14 cm
 75/bin 400/tray



Red Devon 8/bag
 Height 18" Size 12/14 cm
 75/bin 400/tray

DAFFODILS



Bunch-Flowering

Late Spring

Bulb Size

12/14 cm

Retail Packages

8 bulbs per bag

Bin Display

75 bulbs per box

Bulk

400 bulbs per tray

Bunch-Flowering Daffodils bloom abundantly, often producing more than six flowers per stem. They are the latest flowering and most fragrant class of daffodils, combining perfectly with mid-season tulips. Like all daffodils, they are perennial and deer resistant.



Beautiful Eyes 8/bag
Height 14" Size 12/14 cm
75/bin 400/tray



Geranium 8/bag
Height 14" Size 12/14 cm
75/bin 400/tray

Prom Dance 8/bag
Height 14" Size 12/14 cm
75/bin 400/tray



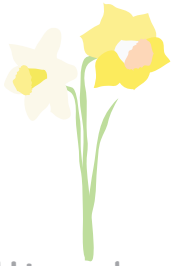
Martinette 8/bag
Height 14" Size 12/14 cm
75/bin 400/tray



Sir Winston Churchill 8/bag
Height 12" Size 12/14 cm
75/bin 400/tray

Kedron 8/bag
Height 16" Size 12/14 cm
75/bin 400/tray

DAFFODILS



Multi-colored

Our colorful Fragrant Mix is carefully composed of more than five varieties. Late-blooming, they are at their best in large plantings, especially when combined with mid-season and late tulips.

Late Season Fragrant Mix



Fragrant Mix
Height 14-16"
75/bin

Size 12/14 cm
400/tray

DAFFODILS



Butterfly

Late Spring

Bulb Size

12/14 cm

Retail Packages

8 bulbs per bag

Bin Display

75 bulbs per box

Bulk

400 bulbs per tray

Butterfly Daffodils are elegant blooms with split coronas that spread out like butterfly wings. Fragrant and late blooming, they create a delicate, graceful look in spring gardens. Ideally suited for borders, containers, and cut-flower use, these varieties add refinement and charm to any planting.

Due to limited availability, it is strongly recommended to order early.



Cassata
Height 14"
75/bin

8/bag
Size 12/14 cm
400/tray



Orangery
Height 14"
75/bin

8/bag
Size 12/14 cm
400/tray



Donau Park
Height 16"
75/bin

8/bag
Size 12/14 cm
400/tray



Lemon Beauty
Height 14"
75/bin

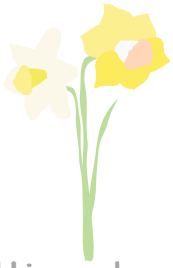
8/bag
Size 12/14 cm
400/tray



Cum Laude
Height 16"
75/bin

8/bag
Size 12/14 cm
400/tray

DAFFODILS



Multi-colored

Butterfly Mix is a rich and abundant blend of Split Corona Daffodils in an array of bright colors. Late-blooming and fragrant, they deserve a prominent spot in the border where their unique form can be fully appreciated.

Late Season Butterfly Mix



Butterfly Mix
Height 14-16"
75/bin

Size 12/14 cm
400/tray

HYACINTHS



Mid Season

Bulb Size

16/17 cm

Retail Packages

4 bulbs per bag

Bin Display

50 bulbs per box

Bulk

250 bulbs per tray

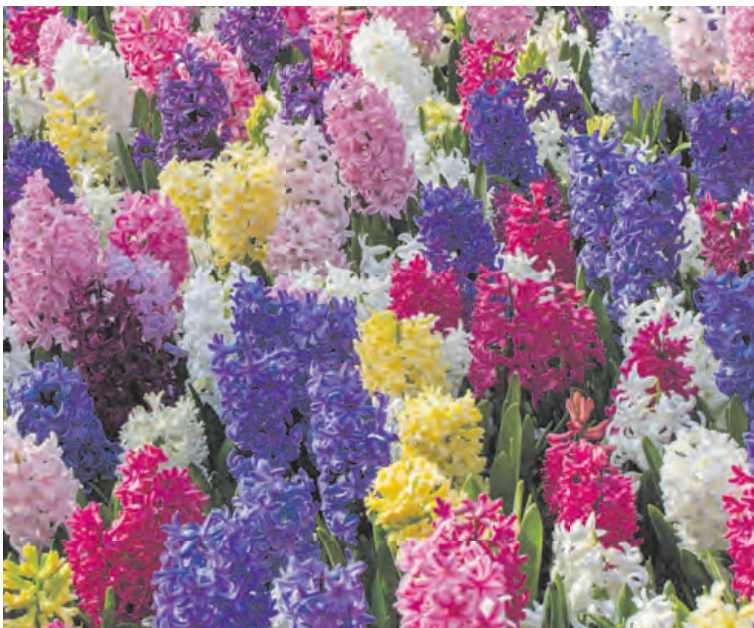
Hyacinth bulbs produce dense clusters of small, star-shaped blooms. Immensely fragrant, they add rich scent and bold color to beds, borders, and containers. They make a splendid combination with early- to mid-season tulips. Our assortment includes all available colors, with most varieties grown on our family farm. Hyacinths are perennial and naturally unattractive to deer and rodents.



Mix the Blues 4/bag
Height 10" Size 16/17 cm
50/bin 250/tray



Cotton Candy Mix 4/bag
Height 10" Size 16/17 cm
50/bin 250/tray



Rainbow Mix 4/bag
Height 10" Size 16/17 cm
50/bin 250/tray



Mix the Pinks 4/bag
Height 10" Size 16/17 cm
50/bin 250/tray



Aqua
Height 10"
50/bin

4/bag
Size 16/17 cm
250/tray



Gipsy Queen
Height 10"
50/bin

4/bag
Size 16/17 cm
250/tray



Jan Bos
Height 10"
50/bin

4/bag
Size 16/17 cm
250/tray



Miss Saigon
Height 10"
50/bin

4/bag
Size 16/17 cm
250/tray



Gipsy Princess
Height 10"
50/bin

4/bag
Size 16/17 cm
250/tray



Pink Pearl
Height 10"
50/bin

4/bag
Size 16/17 cm
250/tray



Blue Star
Height 10"
50/bin

4/bag
Size 16/17 cm
250/tray



White Pearl
Height 10"
50/bin

4/bag
Size 16/17 cm
250/tray

CROCUS



Early Spring

Bulb Size

6/+ cm and 8/9 cm

Retail Packages

25 bulbs per bag

Bin Display

250 bulbs per box
or 200 bulbs per box

Small Flowering

Small-Flowering, or Botanical Crocus, are among the earliest spring bulbs to bloom.

Their cup-shaped blossoms often appear through the last snow, symbolizing the first signs of spring. This group consists of various subtypes crossbred from the original wild crocus species.

Our assortment includes the wildly popular fall-flowering *Sativus* (Saffron) and *Orange Monarch*, the only true orange crocus.



Ard Schenk (Chrysanthus)

Height 4" Size 6/+ cm
25/bag 250/bin



Ruby Giant (Tommasinianus)

Height 4" Size 6/+ cm
25/bag 250/bin



Dorothy (Chrysanthus)

Height 4" Size 6/+ cm
25/bag 250/bin



Orange Monarch (Balansae)

Height 4" Size 6/+ cm
25/bag 250/bin



Botanical Mixture

Height 4" Size 6/+ cm
25/bag 250/bin



Sativus (Saffron)

Height 4" Size 8/9 cm
25/bag 200/bin



Blue Pearl (Chrysanthus)

Height 4" Size 6/+ cm
25/bag 250/bin



Tricolor (Sieberi)

Height 4" Size 6/+ cm
25/bag 250/bin

CROCUS



Large-Flowering

Early Spring

Bulb Size

8/9 cm

Retail Packages

25 bulbs per bag

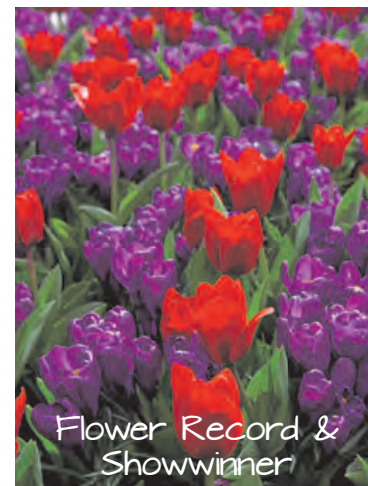
Bin Display

200 bulbs per box

Bulk

1,750 bulbs per tray

Large-Flowering, or Vernus Crocus, are excellent for borders, containers, rock gardens, and lawns. Provided the foliage is allowed to die down naturally, they will return reliably for many years. They make a striking combination with Botanical Tulips (page 10) and *Chionodoxa*.



Flower Record & Showwinner



Flower Record 25/bag
Height 5" Size 8/9 cm
200/bin 1750/tray



Golden Yellow 25/bag
Height 5" Size 8/9 cm
200/bin 1750/tray



Pickwick 25/bag
Height 5" Size 8/9 cm
200/bin 1750/tray



Peter Pan 25/bag
Height 5" Size 8/9 cm
200/bin 1750/tray



Blue Moon Mix 25/bag
Height 5" Size 8/9 cm
200/bin 1750/tray



Large Flowering Mix 25/bag
Height 5" Size 8/9 cm
200/bin 1750/tray

MUSCARI



Mid Season

Bulb Size

varies

Retail Packages

20 bulbs per bag

Bin Display

250 bulbs per box

Bulk

1,250 or 1,750 bulbs per tray

Muscari, commonly known as Grape Hyacinths, are a versatile choice for landscaping and containers. Their striking blue flower clusters brighten any spring border and combine beautifully with medium-height, mid season tulips. The best option for larger displays is *Muscari armeniacum*, prized for its reliability and abundance. Our selection comprises the most popular and best performing varieties. Muscari are perennial and naturally unattractive to deer and rodents, making them a dependable addition to spring plantings.



White Pearl
Height 8"
20/bag

Size 7/8 cm
250/bin



Atlantic
Height 8"
20/bag

Size 9/10 cm
250/bin



Latifolium
Height 10"
20/bag

Size 6/+ cm
250/bin



Armeniacum
Height 8"
250/bin

20/bag
Size 9/10 cm
1250/tray



Muscari Mix
Height 8"
250/bin

20/bag
Size 8/9 cm
1750/tray



Valerie Finnis
Height 8"
20/bag

Size 8/9 cm
250/bin

ALLIUM



Late Spring

Bulb Size varies

Retail Packages

1, 5, or 25 bulbs per bag

Bin Display

20, 100 or 250 bulbs per box

Bulk

100 bulbs per tray

Alliums, or Ornamental Onions, are the latest spring bulbs to bloom and pair perfectly with perennials. Planted in well-drained soil, they naturalize beautifully while deterring deer and rodents with their distinctive scent. This diverse category comes in many shapes and sizes, with giant alliums making a spectacular show in landscape designs.

Important Note: We are not permitted to ship allium bulbs to Idaho or select counties in the state of Washington.



Cowanii
Height 16"
25/bag

Size 5/+ cm
250/bin



Azureum

Caeruleum
Height 20"
25/bag

Size 5/+ cm
250/bin



Drumsticks

Sphaerocephalon
Height 24"
25/bag

Size 5/+ cm
250/bin



Ping Pong (Ampeloprasum)
Height 40"
25/bag

Size 6/+ cm
250/bin



Atropurpureum
Height 24"
25/bag

Size 7/+ cm
250/bin



Purple Sensation 5/bag
 Height 36" Size 12/+ cm
 100/bin 500/tray



Red Mohican
 Height 40" Size 10/+ cm
 5/bag 100/bin



Schubertii
 Height 16" Size 12/+ cm
 5/bag 100/bin



Ambassador 1/bag
 Height 40" Size 20/+ cm
 20/bin 100/tray



Gladiator 1/bag
 Height 40" Size 20/+ cm
 20/bin 100/tray



Mount Everest 1/bag
 Height 40" Size 20/+ cm
 20/bin 100/tray



Pinball Wizard 1/bag
 Height 40" Size 20/+ cm
 20/bin 100/tray



Globemaster 1/bag
 Height 40" Size 20/+ cm
 20/bin 100/tray



Giant Mixture 1/bag
 Height 40" Size 20/+ cm
 20/bin 100/tray

SPECIALTIES



Early, Mid & Late Spring

Bulb Size
varies

Retail Packages
varies

Bin Display
20, 50 or 250 bulbs per box

Bulk
100 or 250 bulbs per tray



Mid Season

Fritillaria Imperialis Lutea Maxima 1/bag
Height 36" Size 20/+ cm
20/bin 100/tray



Mid Season

Fritillaria Persica 1/bag
Height 40" Size 20/+ cm
20/bin 100/tray



Mid Season

Fritillaria Persica Alba 1/bag
Height 38" Size 20/+ cm
20/bin 100/tray



Mid Season

Fritillaria Imperialis Rubra Maxima 1/bag
Height 36" Size 20/+ cm
20/bin 100/tray



Mid Season

Fritillaria Meleagris Mix
Height 8" Size 7/+ cm
20/bag 250/bin



Mid Season

Anemone Blanda Mixture
 Height 4" Size 5/+ cm
 15/bag 250/bin



Late Spring

Anemone Coronaria De Caen Mix
 Height 10" Size 8/+ cm
 15/bag 250/bin



Late Spring

Camassia Esculenta (Quamash)
 Height 26" Size 6/+ cm
 25/bag 250/bin



Late Spring

Camassia Leichtlinii Alba 5/bag
 Height 32" Size 14/16 cm
 250/tray 50/bin



Late Spring

Camassia Leichtlinii Caerulea 5/bag
 Height 32" Size 14/16 cm
 250/tray 50/bin



Late Spring

Hyacinthoides Hispanica Blue
Height 10" Size 8/10 cm
10/bag 250/bin



Late Spring

Hyacinthoides Hispanica White
Height 10" Size 8/10 cm
10/bag 250/bin



Early Spring

Chionodoxa Luciliae (Glory of the Snow)
Height 4" Size 5/+ cm
25/bag 250/bin



Late Spring

Hyacinthoides Hispanica Pink
Height 10" Size 8/10 cm
10/bag 250/bin



Late Spring

Hyacinthoides Hispanica Mix
Height 10" Size 8/10 cm
10/bag 250/bin



Early Spring

Eranthis Cilicica (Winter Aconite)
Height 3" Size 4/+ cm
25/bag 250/bin



Puschkinia Libanotica (scilloides)
Height 4" Size 5/+ cm
20/bag 250/bin



Iris Harmony
Height 6" Size 6/+ cm
20/bag 250/bin



Ipheion Jessie
Height 4" Size 4/+ cm
20/bag 250/bin



Leucojum Aestivum
Height 12" Size 8/10 cm
10/bag 250/bin



Scilla Siberica
Height 6" Size 8/+ cm
20/bag 250/bin



Scilla Siberica Alba
Height 6" Size 8/+ cm
20/bag 250/bin

SPECIALTIES



Bulk

Late Spring, Early & Late Summer

Bulb Size
varies

Retail Packages
varies

Bin Display
50, 100 or 500 bulbs per box

Only available in the USA!



Calla Aethiopica
Height 30"
100/bin

Size 14/16 cm
Early Summer



Amaryllis Belladonna Alba
Height 30"
100/bin

Size 16/18 cm
Late Spring



Amaryllis Belladonna
Height 30"
100/bin

Size 16/18 cm
Late Spring



Lycoris Aurea
Height 35"
100/bin

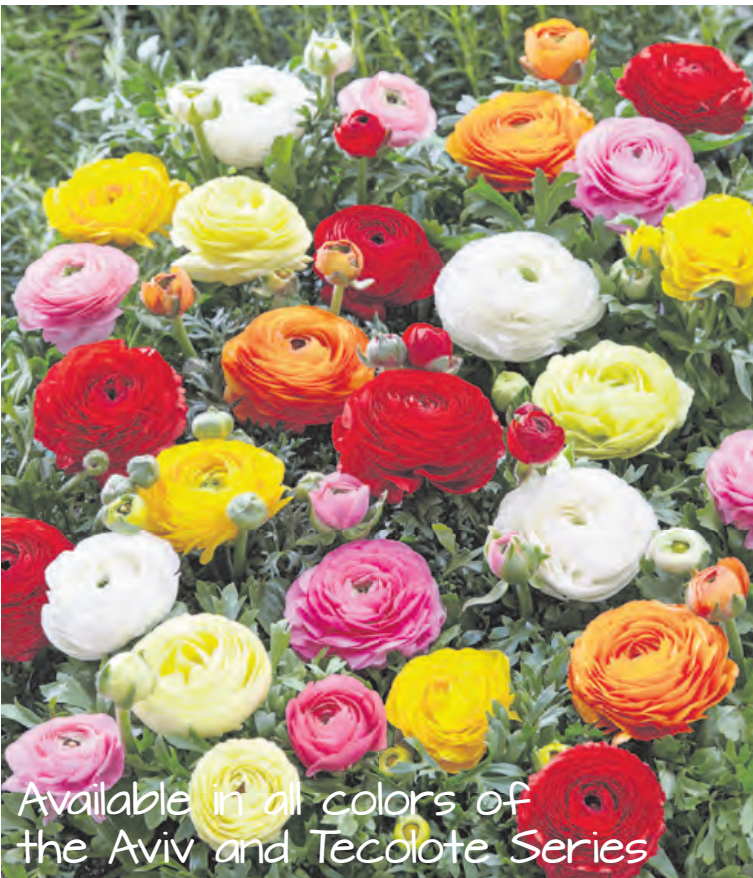
Size 12/14 cm
Late Summer



Lycoris Radiata
Height 24"
100/bin

Size 5/10 - 12cm
Late Summer

Pink and White
also available



Available in all colors of
the Aviv and Tecolote Series

Ranunculus
Height 16-20"

Size 7/+ cm

**Aviv
Tecolote**

500/bag
100/bag
Early Summer



Leucojum Gravetye Giant
Height 20"
100/bin

Size 12/13 cm
Late Spring



Scilla Peruviana
Height 14"
100/bin

Size 14/16 cm
Late Spring



Ornithogalum Arabicum
Height 18"
100/bin

Size 14/15cm
Late Spring

IRIS



Bearded
(Germanica)

Summer

Root Size

#1

Bin Display

15 rhizomes per box

Bulk

100 rhizomes per tray

Delivery

August – September

Bearded Iris are not true bulbs but rhizomes. The classic *Iris germanica* delivers vibrant, ruffled blooms and sturdy, upright foliage that enlivens any landscape. Unlike many spring bulbs, they do not require a cold period to flower, making them ideally suited for regions with mild winters. Easy to grow, drought-tolerant, and stunning as border plants, they thrive in well-drained soil.

Hardy in zones 3-10. It is recommended to plant no later than September. Deer and rodent resistant, USA grown. Color picture tags are included with each variety.

Only available in the USA!



August Treat

Height 20"

Mid



Clarence

Height 35"

Early



Frimousse

Height 33"

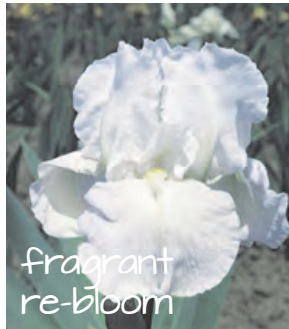
Mid to Late



Champagne and Strawberries

Height 38"

Mid



Immortality

Height 29"

Mid



All Night Long

Height 31"

Late



Discovered Treasure

Height 38"

Mid



Devil's Punchbowl

Height 35"

Early



Island Blush

Height 40"

Mid



Batik

Height 24"

Early



Cherry Blossom Song

Height 36"

Mid



Five O'Clock

Height 32"

Late



Better Together

Height 40"

Mid



Harvest of Memories

Height 38"

Mid



Lovely Senorita
Height 41" Mid to Late



Over Alaska
Height 36" Early to Mid



Open your Eyes
Height 15" Mid to Late



Mango Entree
Height 38" Mid to Late



Easter Charm
Height 30" Early to Mid



Dracula's Kiss
Height 36" Early to Mid



Nice Job
Height 32" Mid to Late



Pink Attraction
Height 30" Early to Mid



Orange Harvest
Height 32" Early to Mid



Rio Rojo
Height 37" Early to Mid



Rosalie Figge
Height 39" Mid



Presby's Crown Jewel
Height 36" Early to Mid



Petalpalooza
Height 34" Mid to Late



Victoria Falls
Height 40" Early to Late



Struck Twice
Height 37" Early to Late



Persian Berry
Height 35" Mid

Store Collection

Unit #600 Complete Store Collection

400 pre-packs on a re-usable wooden display rack with header card

Unit #699 Refill Store Collection

400 pre-packs
(rack and header card not included)

Unit #650 Refillable Rack + header card

Built to last, use it again every season and fill it up by picking from our extensive pre-pack assortment. Fits 40 pre-pack display boxes create your own assortment (pre-packs not included)

Please order before July 15th.

Contents unit #600 Complete Store Collection

Specialty bulbs

10 pre-packs each of:

Muscari Armeniacum	Allium Mount Everest
Muscari Mixture	Leucojum Aestivum
Hyacinthoides Mixture	Daffodil Thalia
Scilla Siberica	Daffodil Tête à Tête
Allium Gladiator	Crocus Large Flowering Mix
Allium Purple Sensation	Crocus Flower Record

Hyacinths

10 pre-packs each of:

White Pearl	Pink Pearl
Blue Star	Miss Saigon

Tulips

10 pre-packs each of:

Red Emperor	Strong Gold
Orange Emperor	Flaming Flag
Golden Emperor	Sunrise Dynasty
Hakuun	Strong Love
Banja Luka	Yellow Pomponette
Novi Sun	Double Gudoshnik
Red Impression	Foxtrot
Pink Impression	Double Negrita

Daffodils

10 pre-packs each of:

Dutch Master	Red Devon
Mount Hood	Ice Follies
Goblet	Tahiti
Accent	Replete



Collection #600

Easy to order, easy to sell!

Let us take the guesswork out of fall bulb planning. This collection includes 40 of our best selling varieties.

Sustainable

Our new custom wooden display is sturdy, easy to move and sustainable, as it can be re-used many times.

Rack size: 48 x 16 x 75 inches

A large full color header card is included.

Please order before July 15th.

XL-BULBS



Our vintage Dutch wooden crates are filled to the brim with the most popular XL bulbs we harvest. Only select varieties produce XL bulbs, and these premium selections are all grown on our family farms in Holland. The exceptional size and quality of these bulbs will set your offering apart from big-box competition. Each crate features a hinged lid that flips up to display a large, full-color poster, creating an eye-catching retail presentation. Free paper bags are included for customer convenience.

#324
Daydream



#334
Goblet

Extra Large Daffodils



#337 Dutch Master
Bulb Size 14/16 cm
200 bulbs/crate

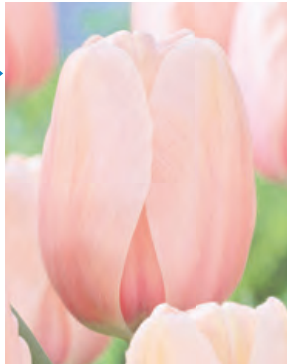


#335 Mount Hood
Bulb Size 14/16 cm
200 bulbs/crate

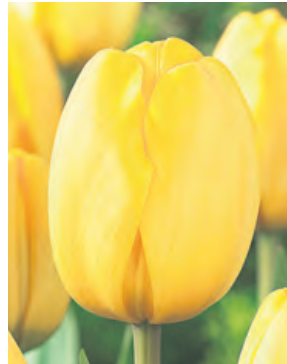


#334 Goblet
Bulb Size 14/16 cm
200 bulbs/crate

Extra Large Tulips



#322 Salmon Impression
Bulb Size 14/+ cm
300 bulbs/crate



#325 Golden Parade
Bulb Size 14/+ cm
300 bulbs/crate



#324 Daydream
Bulb Size 14/+ cm
300 bulbs/crate



#327 Purple Lady
Bulb Size 14/+ cm
300 bulbs/crate



#326 Red Impression
Bulb Size 14/+ cm
300 bulbs/crate



#320 Hakuun
Bulb Size 14/+ cm
300 bulbs/crate



#321 Pink Impression
Bulb Size 14/+ cm
300 bulbs/crate

Extra Large Alliums



#350 Ambassador
Bulb Size 28/+ cm
50 bulbs/crate

VALUE PACKS



Top-size bulbs, with more bulbs per package, at competitive price points.

Our Value-Pack program is designed to deliver exceptional size and quality that big-box competition cannot match, while maintaining affordability. These packs feature only our best-selling tulip varieties and mixtures, making them ideal for homeowners and landscape professionals alike.



Salmon Van Eijk

Tulip Single Colors



#118 Novi Sun
Bulb Size 12/+ cm
25 bulbs / 16 packages



#119 Banja Luka
Bulb Size 12/+ cm
25 bulbs / 16 packages



#121 Van Eijk
Bulb Size 12/+ cm
25 bulbs / 16 packages



#122 Salmon Van Eijk
Bulb Size 12/+ cm
25 bulbs / 16 packages



#123 Lady Van Eijk
Bulb Size 12/+ cm
25 bulbs / 16 packages



#125 Red Van Eijk
Bulb Size 12/+ cm
25 bulbs / 16 packages



#127 Negrita
Bulb Size 12/+ cm
25 bulbs / 16 packages

Tulip Mixtures



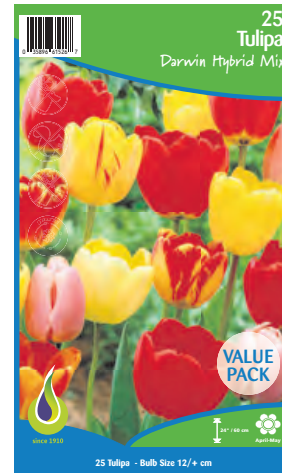
#110 Romantic Mix
Bulb Size 12/+ cm
25 bulbs / 16 packages



#111 Spring Joy Mix
Bulb Size 12/+ cm
25 bulbs / 16 packages



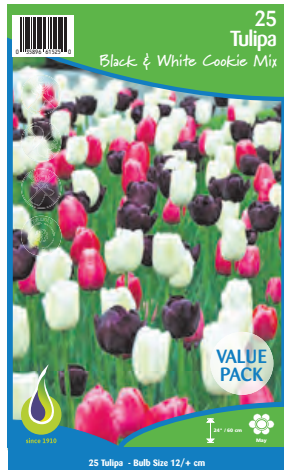
#112 Holiday Mix
Bulb Size 12/+ cm
25 bulbs / 16 packages



#113 Darwin Hybrid Mix
Bulb Size 12/+ cm
25 bulbs / 16 packages



#114 Fire Glow Mix
Bulb Size 12/+ cm
25 bulbs / 16 packages



#116 Black & White Cookie Mix
Bulb Size 12/+ cm
25 bulbs / 16 packages



#117 Mondriaan Mix
Bulb Size 12/+ cm
25 bulbs / 16 packages



#115 Flag Mix
Bulb Size 12/+ cm
25 bulbs / 16 packages



#120 Impression Mix
Bulb Size 12/+ cm
25 bulbs / 16 packages



#124 Dynasty Mix
Bulb Size 12/+ cm
25 bulbs / 16 packages



Daffodils



#141 Dutch Master
Bulb Size 12/14 cm
25 bulbs / 12 packages



#142 Ice Follies
Bulb Size 12/14 cm
25 bulbs / 12 packages



#143 Large Flowering Mix
Bulb Size 12/14 cm
25 bulbs / 12 packages



#145 Replete
Bulb Size 12/14 cm
25 bulbs / 12 packages

Crocus



#160 Crocus Large Flowering Mix
Bulb Size 8/9 cm
50 bulbs / 30 packages

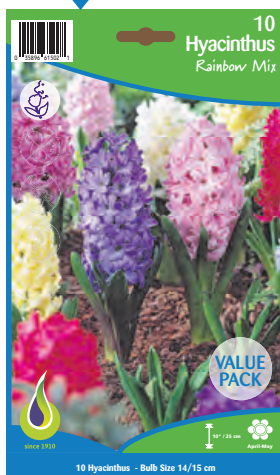
Hyacinth Mixtures



#150 Tête à Tête
Bulb Size 12/14 cm
25 bulbs / 12 packages



#155 Botanical Mix
Bulb Size 12/14 cm
25 bulbs / 12 packages



#100 Rainbow Mix
Bulb Size 14/15 cm
10 bulbs / 16 packages



#101 The Blues Mix
Bulb Size 14/15 cm
10 bulbs / 16 packages



#102 The Pinks Mix
Bulb Size 14/15 cm
10 bulbs / 16 packages

JUMBO LANDSCAPE BAGS



Popular with both homeowners and landscape professionals, each jumbo netlon bag contains no fewer than 50 bulbs. A large, colorful label is included with every bag and can be used as a planting tag.

The solid, reusable wooden pallet display holds 90 jumbo bags, creating a strong retail presence. These competitively priced jumbo bags can also be ordered in convenient refill multiples of 8.



Colorful label that can be used as a planting tag!

700 Wooden pallet display



Color your spring
Fall is for planting bulbs



Container Refills



Container Refills

#701 8 Jumbo Bags

Daffodils Dutch Master

50/bag 12/14 cm

#702 8 Jumbo Bags

Daffodils Mixed Colors

50/bag 12/14 cm

#703 8 Jumbo Bags

Tulips Van Eijk Mix

50/bag 12/+ cm

Bulb size 12/14 cm

Early to Mid Season

Contents 90 bags:

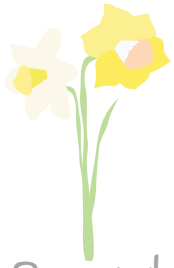
30 Jumbo Bags Daffodils Dutch Master 50/bag

30 Jumbo Bags Daffodils Mixed Colors 50/bag

30 Jumbo Bags Tulips Van Eijk Mix 50/bag



DAFFODILS



Bulk Paperwhites

Grown exclusively in Israel, Tazetta daffodils—commonly known as Paperwhites—are the tallest of the Narcissi, reaching heights of up to 30". Each stem produces umbels with as many as 8 flowers. Highly fragrant and primarily suited for indoor planting, they can also be grown outdoors in zones 8–11.

Paperwhites are easy and quick to force at home: simply place bulbs on pebble stones and water just below the base. Blooms appear in 4–6 weeks. Due to their height and heavy flower clusters, Paperwhites may topple over; keep them upright with stakes or twine.

Most fragrant & popular: *Ziva*
Least fragrant: *Inbal*

Only available in the USA.



Nir

Bulb Size:	bulbs/tray
14/15 cm	500
15/16 cm	400
16/17 cm	350
17/+ cm	300
18/19 cm	250

Use: all purpose



Ziva

Bulb Size:	bulbs/tray	bulbs/bin	bulb/bag
14/15 cm	500		
15/16 cm	400	50	5
16/17 cm	350		
17/+ cm	300		

Use: all purpose



Double

Erlicheer

Bulb Size:	bulbs/tray
17/+ cm	300

Use: all purpose



Wintersun

Bulb Size:	bulbs/tray
17/+ cm	300

Use: all purpose



Inbal

Bulb Size:	bulbs/tray
14/15 cm	500
15/16 cm	400
16/17 cm	350
17/+ cm	300

Use: late pot



Chinese Sacred Lily

Bulb Size:	bulbs/tray
17/+ cm	300



Grand Soleil d'Or

Bulb Size:	bulbs/tray
17/+ cm	300



AMARYLLIS

Indoors Winter



Dutch

Bulb Size

36/38, 34/36 or 30/32 cm

Display box

10 bulbs per box

Our jumbo-size amaryllis bulbs are the perfect gift for the holiday season. Easy to grow indoors, they produce stunning blooms approximately 12 weeks after planting. We supply only the largest bulbs available from Holland, each capable of producing 2–3 stems per bulb, with about 4 blooms per stem.

Choose your own assortment from our wide range of colors and varieties. Every bulb is individually labeled with a color tag and packed in a display box with a colorful poster for strong retail appeal.

Amaryllis bulbs can also be planted outdoors in zones 9–10. They require plenty of sunlight, well-drained soil, and bottom heat to initiate growth.



Apple Blossom
Size 36/38 cm

10/box



Christmas Gift
Size 36/38 cm

10/box



Delivery starts October 1st



Gervase
Size 34/36 cm

10/box



Pink Surprise
Size 36/38 cm

10/box



Sweet Cream
Size 34/36 cm

10/box

NEW



Elvas
Size 34/36 cm

10/box



Carmen
Size 36/38 cm

10/box



Magic Green
Size 36/38 cm

10/box



Minerva
Size 36/38 cm

10/box



Red Lion
Size 36/38 cm

10/box



NEW

Stargazer
Size 36/38 cm

10/box



Magical Touch
Size 36/38 cm

10/box



Double King
Size 34/36 cm

10/box



Stardust
Size 36/38 cm

10/box



Emerald
Size 30/32 cm

10/box



Clown
Size 36/38 cm

10/box



Exotic Star
Size 30/32 cm

10/box



King Star
Size 36/38 cm

10/box



Provence
Size 36/38 cm

10/box



Strong King
Size 36/38 cm

10/box



Naranja
Size 36/38 cm

10/box



Terra Cotta Star
Size 34/36 cm

10/box



Marilyn
Size 34/36 cm 10/box



Lady Jane
Size 34/36 cm 10/box



Dancing Queen
Size 34/36 cm 10/box



Aquaro
Size 34/36 cm 10/box



Double Dream
Size 34/36 cm 10/box

AMARYLLIS



Peru

Forcing time:
4-6 weeks to ready-to-sell-stage

Growing temperature:
between 64-72°F day and night

Light intensity:
medium - high

Bulb Size
28/30 cm, 36/38 cm

Bulk
25 bulbs per tray,
16 bulbs per tray

Amaryllis tags included

We import these bulbs directly from the best Peruvian grower for their impeccable quality as well as the reliable bloom times. Only Southern Hemisphere Amaryllis guarantee Christmas blooms. Shipping begins late September to ensure that our customers have ready-to-sell pots throughout the holiday season. No fertilizer is needed during the forcing period. Relative humidity should be 65-70%. Cold storage for the finished product (cracking buds) at 45°F, no longer than 2 weeks.

Only available in the USA!

Please note that these bulbs are suitable for greenhouse production only and will sprout aggressively when used for retail.



Bolero 50-55 forcing days
Size 28/30 cm 25/tray
Size 36/38 cm 16/tray



Amadeus 40-45 forcing days
Size 28/30 cm 25/tray
Size 36/38 cm 16/tray



Double King 40-45 forcing days
Size 28/30 cm 25/tray
Size 36/38 cm 16/tray



Lemon Star 40-45 forcing days
Size 28/30 cm 25/tray
Size 36/38 cm 16/tray



White Symphony 45-50 forcing days
Size 28/30 cm 25/tray
Size 36/38 cm 16/tray



Cherry Blossom 50-55 forcing days
Size 28/30 cm 25/tray
Size 36/38 cm 16/tray



Minerva 50-55 forcing days
Size 28/30 cm 25/tray
Size 36/38 cm 16/tray



Andes Fire 45-50 forcing days
Size 28/30 cm 25/tray
Size 36/38 cm 16/tray



Picasso 35-40 forcing days
Size 28/30 cm 25/tray



Red Victory 45-50 forcing days
Size 28/30 cm 25/tray
Size 36/38 cm 16/tray



Revelation 50-55 forcing days
Size 28/30 cm 25/tray
Size 36/38 cm 16/tray



Toronto 35-40 forcing days
Size 28/30 cm 25/tray
Size 36/38 cm 16/tray



White Candle 45-50 forcing days
Size 28/30 cm 25/tray
Size 36/38 cm 16/tray



Tika Star 35-40 forcing days
Size 28/30 cm 25/tray



Tika Coral 45-50 forcing days
Size 28/30 cm 25/tray



Sovereign 45-50 forcing days
Size 28/30 cm 25/tray
Size 36/38 cm 16/tray



Tika Sunrise 45-50 forcing days
Size 28/30 cm 25/tray
Size 36/38 cm 16/tray



Tika Disco 35-40 forcing days
Size 28/30 cm 25/tray
Size 36/38 cm 16/tray

AMARYLLIS



Counter Collection

Vintage wooden crate filled with 18 top size amaryllis bulbs in 8 different varieties. Each bulb has a full color elastic tag. The collection comes with a large poster on the lid of the case.

Bulb Size: 36/+ cm

Collection #399 includes:

- | | |
|-----------------------|------------------------|
| 2 bulbs Apple Blossom | 2 bulbs Pink Surprise |
| 2 bulbs Carmen | 2 bulbs Stardust |
| 2 bulbs King Star | 3 bulbs Christmas Gift |
| 2 bulbs Minerva | 3 bulbs Red Lion |



Collection #399

Delivery starts
October 1st!

HOLIDAY GIFTS



Amaryllis

Luxury Amaryllis Kits

Pre-potted bulbs - a gift ready to grow!

Bulb size 26/28 cm

The beautiful glossy box with a pre-potted bulb makes a perfect gift for the holiday season!

Delivery starts October 1st

Amaryllis Kit

Collection	Contents:
#210	12 Amaryllis Red
#211	12 Amaryllis White
#212	12 Amaryllis Striped
#213	12 Amaryllis Dark Red
#214	12 Amaryllis Light Pink
#215	12 Amaryllis Dark Pink
#216	12 Amaryllis: 2 each of red, white, striped, dark red, light pink and dark pink
#217	12 Amaryllis: 6 red, 3 white, 3 striped
#218	12 Amaryllis: 6 dark red, 3 light pink, 3 dark pink



AMARYLLIS



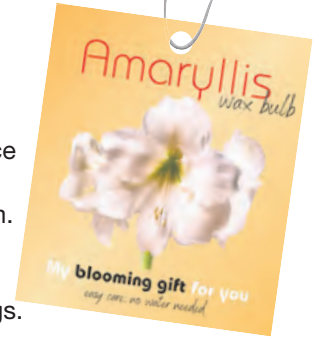
Wax Bulbs

Easy care,
no water needed!

Bulb Size
32/34 cm
Display box
10 bulbs per box

Waxed amaryllis are completely self-sustaining and require no water or soil to bloom. Each bulb is waxed by hand at our farms in the Netherlands, using only premium Dutch bulbs that are resistant to early sprouting.

The large 32/34 cm bulbs produce 2-3 stems per bulb, with approximately 4 blooms per stem. Every bulb is individually packed in a display case and includes color tags and metal support rings.



A beautiful item for retail, e-commerce, or client gifts, waxed amaryllis offer easy care with no water needed.

Availability: U.S.A. only

Classic Collection



Classic Red RED FLOWERS
Size 32/34 cm 10/box



Classic Green RED FLOWERS
Size 32/34 cm 10/box



Classic White WHITE FLOWERS
Size 32/34 cm 10/box

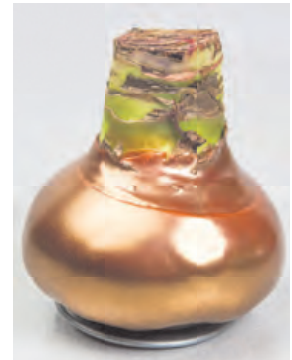
Shiny Collection



Shiny Silver WHITE FLOWERS
Size 32/34 cm 10/box



Shiny Gold WHITE FLOWERS
Size 32/34 cm 10/box



Shiny Copper RED FLOWERS
Size 32/34 cm 10/box



Shiny Red RED FLOWERS
Size 32/34 cm 10/box



Shiny Green RED FLOWERS
Size 32/34 cm 10/box



Order your bulbs at:

Vandenberg Bulb Inc.
P.O. Box 468
Howell MI 48844

Tel (toll free):

1-800-955-3813
1-517-546-3813
Fax: 1-517-546-3429

orders@vandenberghort.com
www.vandenberghort.com

**Vandenberg
Hort**

Wholesale Bulbs • Perennials • Plants • Soils • Supplies

Suppliers of spring!

For more than 115 years, we have cultivated spring-flowering bulbs—tulips, hyacinths, daffodils, crocus, and more—in the heart of the Dutch bulb district. Bulbs are not only our livelihood; they are our family's enduring passion. Explore the industry's largest assortment of fall-shipping bulbs and purchase directly from the grower.

